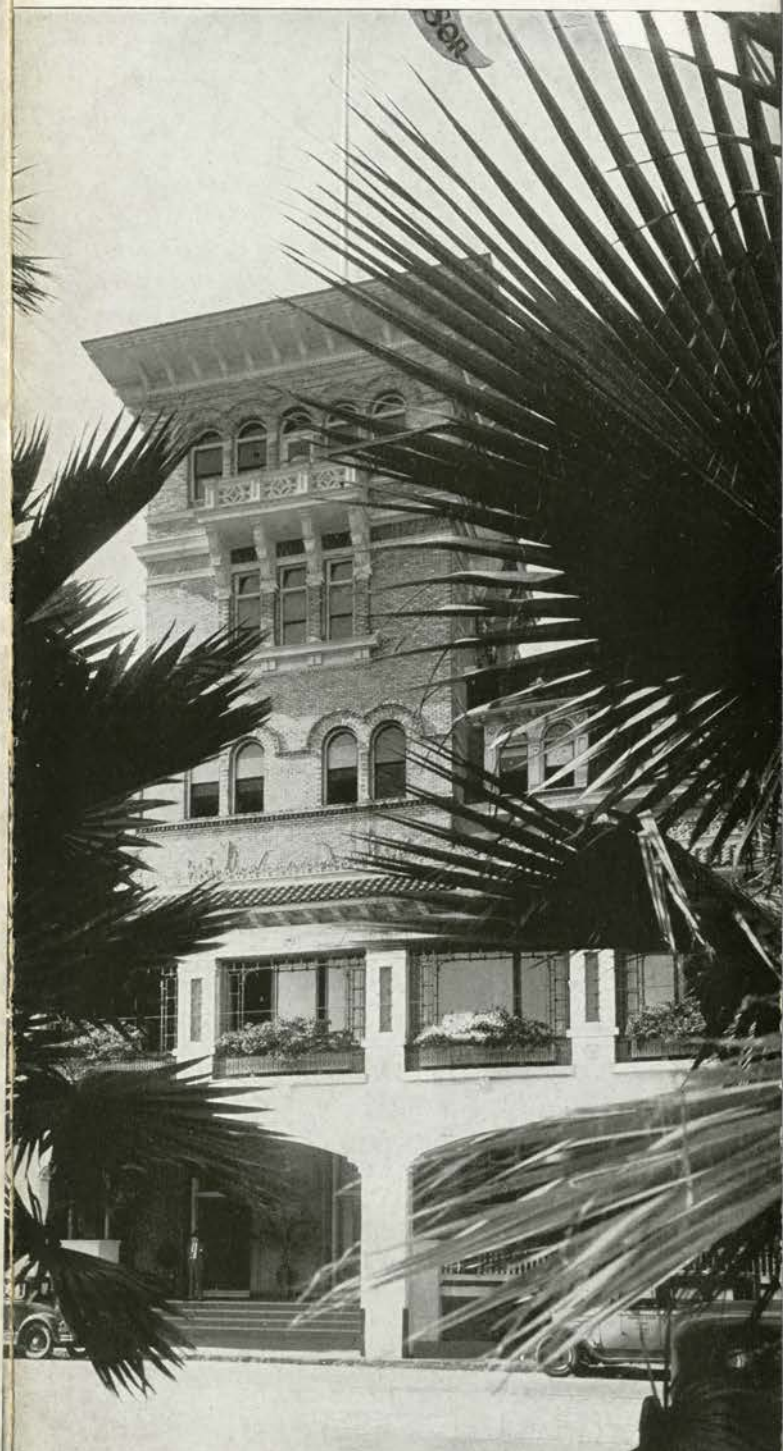


*Jacksonville - Florida*



HOTEL WINDSOR



ONE of Jacksonville's most enjoyable playgrounds is "the Beach" -- just eighteen miles East, reached by a double concrete highway. At low tide there is a thirty mile stretch of hard packed sand, five hundred feet wide over which automobiles may speed in safety.



Below---a picture of our own garage on the hotel grounds, with direct connection to the Windsor Lobby. A great convenience for those who motor.





WINDSOR SERVICE  
LIVES UP TO THE  
PROMISES MADE  
BY THESE FIRST  
IMPRESSIONS

*A Robert Meyer Hotel*

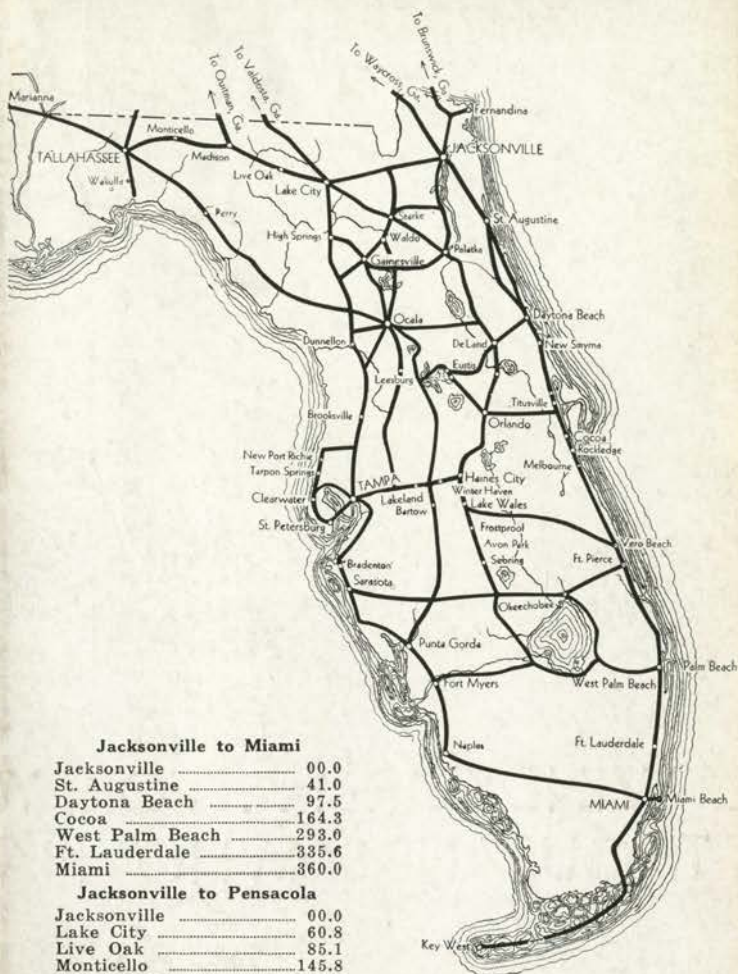
JERRY R. CALDWELL - - Manager

## JACKSONVILLE'S HOTEL WINDSOR ... FOR YEARS THE SYMBOL OF HOTEL PERFECTION TO THOUSANDS WHO HAVE BEEN OUR GUESTS

OUR guests---especially those Winter Visitors to Florida to whom perfection in accommodations and service is but their everyday requirement---find the Windsor at all times measuring up to their standards of living.

Dignity without ostentation in the Lobby; Comfort and Convenience in the Guest Rooms; Splendid food and quiet, capable service in the two distinctly different dining rooms--these are just a few of the things that make a stay at the Windsor most enjoyable. ¶The Windsor is delightfully located in the very heart of Jacksonville facing Hemming Park. ¶The Windsor Lobby and Public Rooms are "just different." Large, airy and luxuriously furnished, these rooms impress one with a feeling of "Hominess." Our broad verandas are an added attraction.





**Jacksonville to Miami**

Jacksonville .....	00.0
St. Augustine .....	41.0
Daytona Beach .....	97.5
Cocoa .....	164.3
West Palm Beach .....	293.0
Ft. Lauderdale .....	335.6
Miami .....	360.0

**Jacksonville to Pensacola**

Jacksonville .....	00.0
Lake City .....	60.8
Live Oak .....	85.1
Monticello .....	145.8
Tallahassee .....	172.5
Quincy .....	198.5
Marianna .....	243.0
DeFuniak Springs .....	302.0
Pensacola .....	383.6

**Jacksonville to Tampa  
Via Ocala or Gainesville**

Jacksonville .....	00.0
Waldo .....	58.2
Gainesville .....	74.9
Ocala .....	112.0
Ocala (Via Hawthorn) .....	106.0
Dunnellon .....	126.2
Brooksville .....	166.0
Tampa .....	211.1

**Jacksonville to Fernandina**

Jacksonville .....	00.0
Fernandina .....	34.8

**Jacksonville to Tampa and  
Lake Wales Via Orlando**

Jacksonville .....	00.0
Green Cove Springs .....	33.0
DeLand .....	116.8
Orlando .....	157.9
Haines City .....	198.5
Lake Wales .....	215.0
Lakeland .....	223.0
Tampa .....	257.0

All distances given are approximate.

**THE ROBERT MEYER HOTELS**

ROBERT R. MEYER, President

Hotel Windsor .....	Jacksonville, Fla.
Hotel Winecoff .....	Atlanta, Ga.
Hotel Farragut .....	Knoxville, Tenn.
Hotel Hermitage .....	Nashville, Tenn.
Hotel Patrick Henry .....	Roanoke, Va.
Hotel Stacy Trent .....	Trenton, N. J.
Hotel Sir Walter .....	Raleigh, N. C.
Hotel Emerson .....	Baltimore, Md.
Hotel Roosevelt .....	Jacksonville, Fla.