

---

UNIVERSITY OF NORTH FLORIDA

# NATURE PRESERVE



ROBERT W. LOFTIN NATURE TRAILS

A NATIONAL RECREATIONAL TRAIL IN THE NATIONAL TRAILS SYSTEM



## ROBERT W. LOFTIN NATURE TRAILS

Named in honor of a prominent University of North Florida faculty member, the **Robert W. Loftin Nature Trails** consist of three trails, open daily, sunrise to sunset. In 1978 the U. S. Department of the Interior included UNF's nature trails in the National Recreation Trails Registry.

---

**LOCATION:** All trailheads are adjacent to the Nature Preserve parking area, which is the first parking lot a visitor will see after entering the campus. Consult the large sign in the parking lot for directions to the trailheads, Lake Oneida and the picnic area.

---

### RED MAPLE BOARDWALK:

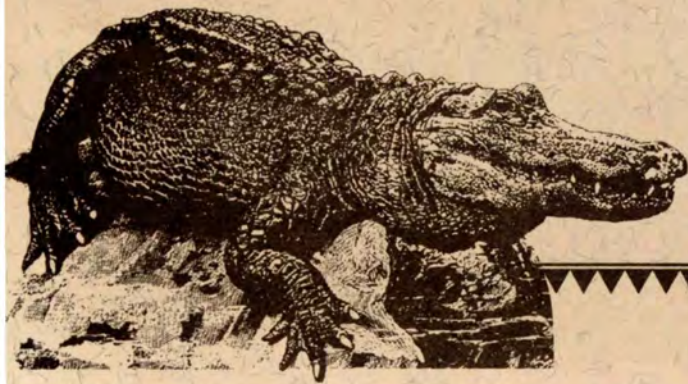
- Color-coded bright red
  - 1600 feet long
  - Wheelchair accessible ♿
  - Natural history interpretive signs mounted on rails along boardwalk
- HABITATS:** moist woodland, freshwater lake, cypress swamp
- 

### BLUEBERRY TRAIL:

- Color-coded dark blue
  - 1.5 miles long (walking time-1.5 hours)
  - Natural history interpretive signs mounted on posts
- HABITATS:** Moist woodland, pine forest, freshwater creek and lake
- 

### GOLDENROD TRAIL:

- Color-coded bright yellow
  - 2.5 miles long (walking time-2.5 hours)
  - Natural history interpretive signs mounted on posts
  - Segments of this trail overlap Blueberry Trail
- HABITATS:** highlights include hardwood bottomland, long-leaf pine sandhill and cypress swamp





## A MESSAGE TO VISITORS:

Even after 20 years of growth, UNF continues to protect 800 acres of wild Florida. Hundreds of species of plants and animals live within the preserve. The people who come to this place must remember that they are visitors, and that maintaining the integrity of the plants and animals is of the highest priority.

---

### **Please leave at home:**

your dogs, horses, bicycles, off-road vehicles and weapons.

### **Please bring:**

your binoculars, cameras, sketch pads and respect for the natural world.

Together we can preserve this place for future generations of plants, animals and people.

---



## FISHING

Visitors may fish Lake Oneida during daylight hours. A Florida freshwater fishing license is required: all state rules apply. No live shiners may be used as bait. You may launch a canoe or jon-boat on the lake. Electric motors are acceptable. Be safe! Watch the weather and bring life vests.

---



## ENJOY YOUR VISIT AND COME AGAIN

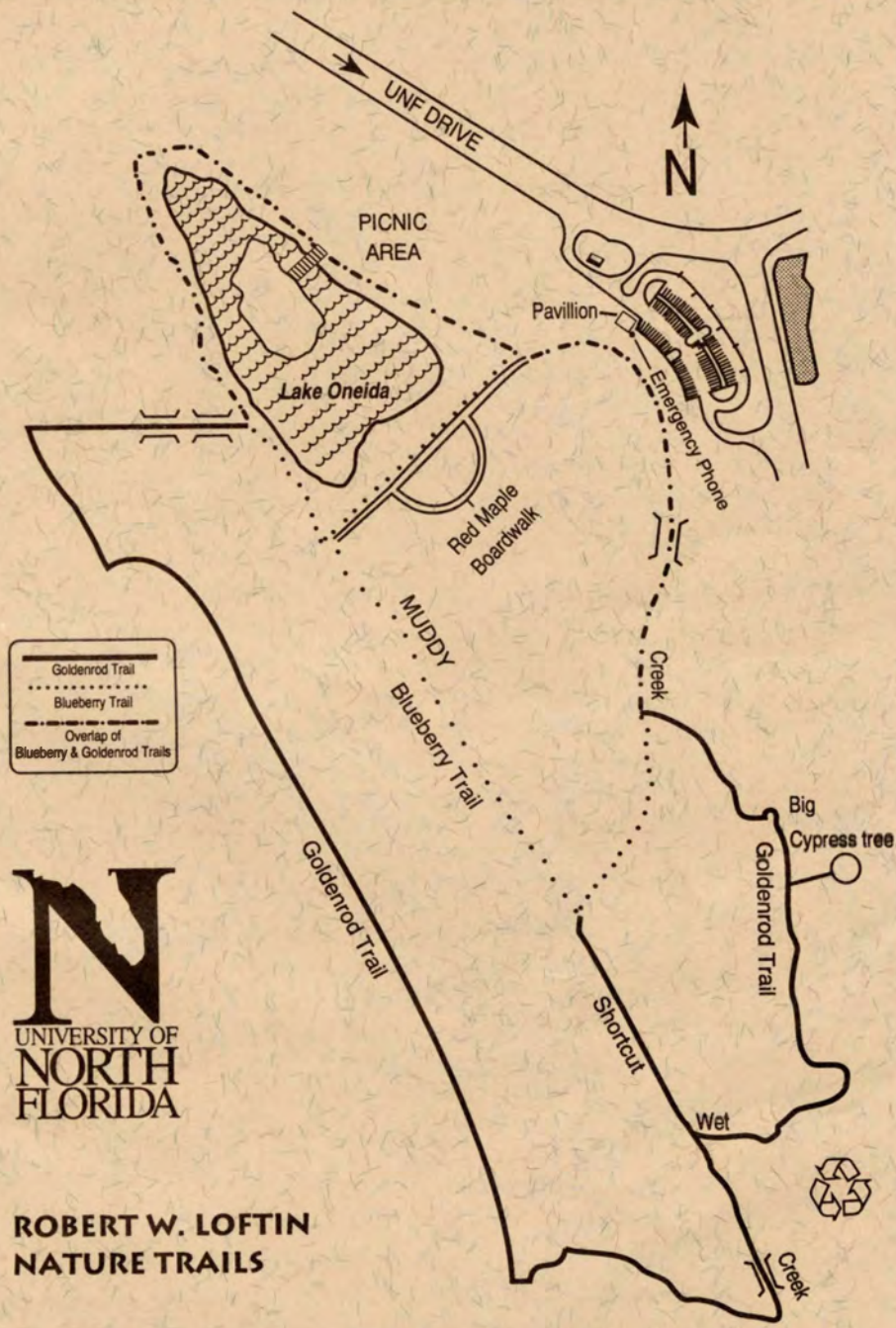
The Nature Preserve is managed by the  
**UNIVERSITY OF NORTH FLORIDA**

Department of Recreation  
Division of Student Affairs  
4567 St. Johns Bluff Road South  
Jacksonville, FL 32224-2645

*Visitor donations support the  
operation of this nature preserve.*

For more information:  
Call (904) 646-2998





	Goldenrod Trail
	Blueberry Trail
	Overlap of Blueberry & Goldenrod Trails

**N**  
UNIVERSITY OF  
NORTH  
FLORIDA

**ROBERT W. LOFTIN  
NATURE TRAILS**

