



Sawmill Slough Preserve at the University of North Florida

Presented by James Taylor



**No one like you.
No place like this.**



University of North Florida

- Established in 1972
- Located in Jacksonville, Fl.
- Situated on approximately 1400 acres
- Student population of about 16,500

UNF Environmental Center

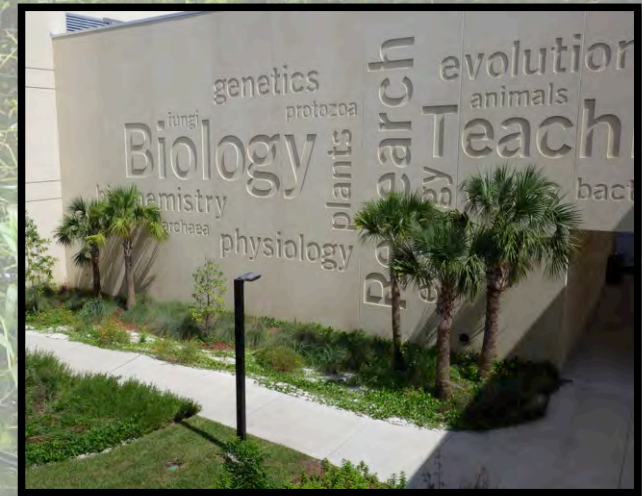
- Created in 2004
- Support cross-disciplinary education and research related to the environment
- Coordinate and promote campus sustainability
- Works closely with Physical Facilities and Sustainability Committee



University of North Florida



UNF Biological Sciences Building

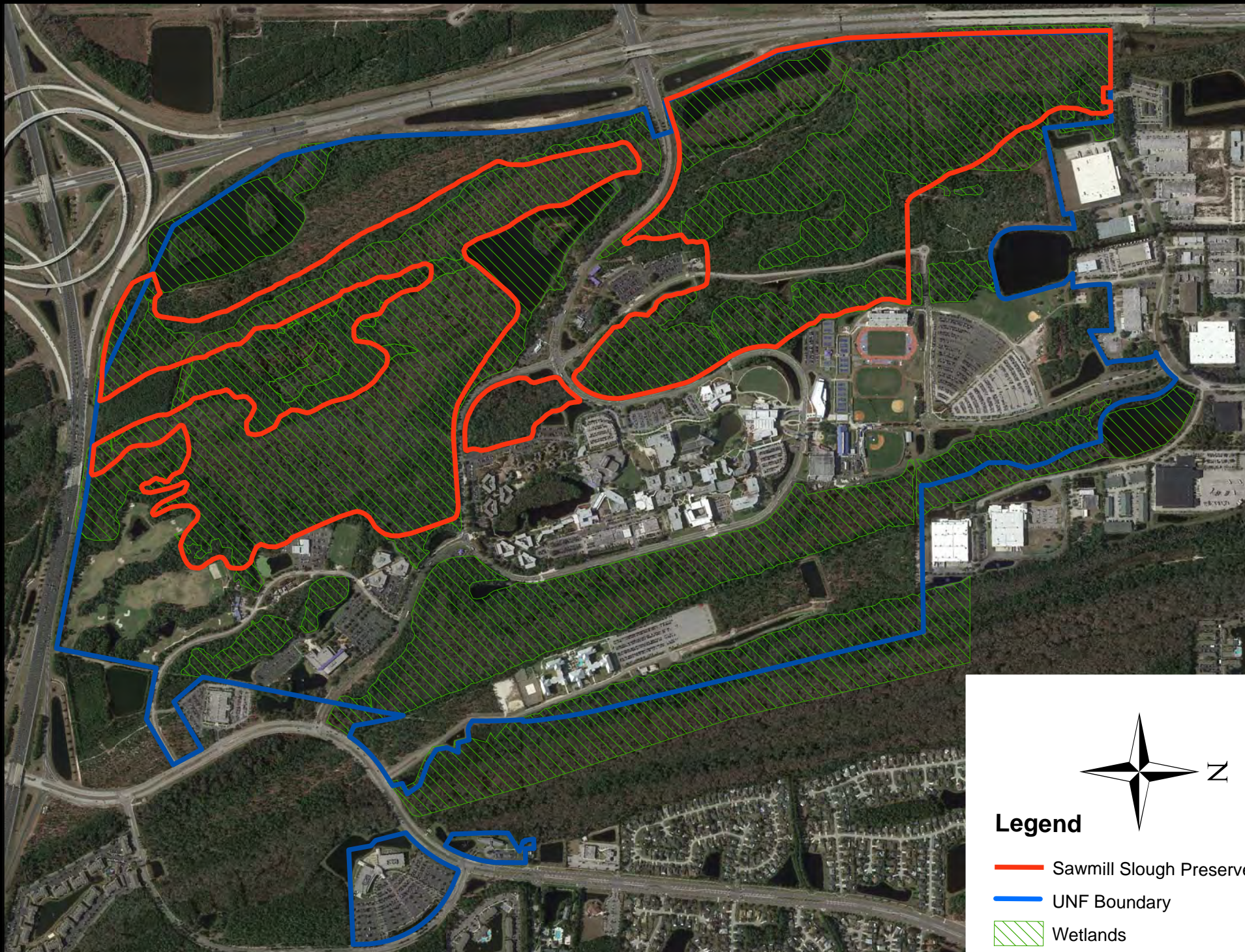


Sawmill Slough Preserve






- 382 acres of preserve
- Rich biodiversity
- Diverse habitats
 - Basin swamp
 - Slough marsh
 - Wet flatwoods
 - Mesic flatwoods
 - Sandhill
 - Seepage stream
- Curator: Chuck Hubbuch, Assistant Director, UNF Physical Facilities



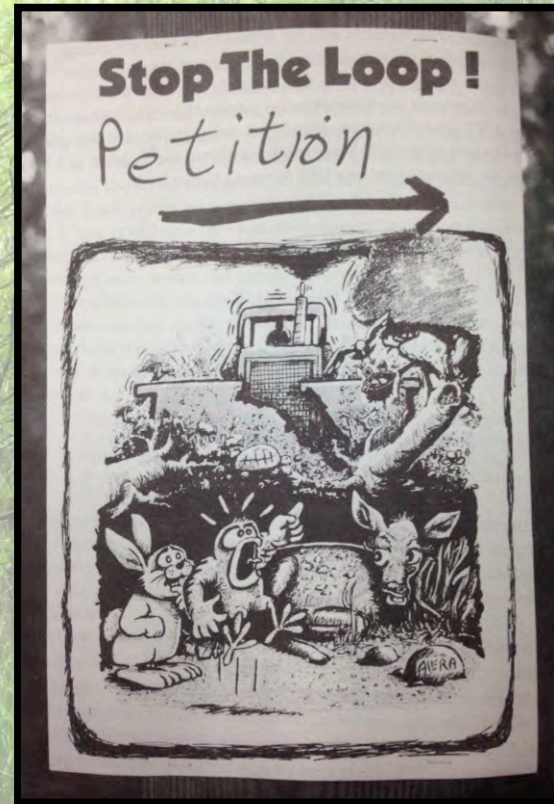


Legend

-  Sawmill Slough Preserve
-  UNF Boundary
-  Wetlands

History of the Sawmill Slough Preserve

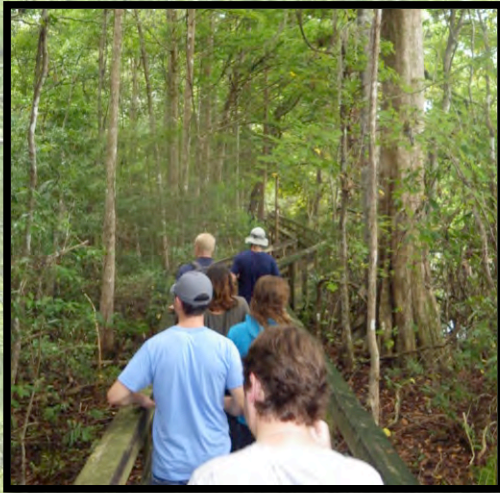
- Before UNF development, land used for timber and turpentine collection
- Sawmill Slough Conservation Club and professor Robert W. Lofton were instrumental in establishing nature trails
- Plans for road development lead to the preserve designation
- Established as a preserve in 2006 by UNF President John Delaney



Eco-Adventures: Recreation and Environmental Education



UNF Research and Coursework



Research

- **Joseph Butler, Ph.D.**
 - Gopher tortoise monitoring
- **Anthony Rossi, Ph.D.**
 - Hooded pitcher plant, turkey oak, bay trees
- **Daniel Moon, Ph.D.**
 - Hooded pitcher plant
- **Kelly Smith, Ph.D.**
 - Water quality monitoring, fish sampling
- **Kerry Clark, Ph.D.**
 - Ticks and Lyme disease

Coursework

- **Fine arts**
 - Students use preserve as a studio
 - Inspiration for photography
- **Biology**
 - Students collect water and soil samples
 - Gain field experience
- **Other courses**
 - Use campus as outdoor classroom

Campus Natural Assets Inventory (CNAI)



History

- Began as a personal project of the curator's in 2006
- Funding to expand the project was provided by multiple grants through the Cummer Family Foundation
- Initial focus was on plant species; currently expanding species lists of animals and invertebrates on UNF campus

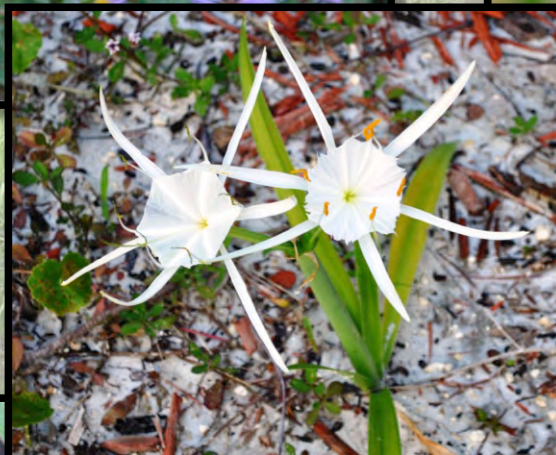
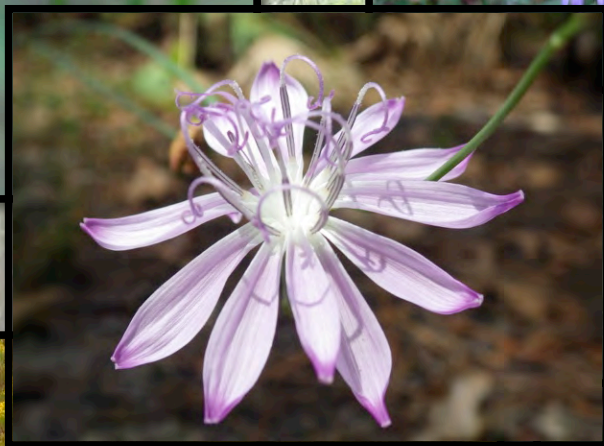
Goals

- Optimize the value of the preserve by developing a comprehensive species list
- Focus on creating more accessible educational materials related to nature
- Over 550 plant species were added to the campus inventory
 - 36+ plant species were vouchered for Duval County

Plants



Plants



Birds



Cathy



Cathy 5



Cathy Murphy



Cathy Murphy

Insects



Reptiles and Amphibians



Mammals



Future Plans

- Continuing maintenance and prescribed burn plan
- Expanding boundaries
- Enhancing signage
- Renovating boardwalks
- Promoting student involvement in research
- Branding the Sawmill Slough Preserve name



Acknowledgements

- Funding provided by the Cummer Family Foundation
- Inventory:
 - UNF Environmental Center
 - Justin Lemmons
 - Jason McGregor
 - Will Seemer
 - UNF Physical Facilities
 - Chuck Hubbuch
- UNF Department of Biology
- Photos provided by
 - Justin Lemmons,
 - Chuck Hubbuch,
 - Cathy Murphy
 - Jake FitzRoy, Eco-Adventures



UNF

Environmental Center

Resources

[UNF Environmental Center](http://www.unf.edu/ecenter/)

<http://www.unf.edu/ecenter/>

[Sawmill Slough Preserve](http://www.unf.edu/physicalfacilities/Sawmill_Slough_Preserve.aspx)

http://www.unf.edu/physicalfacilities/Sawmill_Slough_Preserve.aspx

[Campus Natural Assets Inventory](http://www.unf.edu/ecenter/Campus_Natural_Assets_Inventory.aspx)

[http://www.unf.edu/ecenter/Campus Natural Assets Inventory.aspx](http://www.unf.edu/ecenter/Campus_Natural_Assets_Inventory.aspx)

[Eco-Adventures](https://www.unf.edu/recreation/ecoadventure/)

<https://www.unf.edu/recreation/ecoadventure/>

[Designation of Sawmill Slough Preserve](#)

[Atlas of Florida Vascular Plants](#)

[Robert W. Loftin Nature Trail Map](#)



UNF

Environmental Center

Contacts

James Taylor
Coordinator, UNF Environmental Center
j.taylor@unf.edu

Chuck Hubbuch
Curator, UNF Sawmill Slough Preserve
Assistant Director, UNF Physical Facilities, Landscape,
and Grounds
chubbuch@unf.edu

Justin Lemmons
Ecologist, UNF Environmental Center
j.lemmons@unf.edu

Amy Costa
Assistant Director, UNF Eco Adventure
a.costa@unf.edu



UNF

Environmental Center