

12-12-1969

Booklet: Duval Medical Center Floor Plans, 1969

Duval Medical Center

Follow this and additional works at: <https://digitalcommons.unf.edu/dmcuc>



Part of the [Business Commons](#), and the [Health and Medical Administration Commons](#)

Recommended Citation

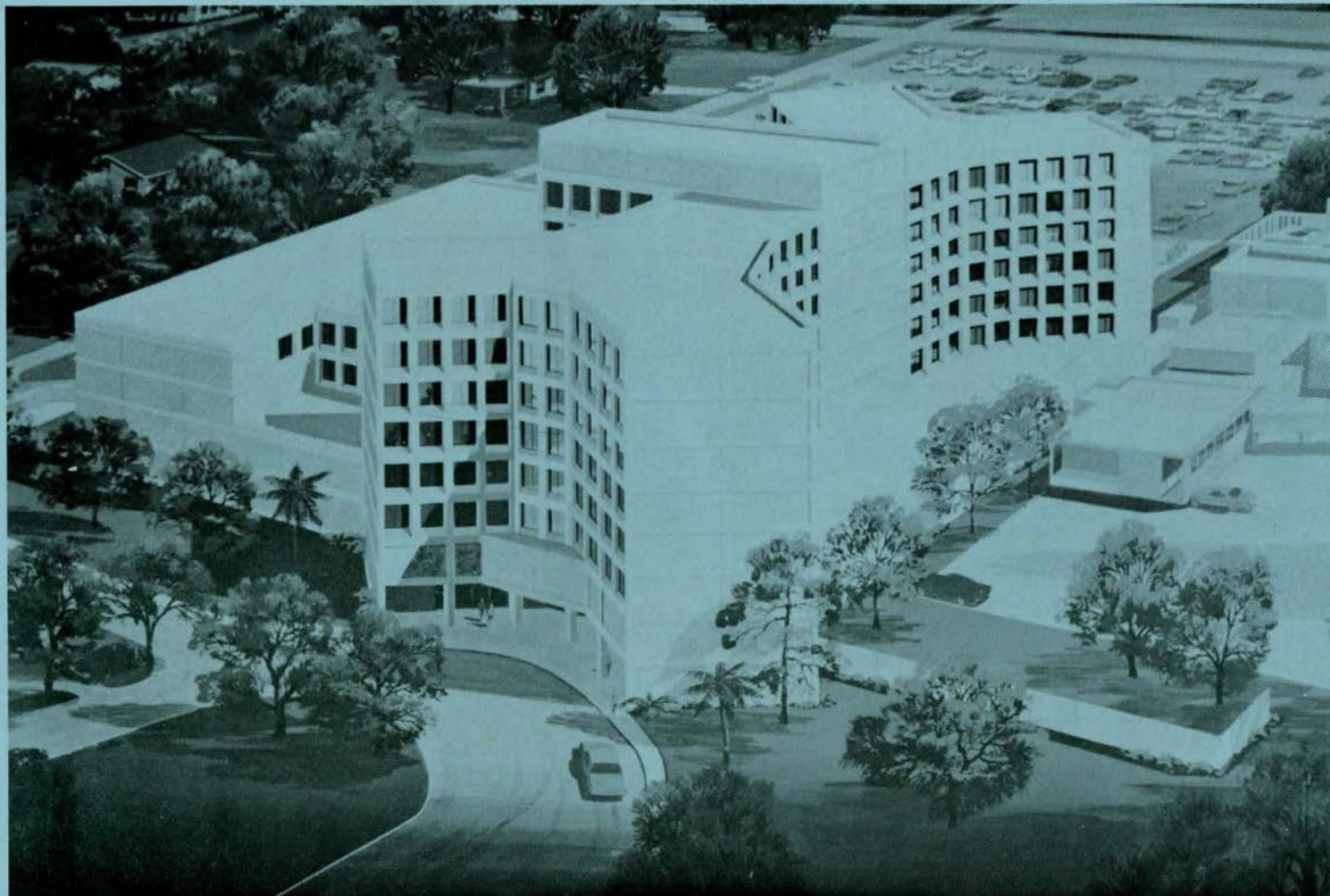
Duval Medical Center. Booklet: Duval Medical Center Floor Plans, 1969. Duval Medical Center, University Hospital Collection. Dr. Edna Louise Saffy Collection. University of North Florida, Thomas G. Carpenter Library Special Collections and Archives. UNF Digital Commons. <https://digitalcommons.unf.edu/dmcuc/7/>

This Archival Material is brought to you for free and open access by the Duval Medical Center, University Hospital, Jacksonville, Florida Collection at UNF Digital Commons. It has been accepted for inclusion in Documents from the Duval Medical Center, University Hospital Collection by an authorized administrator of UNF Digital Commons. For more information, please contact [Digital Projects](#).

© 12-12-1969 All Rights Reserved

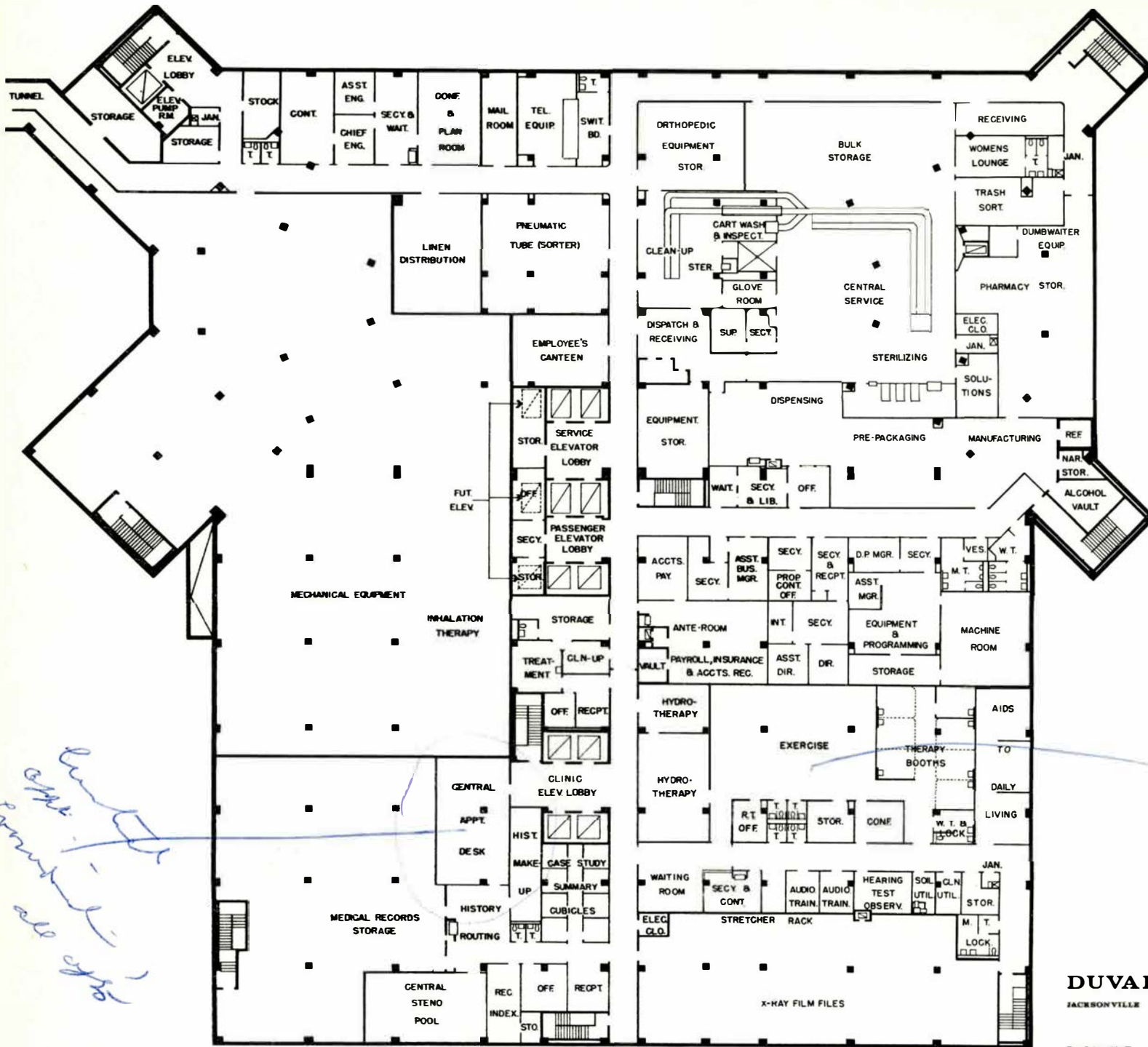
Discussion - Mr. Dodder.

12/14/69



DUVAL MEDICAL CENTER

**2000 JEFFERSON STREET
JACKSONVILLE, FLORIDA**



256 beds
 44 partitions

Handwritten notes:
 1st flr
 2nd flr
 all cpts

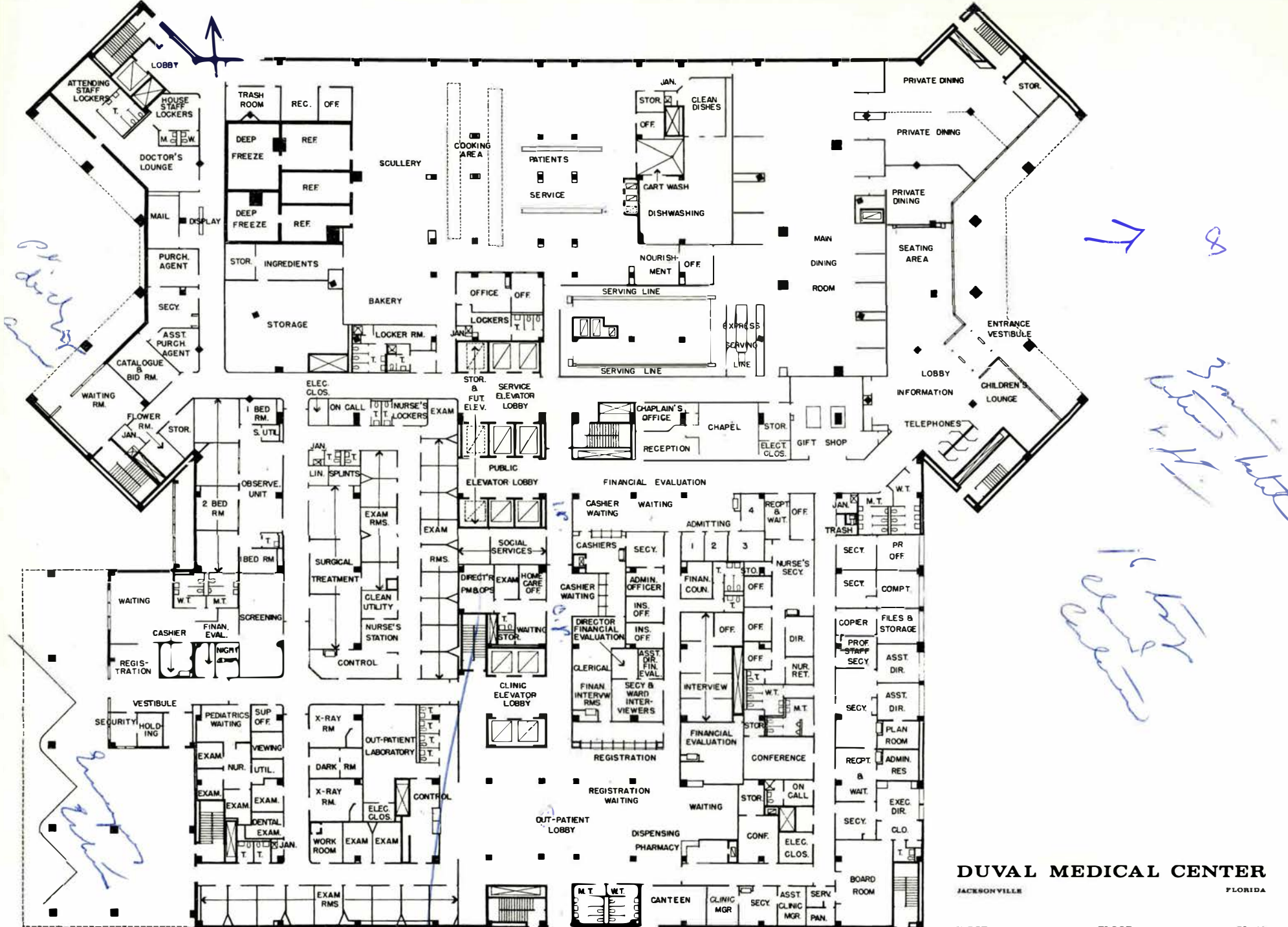
Handwritten signature:
 [Signature]



DUVAL MEDICAL CENTER

JACKSONVILLE FLORIDA

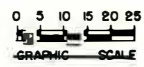
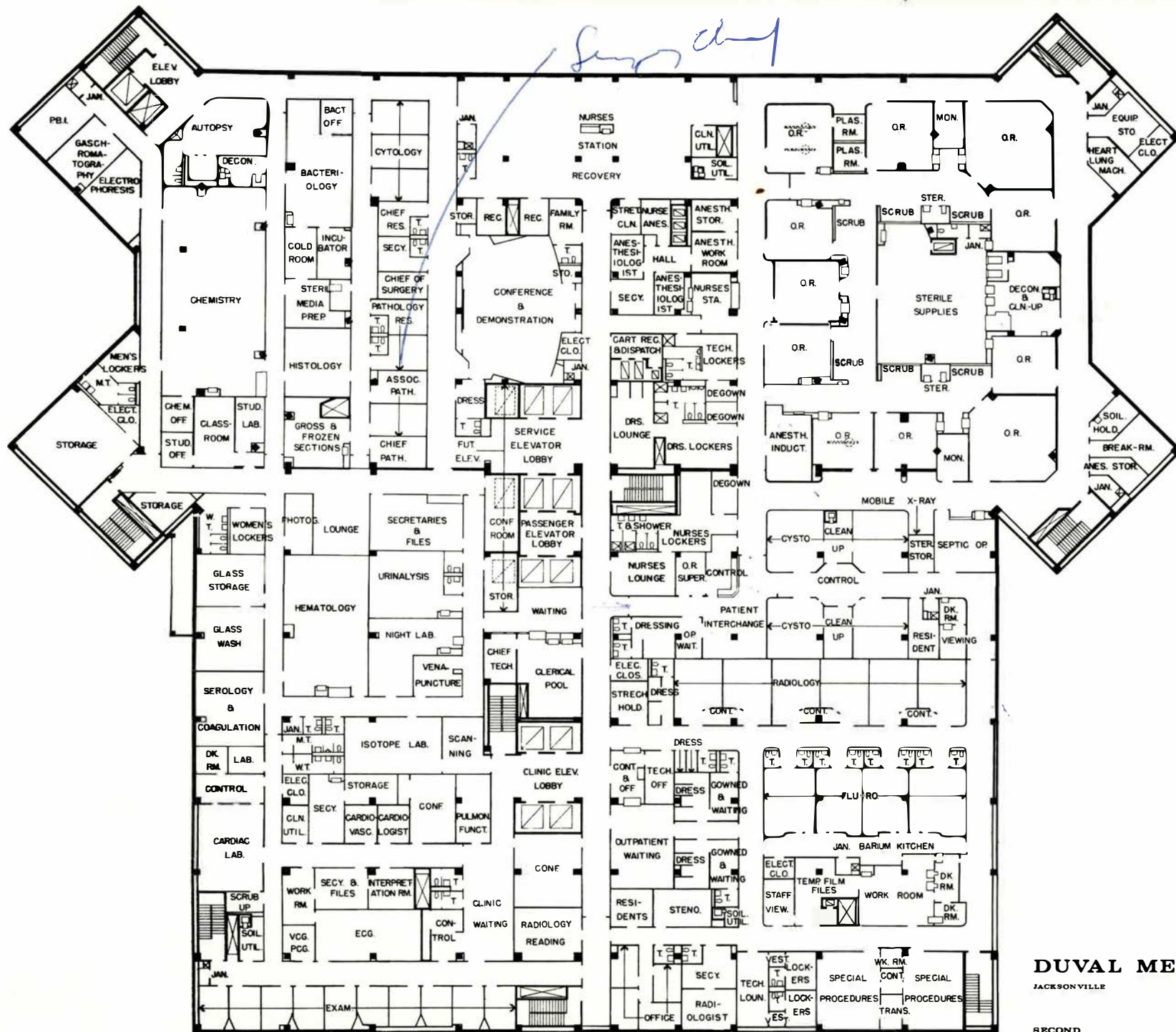
BASEMENT FLOOR PLAN
 RENOLDS, SMITH & HILLS ARCHITECTS & ENGINEERS
 JACKSONVILLE FLORIDA
 ELLERBE CONSULTING ARCHITECTS
 SAINT PAUL MINNESOTA



DUVAL MEDICAL CENTER
 JACKSONVILLE FLORIDA

FIRST FLOOR PLAN
 RENOLDS, SMITH & HILLS ARCHITECTS & ENGINEERS
 JACKSONVILLE FLORIDA
 ELLERBE CONSULTING ARCHITECTS
 SAINT PAUL MINNESOTA

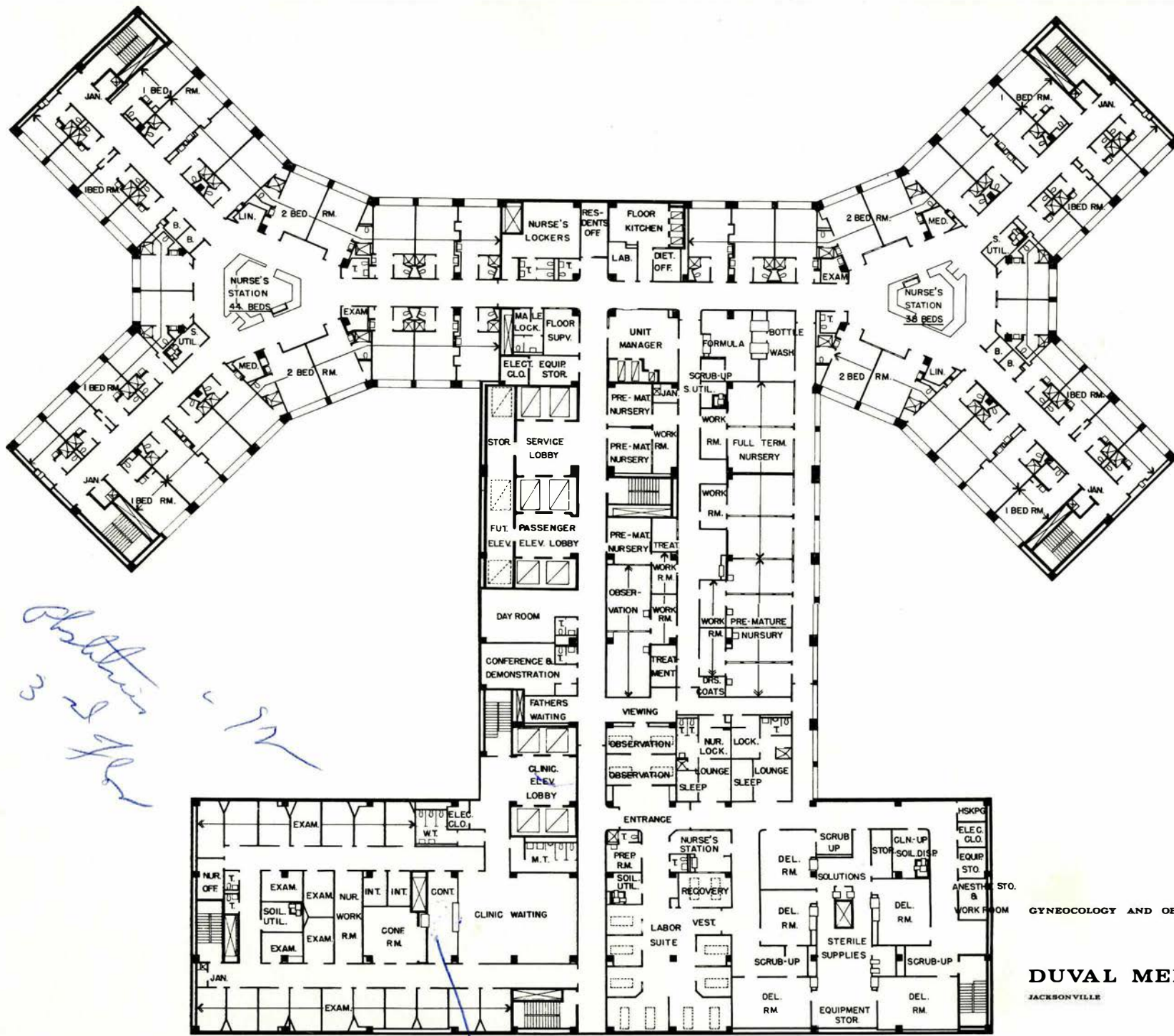




DUVAL MEDICAL CENTER
JACKSONVILLE FLORIDA

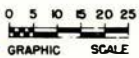
SECOND FLOOR PLAN

RENOLDS, SMITH & HILLS ARCHITECTS & ENGINEERS
JACKSONVILLE FLORIDA
ELLERBE CONSULTING ARCHITECTS
SAINT PAUL MINNESOTA



*Photocopy
3-2-78*

Renolds Smith & Hills



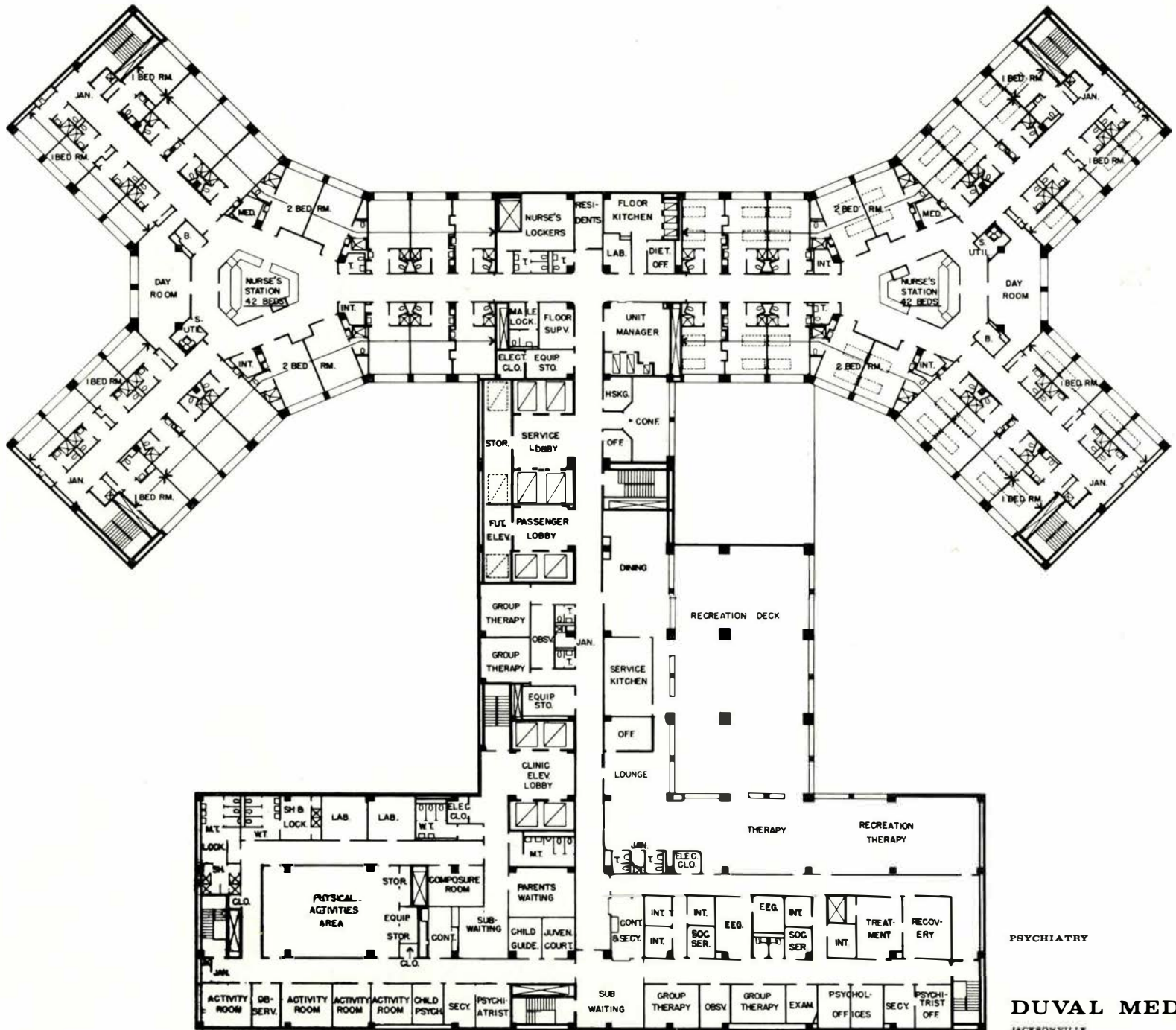
GYNECOLOGY AND OBSTETRICS

DUVAL MEDICAL CENTER

JACKSONVILLE FLORIDA

THIRD FLOOR PLAN

RENOLDS, SMITH & HILLS ARCHITECTS & ENGINEERS
 JACKSONVILLE FLORIDA
 ELLERBE CONSULTING ARCHITECTS
 SAINT PAUL MINNESOTA



*NP 5
Floor*

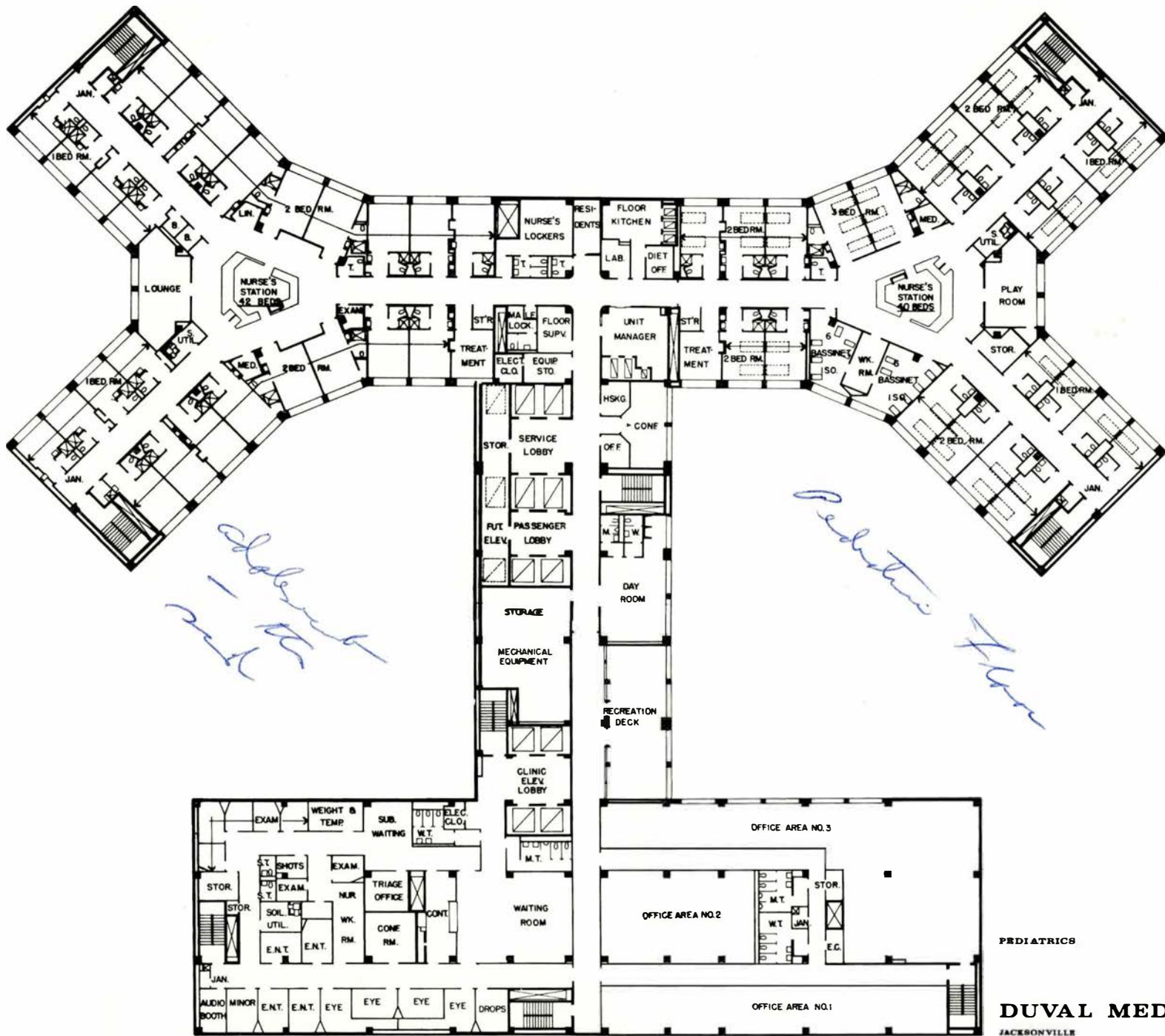
PSYCHIATRY

DUVAL MEDICAL CENTER

JACKSONVILLE FLORIDA



FOURTH FLOOR PLAN
 RENOLDS, SMITH & HILLS ARCHITECTS & ENGINEERS
 JACKSONVILLE FLORIDA
 ELLERBE CONSULTING ARCHITECTS
 SAINT PAUL MINNESOTA



PEDIATRICS

DUVAL MEDICAL CENTER

JACKSONVILLE

FLORIDA

FIFTH

FLOOR

PLAN

REYNOLDS, SMITH & HILLS

ARCHITECTS & ENGINEERS

JACKSONVILLE

FLORIDA

ELLERBE

CONSULTING

ARCHITECTS

SAINT PAUL

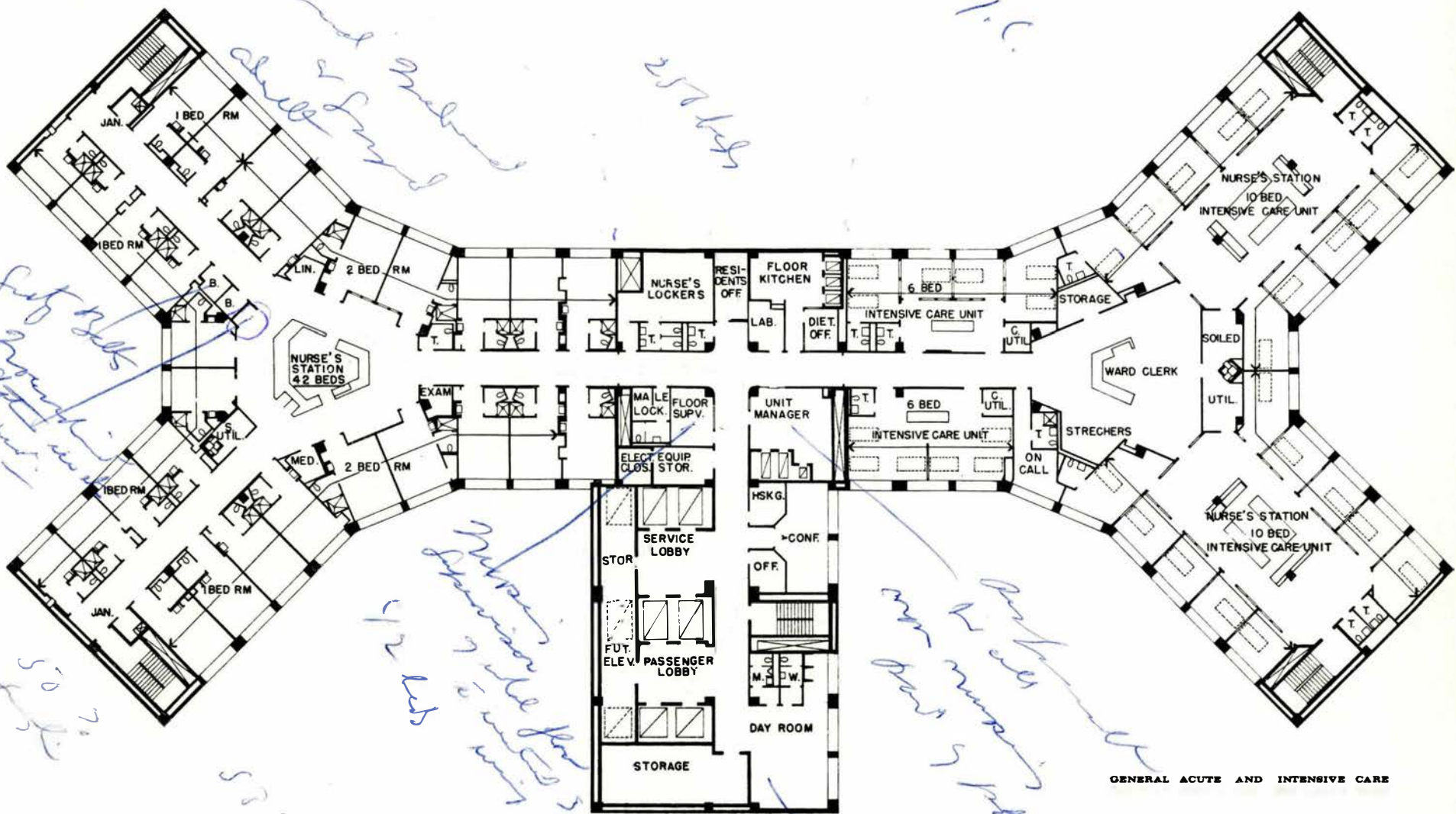
MINNESOTA



~~Handwritten scribble~~

5.7V

2-8
 6 Apr 11
 1. C.
 2
 4
 5
 11
 12
 13
 14
 15
 16
 17
 18
 19
 20
 21
 22
 23
 24
 25
 26
 27
 28
 29
 30
 31
 32
 33
 34
 35
 36
 37
 38
 39
 40
 41
 42
 43
 44
 45
 46
 47
 48
 49
 50
 51
 52
 53
 54
 55
 56
 57
 58
 59
 60
 61
 62
 63
 64
 65
 66
 67
 68
 69
 70
 71
 72
 73
 74
 75
 76
 77
 78
 79
 80
 81
 82
 83
 84
 85
 86
 87
 88
 89
 90
 91
 92
 93
 94
 95
 96
 97
 98
 99
 100



General Acute & Intensive Care

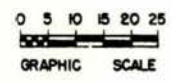
257 beds

*Foot lock
Plaster
Hand*

*Preparation of whole floor
provision of all floor
units*

*more to be added
main entrance*

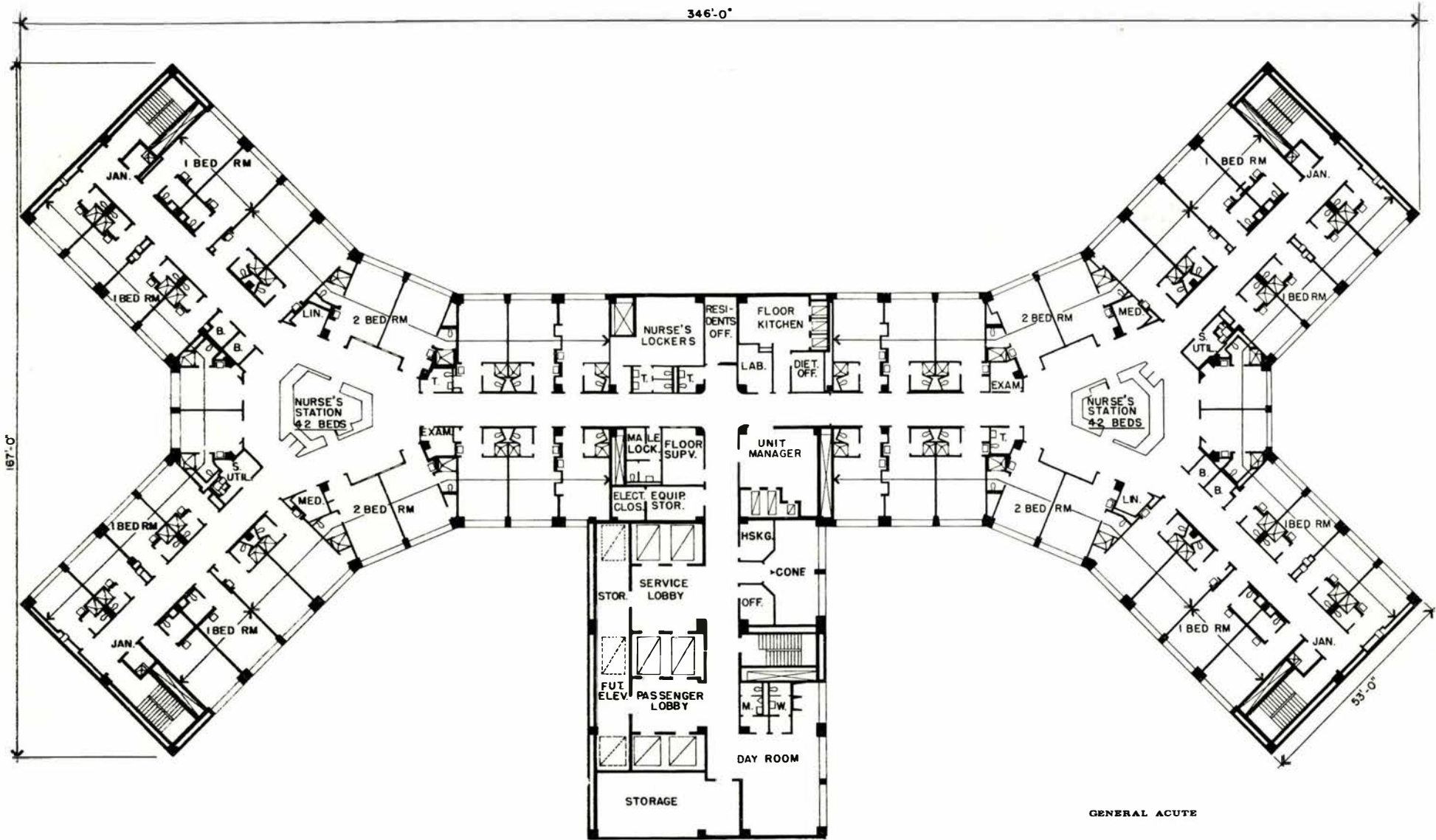
*50 beds
70
84 beds / plan*



GENERAL ACUTE AND INTENSIVE CARE

DUVAL MEDICAL CENTER
JACKSONVILLE FLORIDA

SIXTH FLOOR PLAN
RENOLDS, SMITH & HILLS ARCHITECTS & ENGINEERS
JACKSONVILLE FLORIDA
ELLERBE CONSULTING ARCHITECTS
SAINT PAUL MINNESOTA



GENERAL ACUTE

DUVAL MEDICAL CENTER

JACKSONVILLE

FLORIDA

SEVENTH & EIGHTH FLOOR PLAN

RENOLDS, SMITH & HILLS ARCHITECTS & ENGINEERS
 JACKSONVILLE FLORIDA
 ELLERBE CONSULTING ARCHITECTS
 SAINT PAUL MINNESOTA

Constant Capital April 1971

~~Operation date~~

But April - October -

Good move

October 1 1971 - well

- full operation

