

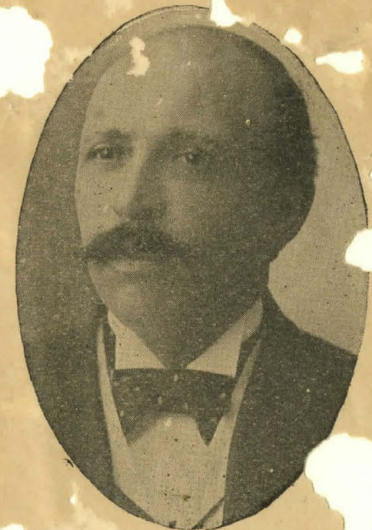
No. 205

# Certificate of Donation

TO

## Bethel Baptist Institutional Church

Valued at \$150,000.00



JOHN E. FORD, D. D., Lign

J. MILTON WALDRON, D. D.  
Erector



This Certifies, that *Sis Clara White*

Has donated (*One*) of the allotments of TEN DOLLARS each toward the final liquidation of the bonded indebtedness of

### Bethel Baptist Institutional Church

In Witness Whereof, the said Church has caused this Certificate to be signed by the duly appointed officers, and sealed with the seal of this Institution, located at Jacksonville, Florida.

This *14<sup>th</sup>* day of *Nov* A. D. 1918.

*John E. Ford*  
Pastor

*W. O. Clark*  
Church Clerk

*Isaac Johnson*  
Chairman of the Trustee Board

*A. H. Adams*  
Church Treas. & Chairman of the Deacon Board

*Samuel Smith*  
Chairman of the Rally Committee

*C. S. ...*  
General Secretary and Camp

Allotments \$10 Each