

2014

## Navigating the Universe of ETDs: Streamlining for an Efficient and Sustainable Workflow at the University of North Florida Library

Courtenay McLeland  
*University of North Florida, d.c.mcleland@unf.edu*

Marielle Veve  
*University of North Florida, m.veve@unf.edu*

Follow this and additional works at: [https://digitalcommons.unf.edu/library\\_facpub](https://digitalcommons.unf.edu/library_facpub)



Part of the [Library and Information Science Commons](#)

---

### Recommended Citation

"Navigating the Universe of ETDs: Streamlining for an Efficient and Sustainable Workflow at the University of North Florida Library" -- Presentation at the USETDA Annual Conference, Orlando, FL, Sept. 2014 by Courtenay McLeland and Marielle Veve

This Conference Proceeding is brought to you for free and open access by the Thomas G. Carpenter Library at UNF Digital Commons. It has been accepted for inclusion in Library Faculty Presentations & Publications by an authorized administrator of UNF Digital Commons. For more information, please contact [Digital Projects](#).  
© 2014 All Rights Reserved



# **Navigating the Universe of ETDs:** Streamlining for an Efficient and Sustainable Workflow at the University of North Florida Library

Courtenay McLeland  
Marielle Veve

September 24, 2014



# The University of North Florida

- We have 5 Colleges offering a total of 36 graduate programs.
- Our fall 2013 FTE was 10,400
- We receive an average of 25 ETDs per term and have about 500 papers in the repository, covering 1978 forward.



# Digital Projects & Preservation Department

- In 2011 the library's Digital Projects unit was established & combined with the extant Preservation department.
- The department is within Technical Services and has one librarian, three staff members, and between 1 and 2 student assistants.
- We also receive support from the Metadata Librarian and the Discovery Enhancement Department.



# Retrospective Theses & Dissertations

- In February of 2011 the library established the [UNF Digital Commons](http://digitalcommons.unf.edu) <http://digitalcommons.unf.edu> using the bepress Digital Commons platform.
- As permissions were acquired, staff began digitizing papers, transferring metadata from catalog records, and uploading to the repository.

## Search

Enter search terms:

Search

in this repository ▼

[Advanced Search](#)

Notify me via email or [RSS](#)

## Browse

[Collections](#)

[Disciplines](#)

[Authors](#)

## Author Corner

[Author Information](#)

[Submit Research](#)

## Links

[Copyright Information](#)

## Browse by Research Unit, Center, or Department

Content posted here has been selected and deposited by the individual campus groups. For more information, see [About the Repository](#).

[Expand All](#)

- ⊕ [Academic Affairs](#)
  - [Academic Technology Innovation Symposium](#)
- ⊕ [Brooks College of Health](#)
  - [Center for Instructional Research and Technology \(CIRT\)](#)
- ⊕ [Coggin College of Business](#)
- ⊕ [College of Arts and Sciences](#)
- ⊕ [College of Computing, Engineering and Construction](#)
- ⊕ [College of Education and Human Services](#)
  - [Journal of Interpretation](#)
- ⊕ [Mayor's Commission on the Status of Women](#)
- ⊕ [Special Collections and University Archives](#)
- ⊕ [Student Government](#)
- ⊕ [Student Scholarship](#)
  - [The Osprey Journal of Ideas and Inquiry](#)
  - [UNF Theses and Dissertations](#)
  - [UNF Undergraduate Honors Theses](#)
- ⊕ [Thomas G. Carpenter Library](#)
- ⊕ [UNF Jazz Archives](#)



# The Next Step: Deposited ETDs

- Both the library and the Graduate School were interested in moving to electronic only student submissions.
- In the fall of 2012 the library and graduate school ceased to accept paper copies.

The screenshot shows the 'UNF THESIS AND DISSERTATIONS' upload form. The form is organized into several sections, each with a red header:

- Title:** A text input field for the title of the work.
- Author:** A text input field for the author's name, with a search dropdown below it.
- Birth Date:** A date selection field.
- Year of Publication:** A dropdown menu for the year.
- Season of Publication:** A dropdown menu for the season.
- Keywords:** A text input field for keywords, with a note to use semicolons as delimiters.
- College:** A dropdown menu for the college.
- Degree Name:** A dropdown menu for the degree name.
- Department:** A dropdown menu for the department.
- First Advisor:** A text input field for the first advisor's name.
- Second Advisor:** A text input field for the second advisor's name.
- Third Advisor:** A text input field for the third advisor's name.
- Fourth Advisor:** A text input field for the fourth advisor's name.
- Fifth Advisor:** A text input field for the fifth advisor's name.
- Department Chair:** A text input field for the department chair's name.
- College Dean:** A text input field for the college dean's name.
- Subject Categories:** A list of checkboxes for selecting subject categories.
- Abstract:** A large text area for entering the abstract.
- Upload Full Text:** A section for uploading the full text file, including checkboxes for 'Upload the full text' and 'Upload the full text as a PDF'.

# Fields in the upload form

- Title, author, birthdate
- Year and season of publication
- Keywords, with *semicolons* as delimiters
- College, degree name, department
- Advisors, department chair, dean
- Bepress Subject Disciplines
- Abstract
- and finally file and supplemental file submittal



# Student Submission Agreement

## UNF THESES AND DISSERTATIONS

### Submission Instructions

Follow the instructions below to submit to *UNF Theses and Dissertations*. You will be notified shortly regarding the suitability of your submission for the series.

Before submitting, please read all relevant policies and/or submission guidelines.

The submission process consists of the following steps:

1. Read and accept the Submission Agreement below
2. Provide information about yourself and any co-authors
3. Upload your electronic file and any associated files

Before you begin, please be sure you have the following items:

- The submission's title
- The abstract (up to 300 words)
- A list of keywords (6 maximum)
- The complete electronic version of your thesis or dissertation

### Submission Agreement for *UNF Theses and Dissertations*

By checking the box below, I grant *UNF Theses and Dissertations* on behalf of University of North Florida the non-exclusive right to distribute my submission ("the Work") over the Internet and make it part of the UNF Digital Commons.

I warrant as follows:

1. that I have the full power and authority to make this agreement;
2. that the Work does not infringe any copyright, nor violate any proprietary rights, nor contain any libelous matter, nor invade the privacy of any person or third party;
3. that the Work has not been published elsewhere with the same content or in the same format; and
4. that no right in the Work has in any way been sold, mortgaged, or otherwise disposed of, and that the Work is free from all liens and claims.

I understand that once a Work is deposited in the repository, it may not be removed.

**NOTE:** It is suggested that you print this page for your records.

Please check this if you agree to the above terms.

# Administrative Fields

On the administrative side we also have fields for

- Embargo
- Degree type

## **REQUIRED** Embargo Period

If you do not want to apply an embargo, simply enter today's date.

Month	Day	Year
--	--	

## **REQUIRED** Degree Type

Degree Type:

Campus Access Master's Thesis

# Metadata-only option

**Title:**

**Authors:**



**Last Event:** Revision uploaded (Fri Mar 14 2014)

**Waiting for Administrator:**  **Locked by Administrator:**

**Administrator:** No administrator assigned **Manuscript:** #1500 [PDF](#)

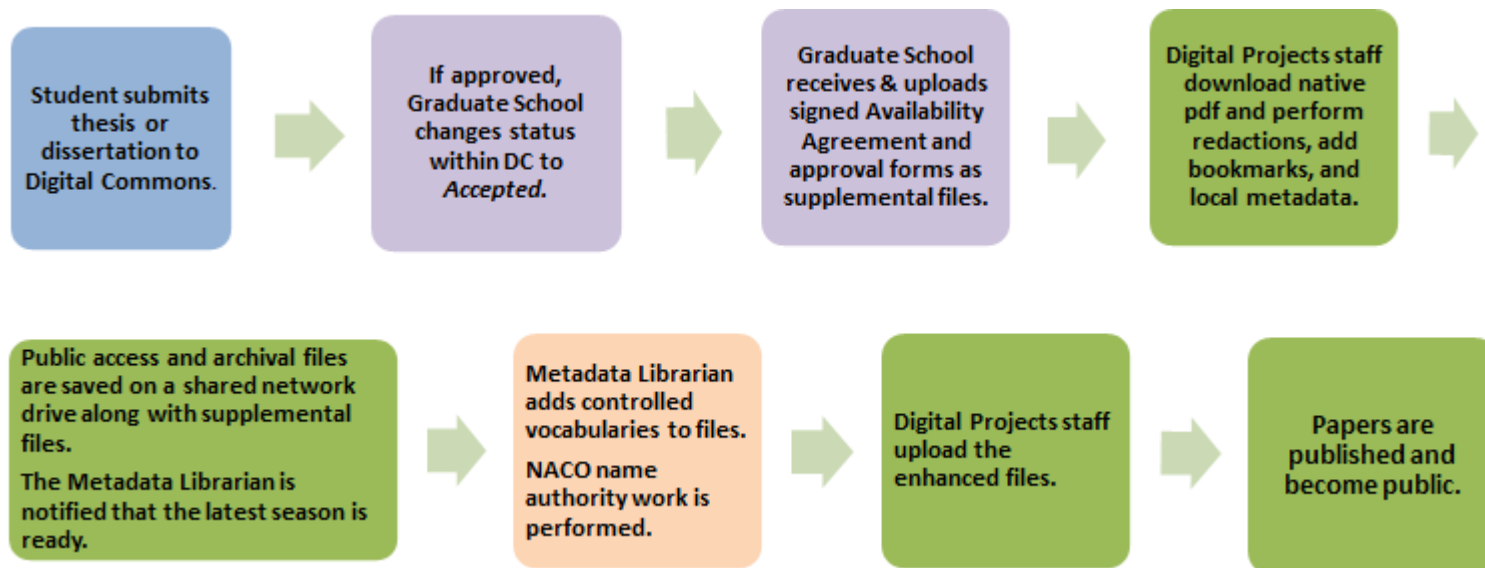
## Download link behavior

Make full-text download available to users as:

 PDF   No full-text: Metadata only

This document is not currently available here. Contact the [Carpenter Library](#) to request access or submit feedback.

# Workflow



# Metadata

- **1976 to Summer 2012:** metadata existed in OCLC, ALEPH and Digital Commons (only for digitized ones)
- **Fall 2012 and on:** not in OCLC, metadata directly added into Digital Commons

# Metadata Workflow

- **ETD authors:** enter keywords used in discipline
- **Library staff:** provides metadata to be used for local purposes
- **Metadata librarian:** assigns controlled vocabulary metadata (LCSH, creates NACO names for authors and Departments using supplemental files and birthdate provided by ETD author)

# Avoid Duplication & Increase Access

- To **increase access #1**: Retrospectively added URLs from the digitized ETDs into the OCLC records (1976 to Summer 2012) to link both records
- To **increase access #2**: Designed a workflow to automatically harvest metadata from DC to OCLC (Fall 2012 on) in order to have quality metadata in both places without duplication of effort

# Harvesting Workflow

- 1) Library collaborated with BePress to:
  - a) Adjust administrative form of ETDs to accept controlled vocabulary metadata
  - b) Make sure these controlled fields map correctly into Qualified Dublin Core (QDC) metadata

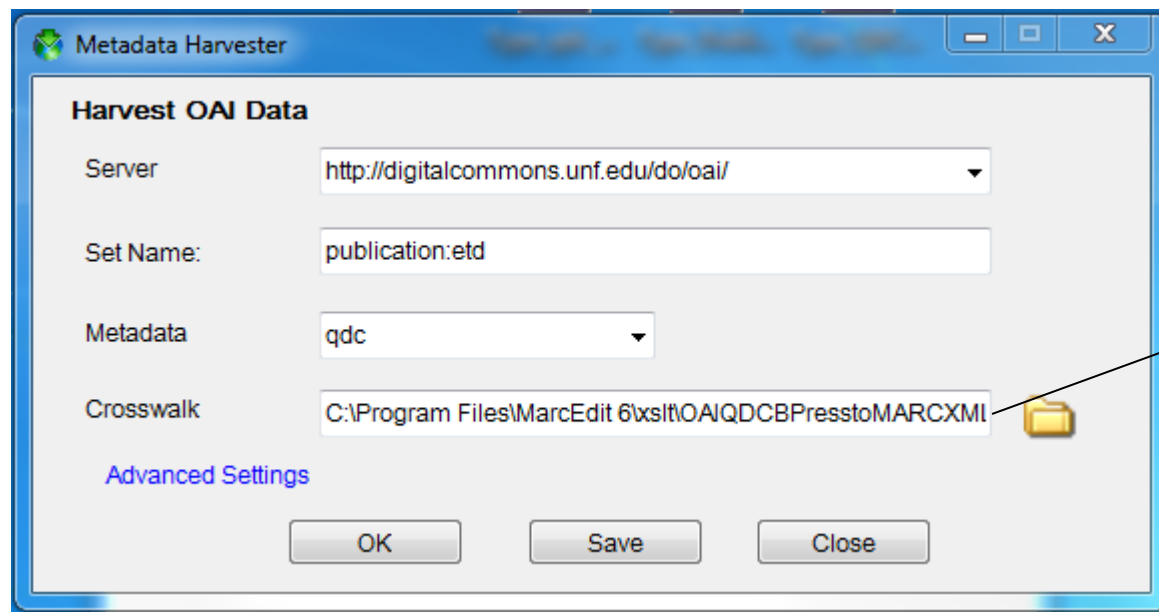
Submission Metadata	
Metadata Field	Value
Title	Functional Characterization of a Putative Disaccharide Membrane Transporter
NACO controlled Corporate Body	University of North Florida. Department of Biology.
NACO Name	Likely, Rasheda S., 1988-
Controlled Terms	American lobster -- Digestive organs; Sucrose -- Absorption and adsorption; Sug
Keywords	Thesis, University of North Florida, UNF, Dissertations, Academic -- UNF -- Master

```
<dc:thesis.degree.grantor>University of North Florida. Department of
Biology.</dc:thesis.degree.grantor>
<dc:creator>Likely, Rasheda S., 1988-</dc:creator>
<dc:contributor>Dr. Gregory Ahearn</dc:contributor>
<dc:contributor>Dr. Eric Johnson</dc:contributor>
<dc:contributor>Dr. Julie Richmond</dc:contributor>
<dc:subject.lcsh>American lobster -- Digestive organs; Sucrose --
Absorption and adsorption; Sugars -- Physiological transport; American
lobster -- Physiology</dc:subject.lcsh>
<dc:subject>Biology</dc:subject>
<dc:subject>Life Sciences</dc:subject>
```



# Harvesting Workflow

2) A feed request is made for UNF ETDs records in QDC metadata using MarcEdit Harvester



```
<datafield tag="101" ind1="1" ind2="1" >
  <datafield code="a">online resource</datafield>
</datafield>
<datafield tag="110" ind1="1" ind2="1" >
  <datafield code="a">text</datafield>
  <datafield code="b">text</datafield>
  <datafield code="2">document</datafield>
</datafield>
<datafield tag="131" ind1="1" ind2="1" >
  <datafield code="a">computer</datafield>
  <datafield code="b">oc</datafield>
  <datafield code="2">document</datafield>
</datafield>
<datafield tag="181" ind1="1" ind2="1" >
  <datafield code="a">online resource</datafield>
  <datafield code="b">oc</datafield>
  <datafield code="2">document</datafield>
</datafield>
<xsl:for-each select="dc:thesis.degree_name">
  <datafield tag="102" ind1="1" ind2="1" >
    <datafield code="a">thesis (callvalue-of select-
</datafield>
```

# Harvesting Workflow

3) A customized extensible stylesheet XSLT (crosswalk path) is created and used.

```
<datafield tag="300" ind1=" " ind2=" ">
  <subfield code="a">1 online resource</subfield>
</datafield>

<datafield tag="336" ind1=" " ind2=" ">
  <subfield code="a">text</subfield>
  <subfield code="b">txt</subfield>
  <subfield code="2">rdacontent</subfield>
</datafield>

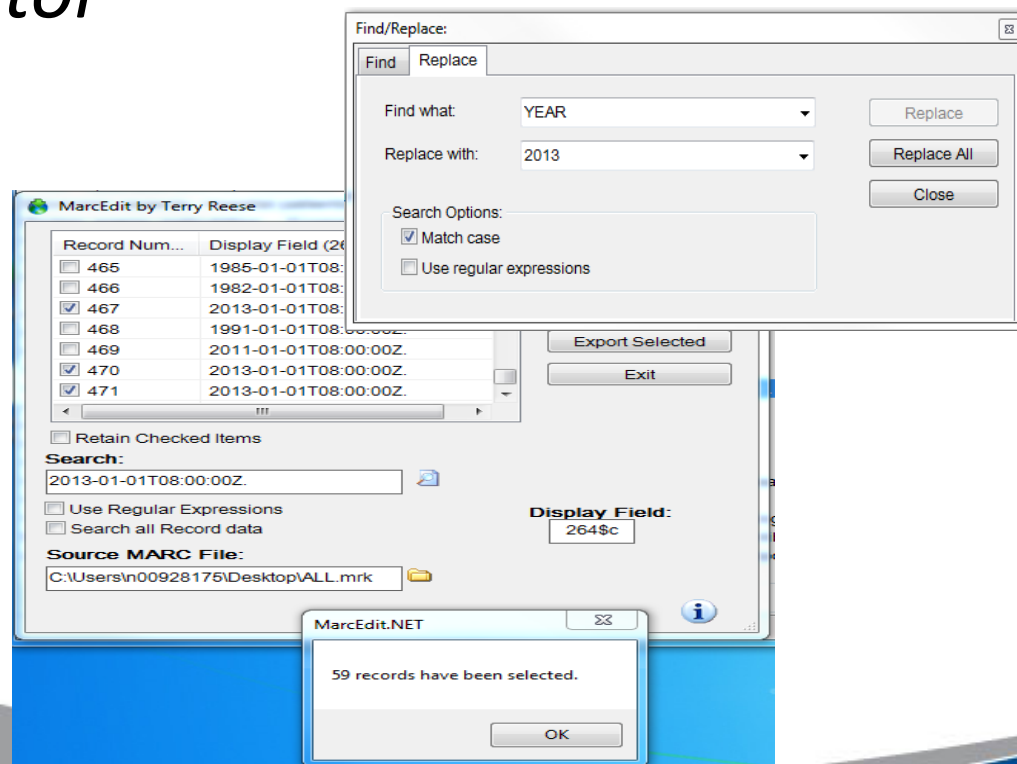
<datafield tag="337" ind1=" " ind2=" ">
  <subfield code="a">computer</subfield>
  <subfield code="b">c</subfield>
  <subfield code="2">rdamedia</subfield>
</datafield>

<datafield tag="338" ind1=" " ind2=" ">
  <subfield code="a">online resource</subfield>
  <subfield code="b">cr</subfield>
  <subfield code="2">rdacarrier</subfield>
</datafield>

<xsl:for-each select="dc:thesis.degree.name">
  <datafield tag="502" ind1=" " ind2=" ">
    <subfield code="a">Thesis (<xsl:value-of select="
```

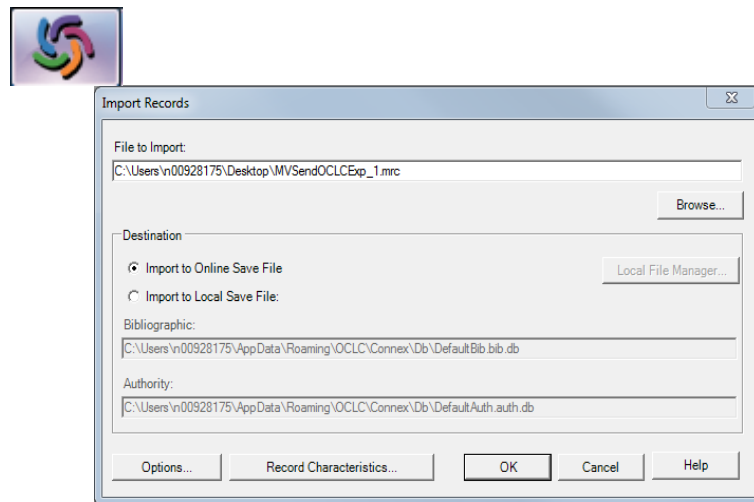
# Harvesting Workflow

4) The rest of the edits that cannot be performed using a stylesheet only, are performed using the *MARCEditor*



# Harvesting Workflow

5) Brief quality control test is done in OCLC before batch loading records in OCLC.





# Experiences and Challenges

## Lessons Learned:

- 1) Lock access of records' metadata in DC to administrators only after ETD is approved (to avoid students going back and changing controlled metadata)
- 2) Adjust metadata form students fill in Digital Commons and voluntarily ask for author's birthdate.
- 3) Use Qualified Dublin Core instead of Simple Dublin Core for ETDs, is more granular.
- 4) Try to use an extensible stylesheet designed only for ETDs and customize it enough so that most of the edits can be performed automatically at this stage.

# Future plans & Improvements

- In March of 2014 we had enough content and departmental interest to begin collecting out to series underneath each college in addition to the main series.
- May experiment by adding advisors' names to the authority control and see if they can map successfully from QDC to MARC records.

# END

This presentation will be available at:

[http://digitalcommons.unf.edu/library\\_facpub/27/](http://digitalcommons.unf.edu/library_facpub/27/)

The screenshot displays the University of North Florida Digital Commons interface. At the top left is the UNF logo (a stylized bird) and the text 'UNF UNIVERSITY of NORTH FLORIDA'. To the right of this is the main title 'Digital Commons'. Below the title is a navigation bar with links for 'Home', 'About', 'FAQ', and 'My Account'. The main content area is divided into a left sidebar and a main right section. The sidebar contains a 'Search' section with a search input field, a 'Search' button, a dropdown menu set to 'in this series', and links for 'Advanced Search' and 'Notify me via email or RSS'. Below the search section is a 'Browse' section with a 'Collections' link. The main right section shows a breadcrumb trail: 'Home > LIBRARY > LIBRARY FACPUB'. Below this is the title 'LIBRARY FACULTY PRESENTATIONS & PUBLICATIONS' and a 'Follow' button. At the bottom of the main section, it says 'Submissions from 2014'.