

1965

Palm Beach County Planning Department Statistical Data

Palm Beach County Planning Department

Follow this and additional works at: <https://digitalcommons.unf.edu/simonsflorida>

Recommended Citation

Palm Beach County Planning Department Statistical Data. 1965. George W. Simons, Jr. Planning Collection. University of North Florida, Thomas G. Carpenter Library Special Collections and Archives. UNF Digital Commons, <https://digitalcommons.unf.edu/simonsflorida/68/>

This Book is brought to you for free and open access by the George W. Simons, Jr. Publications and Printed Materials at UNF Digital Commons. It has been accepted for inclusion in City and Regional Planning -- Florida by an authorized administrator of UNF Digital Commons. For more information, please contact [Digital Projects](#).
© 1965 All Rights Reserved

AUT
 TOT OFF

TR

=

=

÷

X

IN
 MEM

NA

OUT

REP
 OFF

CLEAR

7

8

9

4

5

6

1

2

3

.

..

...

-

+

T

D

ST

PALM BEACH COUNTY

PLANNING DEPARTMENT
STATISTICAL DATA

PALM BEACH COUNTY
 PLANNING DEPARTMENT TRANSPORTATION STUDY
 February 1 - March 15
 1965

PREFACE

The information presented in this report was gathered by the Palm Beach County Planning Department for the Florida State Road Department as part of the West Palm Beach Urban Area Transportation Study, and therefore is presented in terms of traffic zones rather than in more common geographical areas such as census divisions or municipal boundaries.

The Home Interview Survey is among the sources of data which are given on the Title Page preceding each Table. The following is a brief explanation of the procedure used in conducting this survey in March-April 1965.

An accurate dwelling unit count was made for each traffic zone from aerial photographs flown in February 1965 and land use information from which a random sample of units was preselected. The sample size varied with the size (in terms of dwelling units) of the zone; the smaller zones were sampled at a higher percentage than the larger zones, but the overall rate was 3.8%. The interviews were made according to the format of the sample interview sheet shown on the left of this page.

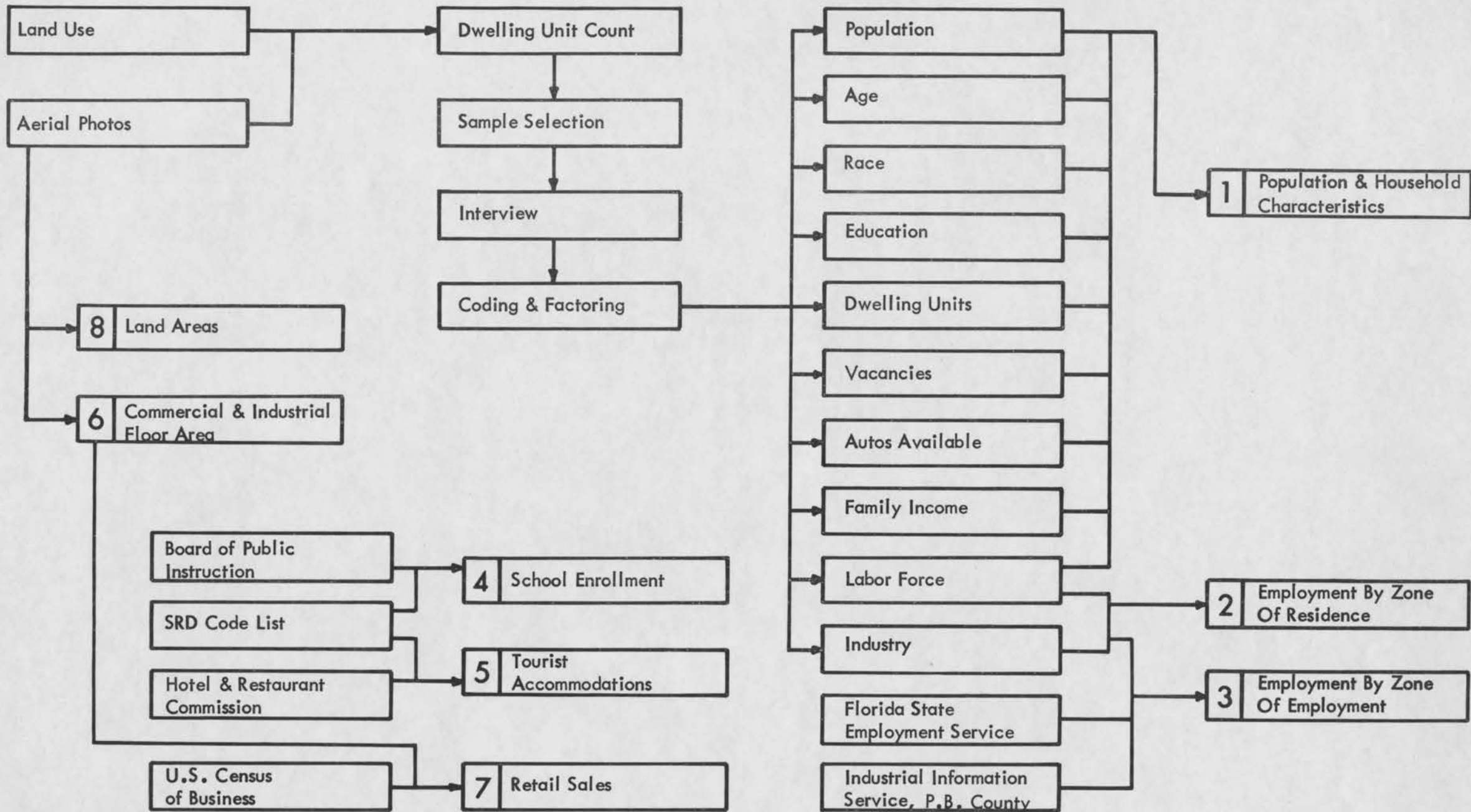
Dwelling unit counts, population, and vacancy rates for each zone were verified by comparison with similar data gathered by the State Road Department during the course of their Home Interview Trip Survey, based on a 10% sample, which was conducted in March-April 1965.

Maps of Traffic Zones and Population Density are enclosed in the back of this report.

							14 YEARS OF AGE OR OVER					
Respondent	MEMBER HOUSEHOLD		Sex	Race	Age	Attend. Sch.	Highest Grade	Worked Last Wk.	Labor Force	OCCUPATION		INDUSTRY
A	1	2	3	4, 5	6	7		8	9	10, 11	12, 13	

HEAD OF HOUSEHOLD		TOTAL HOUSEHOLD	
B			
1. Where was the head of household born?		C	
		1. Number of automobiles operated by all members?	
14- _____		_____ 20-	
City (County)	State		
2. Where did the head of household live on April 1, 1960?		2. Total combined income of this household last year?	
		0 - 1999 _____ 21-1	
16- _____		2000 - 3999 _____ -2	
City (County)	State	4000 - 5999 _____ -3	
3. Type of Dwelling:		6000 - 7999 _____ -4	
Single _____ 18-1		8000 - 9999 _____ -5	
Duplex _____ -2		10000 or Over _____ -6	
Multiple _____ -3			
Other _____ -4			
4. Rent or Own Home?		INTERVIEWER _____	
Rent _____ 19-1		SUPERVISOR _____	
Own _____ -2		DATE OF CALLS: _____	
		FINAL RESULT: _____	
		CODED BY (M) _____	
		CHECKED BY _____	
		CODED BY (HD) _____	
		CHECKED BY _____	
		D	
		STREET ADDRESS _____	

		TRAFFIC ZONE NO. _____ 22-	
		SCHEDULE NO. _____ 25-	



DATA COLLECTION PROCESS

WPBUATS Current Information Report

DOCUMENTATION OF DATA SUPPLIED BY THE PALM BEACH COUNTY PLANNING DEPARTMENT FOR THE WEST PALM BEACH URBANIZED AREA TRANSPORTATION STUDY.

I. LAND USE INVENTORY.

- A. A study was undertaken in the Spring of 1964 to determine the availability of existing land use information for the thirty-five municipalities in the study area. The City of West Palm Beach had information one year out of date; the remainder of the area had no existing data. There was no available base map of the study area, nor any correlation between the existing city maps. In light of this situation, the following action was undertaken.
1. Initiated a base mapping program at a scale of 1" = 2000'. The coast and geodetic base was supplemented by aerial photography flown by the Florida State Road Department and the U.S. Department of Agriculture, both taken in February of 1964.
 2. Initiated a contract for aerial photography at a scale of 1" = 200' on cronoflex for specific area treatment and land area measurements.
 3. Collected existing base maps from all sources and commenced a field check of existing land use.
 4. Determination was made at this time to collect narrative type land use rather than coding information in the field. In situations where land use was very dense, a system of block numbering with detail sheets attached indicating use, size, type, etc., were used. This system proved to be most satisfactory in view of the various categories for which we have been requested to furnish information.
 5. A generalized land use plan was prepared from these field sheets at a scale of 1" = 2000' for the establishment of traffic zones.
 6. Completion of the 1" = 200' aerial photography in February 1965 provided a very interesting check and update of land use information gathered in the field with a minimum of additional field work.
 7. Land Area Measurements (Table No. 8 on Flow Chart) were then compiled from the 1" = 200' aeriels using planimeters and grid overlays.
 8. The City of West Palm Beach initiated an update and tabulation of their existing data for this office.
- B. The calculations of Commercial and Industrial Floor Area (Table No. 6 on Flow Chart) were accomplished in the following manner.
1. Checks were made of all municipalities to determine if tax records were available in a form to allow the collection of such data. In those tax offices where this approach was possible, this information was used.

2. In the remainder of the study area an independent check of the 1" = 200' photography was made, estimating the floor area with a grid overlay. Here the narrative land use indicating number of floors reduced field checks to a minimum. The independent calculation of commercial and industrial floor area proved to be a valuable check of the land area measurements which had been previously developed.

II. POPULATION AND ECONOMIC STUDIES.

- A. Population and economic characteristic data was investigated from every possible source. The Palm Beach County study area had not been tracted during the 1960 census, and no independent records were available to allow for the allocation in any area as small as a traffic zone. The determination was made to conduct a Home Interview Survey, and the following procedures were initiated.
 1. The Department of Environmental Research at Florida Atlantic University was contracted to provide services in the development of a questionnaire, sample selection, and including coding, factoring, and tabulation of interview data.
 2. The questionnaire was drawn and determination was made that we might conduct the survey ourselves rather than contracting this service. Personnel were employed, most of which had experience in survey work with the Bureau of the Census or other interview services.
 3. The dwelling unit count from the land use plan was used to select a random sample with overall coverage of between 3 and 4%. Traffic zones with small dwelling unit count were sampled heavy, and fewer interviews were taken in older and more densely occupied zones. The resultant of completed interviews was 3.8% of the study area.
 4. The interview phase of our study was undertaken at the same time as the State Road Department Home Interview Study was underway, making possible significant checks of information.
 5. Coding, factoring, and tabulations were undertaken by Florida Atlantic University. These figures were checked by this Department.

III. CONSTRUCTION OF TABLES.

- A. The methods used in composing Table 8, Land Areas, and Table 6, Commercial and Industrial Floor Area, have been described in Item I above. The following is an explanation of the remaining six tables.

1. Table 1: Population and Household Characteristics.

This Table is composed of the data collected in the Home Interview Survey and the Dwelling Unit Count. Family income, education, and age are medians; auto ownership is the mean number of autos per family.

2. Table 2: Employment by Zone of Residence.

This data was taken from the Home Interview Survey and was checked against data supplied by the Florida State Employment Service.

3. Table 3: Employment by Zone of Employment.

Industrial employment was taken from the Manufacturers Directory, 1965, published by the Palm Beach County Industrial Information Service. Commercial employment was based on the commercial square footage of the zone expressed as a percentage of total commercial square footage for the study area times the total commercial employment as given in Table 2. Other employment consists of agricultural employment based on acres of agricultural land use; domestic employment based on family income; and school employment based on data supplied by the School Board.

4. Table 4: School Enrollment.

This data was supplied by school by the Board of Public Instruction. School addresses were coded to traffic zones with the State Road Department code list.

5. Table 5: Tourist Accommodations.

A list of hotel, motel, and apartment units published by the Florida State Hotel and Restaurant Commission was coded into traffic zones by using the State Road Department code list.

6. Table 7: Retail Sales.

From the 1963 U.S. Census of Business, total retail dollars were determined for the major cities and the remaining area. These figures were multiplied times the percentage of retail floor area in a zone in terms of the square footage of the area. Automobile dealers were excluded from the calculations and were handled in the same manner in a class by themselves.

population and household characteristics

employment by zone of residence

employment by zone of employment

school enrollment

tourist accommodations

commercial and industrial square footage

retail sales

land area

This table, based on the home interview survey, gives 13 of the more significant population and household characteristics for each traffic zone. The Figures are all total whole numbers with the exceptions of age, education, and family income which are medians and autos per dwelling unit which is a mean. Median education was calculated to include only those residents of the zone who were over 5 and not attending school.

population and household characteristics

employment by zone of residence

employment by zone of employment

school enrollment

tourist accommodations

commercial and industrial square footage

retail sales

land area

<u>ZONE</u>	<u>POPULATION</u>	<u>WHITE</u>	<u>AGE</u>	<u>UNDER 5</u>	<u>5-15</u>	<u>OVER 65</u>	<u>EDUCATION</u>	<u>LABOR FORCE</u>	<u>DWELLING UNITS</u>	<u>VACANCIES</u>	<u>OWNED</u>	<u>INCOME</u>	<u>AUTOS</u>
034	-	-	-	-	-	-	-	-	-	-	-	-	-
035	207	207	31.0	14	48	21	12.7	48	75	8	38	10,000+	1.5
036	136	136	55.0	-	-	34	10.5	102	68	-	34	4,000	1.5
037	-	-	-	-	-	-	-	-	-	-	-	-	-
038	-	-	-	-	-	-	-	-	-	-	-	-	-
039	-	-	-	-	-	-	-	-	1	1	-	-	-
040	270	270	52.0	10	10	77	12.7	106	106	10	87	6,680	1.9
041	261	261	36.6	57	23	11	14.5	113	136	45	79	9,000	1.3
042	201	201	10.6	33	33	-	13.8	40	67	-	34	10,000+	2.5
043	14	14	65.0+	-	-	14	10.5	7	7	-	-	4,000	2.0
044	12	12	52.5	-	2	2	12.5	6	4	-	4	8,000	2.0
045	12	12	32.5	2	2	-	12.3	4	4	-	4	4,000	1.5
046	1514	1514	13.8	252	482	69	10.8	482	390	23	321	7,000	1.4
047	235	235	32.5	32	32	-	12.5	96	67	-	67	9,000	1.5
048	1039	1039	43.7	88	88	154	12.2	309	399	23	312	5,680	1.4
049	22	22	65.0	-	-	10	10.5	10	11	-	6	7,000	1.0
050	156	156	37.5	67	-	-	13.0	22	34	-	34	10,000	2.0
051	34	34	65.0+	-	-	23	8.0	11	17	-	17	3,000	1.0
052	678	678	23.7	162	113	32	12.5	210	210	16	162	5,680	1.3
053	321	321	65.0+	32	-	190	12.1	95	168	12	135	1,713	1.0
054	20	20	65.0+	-	-	20	8.2	-	13	-	13	1,000	.5
055	156	156	60.0	-	-	-	12.0	-	52	-	52	10,000+	2.0
056	72	72	22.0	10	21	2	14.5	23	19	2	11	10,000+	1.2
057	821	821	16.2	99	297	43	15.7	142	186	-	186	7,168	1.5
058	137	137	8.7	27	54	-	16.3	27	39	-	39	10,000+	2.0
059	314	314	33.7	19	86	29	16.1	57	99	-	99	10,000+	1.6
060	-	-	-	-	-	-	-	-	-	-	-	-	-
061	2212	2212	20.0	299	718	-	12.4	718	568	-	538	9,120	1.3
062	1368	1368	26.3	189	378	-	12.9	448	434	26	358	7,340	1.4
063	2451	2451	25.3	469	613	72	12.8	649	760	76	510	7,780	1.3
064	2262	2262	24.6	174	783	174	15.5	725	565	-	525	10,000+	1.6
065	60	60	36.6	9	18	-	16.0	18	12	-	12	10,000+	1.5
066	501	501	35.0	58	58	97	12.5	155	233	-	195	6,760	1.1

<u>ZONE</u>	<u>POPULATION</u>	<u>WHITE</u>	<u>AGE</u>	<u>UNDER 5</u>	<u>5-15</u>	<u>OVER 65</u>	<u>EDUCATION</u>	<u>LABOR FORCE</u>	<u>DWELLING UNITS</u>	<u>VACANCIES</u>	<u>OWNED</u>	<u>INCOME</u>	<u>AUTOS</u>
067	1222	1222	32.1	53	133	106	12.7	558	481	27	266	7,600	1.4
068	72	72	10.0	24	24	-	7.0	12	12	-	-	3,000	1.5
069	-	-	-	-	-	-	-	-	-	-	-	-	-
070	188	188	37.4	38	-	-	12.3	75	47	-	47	8,000	2.0
071	448	448	14.9	82	140	-	12.7	118	111	20	60	6,340	1.1
072	259	259	20.3	74	44	7	12.1	74	73	7	44	5,500	1.0
073	48	48	18.7	4	13	-	11.3	8	12	-	6	3,000	2.5
074	-	-	-	-	-	-	-	-	-	-	-	-	-
075	128	128	52.5	-	26	-	17.0	102	64	-	64	7,000	2.0
076	4807	4807	31.9	522	1081	708	12.6	1453	1492	-	1309	8,790	1.4
077	92	92	65.0	-	-	44	12.0	-	46	-	-	10,000+	1.0
078	28	28	-	-	-	-	-	-	7	-	-	-	-
079	-	-	-	-	-	-	-	-	1	1	-	-	-
080	-	-	-	-	-	-	-	-	-	-	-	-	-
081	5080	1372	13.0	237	1424	332	10.2	2371	1318	113	753	3,780	1.0
082	3522	3522	32.9	265	908	530	12.4	1022	1120	-	910	6,760	1.0
083	1128	1128	58.1	36	72	364	12.4	255	500	-	370	7,800	1.1
084	1424	1424	52.4	87	87	320	14.5	465	567	-	475	10,000+	1.3
085	1123	1123	17.5	296	253	34	12.3	317	317	21	296	7,760	1.0
086	63	63	20.0	22	-	-	13.8	22	21	-	21	6,000	1.5
087	1356	-	23.3	134	268	-	10.5	710	297	27	270	4,000	1.5
088	7	-	47.5	-	2	2	7.0	3	2	-	-	3,000	1.0
089	3836	3721	33.0	209	1167	334	12.8	1126	1084	-	731	5,780	1.2
090	1288	1288	64.9	-	-	644	12.4	305	644	33	576	3,600	1.0
091	1622	1622	57.9	99	132	530	12.7	430	652	-	631	8,000	1.3
092	-	-	-	-	-	-	-	-	-	-	-	-	-
093	1241	50	37.5	47	187	117	8.5	774	293	-	293	3,380	1.5
094	3762	-	18.0	398	1194	217	10.0	1266	837	-	653	3,540	1.1
095	180	180	23.7	20	-	40	12.0	40	100	-	80	2,201	1.3
096	172	172	55.0	-	14	-	12.3	43	86	-	72	2,000	1.3
097	565	565	33.3	91	91	146	12.2	146	237	55	146	3,980	1.5
098	10	10	48.3	-	-	-	11.0	7	5	-	5	9,000	2.0
099	2544	2544	48.9	133	332	667	12.5	900	1230	-	820	4,380	1.0

<u>ZONE</u>	<u>POPULATION</u>	<u>WHITE</u>	<u>AGE</u>	<u>UNDER 5</u>	<u>5-15</u>	<u>OVER 65</u>	<u>EDUCATION</u>	<u>LABOR FORCE</u>	<u>DWELLING UNITS</u>	<u>VACANCIES</u>	<u>OWNED</u>	<u>INCOME</u>	<u>AUTOS</u>
100	-	-	-	-	-	-	-	-	-	-	-	-	-
101	-	-	-	-	-	-	-	-	-	-	-	-	-
102	-	-	-	-	-	-	-	-	-	-	-	-	-
103	519	519	36.0	48	112	48	12.5	178	147	14	118	8,000	1.5
104	1220	1220	38.3	77	203	102	12.4	533	394	24	308	6,000	1.2
105	2192	2192	43.5	133	166	166	12.5	930	778	-	651	6,860	1.5
106	518	518	56.4	-	17	156	12.7	208	259	52	183	10,000+	1.3
107	6	6	60.0	-	-	3	12.5	2	3	-	2	3,000	1.0
108	28	28	37.5	8	4	-	12.0	8	8	-	8	8,000	1.0
109	39	39	27.4	11	6	-	12.0	17	11	-	-	4,000	.5
110	-	-	-	-	-	-	-	-	-	-	-	-	-
111	-	-	-	-	-	-	-	-	-	-	-	-	-
112	210	210	24.0	-	63	42	12.5	42	47	-	47	10,000+	1.5
113	1220	1220	45.0	56	167	223	12.3	501	412	24	352	6,680	1.6
114	85	85	47.5	-	-	-	12.2	60	38	-	38	8,000	1.5
115	2882	2882	48.8	316	281	703	12.2	738	1230	105	773	6,820	1.2
116	-	-	-	-	-	-	-	-	-	-	-	-	-
117	26	26	65.0+	-	-	26	12.7	9	17	-	17	3,000	1.0
118	-	-	-	-	-	-	-	-	-	-	-	-	-
119	-	-	-	-	-	-	-	-	-	-	-	-	-
120	68	-	20.0	17	11	-	9.5	34	17	-	9	4,000	1.0
121	4445	89	32.5	538	968	323	8.4	1972	1434	36	699	2,960	.6
122	3545	1524	37.3	358	680	394	11.6	1217	1289	107	716	3,300	.9
123	669	669	18.3	116	189	44	11.4	175	189	29	116	5,260	1.5
124	111	111	55.0	-	-	-	12.5	84	37	-	37	7,000	1.5
125	-	-	-	-	-	-	-	-	-	-	-	-	-
126	561	561	27.3	62	87	-	11.5	212	162	12	150	8,000	1.5
127	-	-	-	-	-	-	-	-	-	-	-	-	-
128	2772	-	19.4	401	837	101	11.1	2074	640	-	448	4,500	1.1
129	4907	-	36.3	111	1076	706	10.9	2412	1873	180	848	3,440	.5
130	1264	1264	47.8	90	181	271	12.5	451	605	214	355	4,840	1.1
131	2462	1945	37.0	167	434	334	12.2	1034	978	-	471	3,880	.9
132	1445	1445	65.0+	-	161	761	12.4	442	881	159	481	3,220	.6

<u>ZONE</u>	<u>POPULATION</u>	<u>WHITE</u>	<u>AGE</u>	<u>UNDER 5</u>	<u>5-15</u>	<u>OVER 65</u>	<u>EDUCATION</u>	<u>LABOR FORCE</u>	<u>DWELLING UNITS</u>	<u>VACANCIES</u>	<u>OWNED</u>	<u>INCOME</u>	<u>AUTOS</u>
166	367	367	35.8	24	83	12	12.7	201	142	-	118	7,180	1.5
167	1970	1970	47.3	106	211	422	12.3	844	774	38	563	4,840	1.3
168	273	273	38.7	20	61	61	12.4	81	103	10	41	4,500	1.0
169	1365	1365	37.9	58	262	232	13.6	378	556	87	408	10,000+	1.4
170	21	21	45.0	-	7	4	12.0	4	7	-	4	2,000	1.0
171	1452	1452	19.3	330	242	22	12.3	484	397	-	397	7,680	1.5
172	527	527	44.9	70	35	193	11.7	88	202	-	187	3,120	.8
173	1661	1661	25.0	200	333	133	11.4	466	582	91	399	5,580	1.3
174	1606	1606	18.7	149	594	-	12.6	572	435	-	385	8,000	1.6
175	1364	1364	19.4	152	433	87	12.3	368	303	-	281	8,000	1.5
176	2394	2394	33.5	120	518	359	12.6	756	896	143	753	7,180	1.2
177	516	516	46.8	16	63	78	12.5	250	219	31	172	4,680	1.4
178	3702	3702	43.4	214	534	463	12.7	1495	1246	70	1104	7,260	1.8
179	65	65	20.0	9	9	-	7.0	41	13	-	-	4,000	1.5
180	8	8	13.8	2	2	-	12.5	2	2	-	2	6,000	1.5
181	734	734	27.0	107	132	76	12.1	229	226	-	202	7,200	1.6
182	1295	1295	25.7	102	356	127	12.3	457	457	25	406	5,760	1.5
183	1012	1012	19.5	113	322	16	12.6	225	245	-	227	6,380	1.4
184	884	884	20.4	186	155	31	12.0	233	243	-	168	6,000	1.2
185	990	990	28.8	45	109	155	13.5	397	232	16	199	10,000+	2.3
186	-	-	-	-	-	-	-	-	-	-	-	-	-
187	-	-	-	-	-	-	-	-	-	-	-	-	-
188	2384	2384	40.4	214	356	320	12.6	818	854	-	818	5,000	1.5
189	2900	2900	17.5	415	968	173	12.6	730	837	75	687	5,000	1.5
190	593	593	25.6	52	145	40	12.5	197	197	-	197	6,320	1.6
191	1273	1273	23.7	57	323	57	12.7	437	304	19	247	8,000	2.5
192	65	65	48.3	-	7	20	13.0	20	13	-	13	10,000+	2.5
193	1258	1258	35.8	99	247	148	12.5	444	456	26	380	5,000	1.4
194	2419	2419	52.9	-	262	719	12.7	719	1290	214	971	6,000	1.5
195	105	105	30.0	18	18	-	9.0	53	35	-	18	4,000	1.5
196	436	436	26.6	28	130	-	12.2	130	109	10	86	10,000+	1.7
197	410	410	34.9	35	102	57	9.8	102	120	-	120	4,340	1.1
198	1707	1707	41.2	35	350	419	12.1	594	683	102	510	3,800	1.4

<u>ZONE</u>	<u>POPULATION</u>	<u>WHITE</u>	<u>AGE</u>	<u>UNDER 5</u>	<u>5-15</u>	<u>OVER 65</u>	<u>EDUCATION</u>	<u>LABOR FORCE</u>	<u>DWELLING UNITS</u>	<u>VACANCIES</u>	<u>OWNED</u>	<u>INCOME</u>	<u>AUTOS</u>
199	1855	1855	32.2	91	397	183	12.0	701	649	32	487	6,160	1.4
200	1685	1685	42.4	101	201	403	12.1	470	673	67	505	3,020	1.4
201	1806	1806	56.4	35	213	603	12.2	497	841	38	762	4,720	1.3
202	811	811	56.8	-	68	204	12.0	340	386	23	340	4,000	1.3
203	2860	2860	54.2	74	223	1151	10.1	817	1337	74	1114	4,000	1.0
204	4315	4315	65.0+	247	205	2260	12.3	781	2205	326	1601	4,520	1.1
205	769	769	61.4	85	-	312	12.2	255	515	86	258	2,720	1.1
206	220	220	7.5	88	44	-	7.0	44	44	-	-	4,000	1.0
207	495	495	49.9	58	72	160	12.2	87	217	15	202	1,860	1.3
208	300	300	65.0+	-	-	199	9.8	101	75	38	37	5,000	2.0
209	604	604	29.9	84	140	98	10.5	155	203	-	203	3,500	1.2
210	2278	2278	46.6	157	354	629	12.8	511	884	73	772	3,340	1.2
211	25	25	37.5	-	-	-	12.5	10	5	-	5	3,000	2.0
212	-	-	-	-	-	-	-	-	-	-	-	-	-
213	2254	2254	25.9	208	730	348	12.9	765	659	-	522	5,000	1.3
214	2852	2852	47.7	285	317	854	12.3	760	1354	72	1097	3,820	1.1
215	3484	3484	57.8	106	211	1091	12.2	1267	1654	106	1302	4,280	1.3
216	108	108	17.5	31	15	-	10.0	31	27	-	14	1,000	1.0
217	63	63	29.5	11	11	-	10.5	32	21	-	21	8,000	1.0
218	419	419	12.4	60	179	-	5.7	119	93	-	-	1,000	2.5
219	914	914	18.7	112	263	38	12.6	225	261	-	237	7,980	1.8
220	304	304	30.0	39	79	49	14.3	49	98	-	88	10,000+	1.9
221	-	-	-	-	-	-	-	-	-	-	-	-	-
222	1730	1730	42.0	88	205	293	13.0	587	597	-	552	8,760	1.7
223	2288	1350	53.3	369	629	148	12.1	664	738	74	332	3,760	1.1
224	454	454	65.0	32	65	227	12.4	113	238	31	197	5,000	.9
225	854	854	65.0+	-	-	440	10.2	193	387	45	295	2,260	1.0
226	382	382	64.3	-	17	183	12.2	67	216	17	150	3,000	.9
227	116	116	24.0	-	15	-	7.0	44	29	-	-	1,000	1.0
228	-	-	-	-	-	-	-	-	-	-	-	-	-
229	96	96	12.5	21	31	-	10.5	21	24	12	-	5,000	2.0
230	88	88	65.0	-	-	44	7.7	23	35	-	35	7,000	2.0
231	1877	1877	22.4	313	370	142	12.3	540	526	-	526	6,520	1.3

<u>ZONE</u>	<u>POPULATION</u>	<u>WHITE</u>	<u>AGE</u>	<u>UNDER 5</u>	<u>5-15</u>	<u>OVER 65</u>	<u>EDUCATION</u>	<u>LABOR FORCE</u>	<u>DWELLING UNITS</u>	<u>VACANCIES</u>	<u>OWNED</u>	<u>INCOME</u>	<u>AUTOS</u>
232	891	891	32.8	83	187	124	12.1	311	290	21	249	7,520	1.8
233	3425	3425	42.3	296	480	850	12.5	1108	1344	109	1123	5,000	1.4
234	417	417	57.9	-	46	154	12.9	139	211	15	153	4,754	1.2
235	12	12	35.0	-	-	-	10.5	6	6	-	-	1,000	1.0
236	147	147	17.5	37	37	-	13.0	55	42	-	21	2,000	1.0
237	170	170	60.0	-	-	-	7.0	170	70	35	35	7,000	2.0
238	118	118	40.0	-	40	-	12.5	78	59	29	30	10,000+	1.0
239	96	96	24.0	-	12	12	12.3	24	43	-	43	6,000	1.0
240	2161	2161	40.8	129	387	484	11.5	743	1076	80	919	2,880	1.3
241	98	98	63.5	-	-	42	11.4	14	56	9	42	4,980	1.3
242	236	236	23.7	52	26	26	10.5	104	59	-	29	4,000	1.5
243	-	-	-	-	-	-	-	-	-	-	-	-	-
244	32	-	17.5	12	-	-	6.3	12	8	-	4	5,000	1.0
245	93	93	60.0	-	-	32	10.5	61	37	-	19	7,000	1.0
246	462	462	65.0	-	72	231	11.4	58	262	18	207	3,860	1.2
247	60	60	15.0	-	30	-	10.5	18	20	-	10	5,000	1.5
248	1	1	65.0+	-	-	1	7.0	-	1	-	1	1,000	1.0
249	688	688	46.2	21	101	122	12.0	244	402	95	307	4,200	1.4
250	1568	1568	42.8	134	234	400	12.4	400	644	68	505	3,380	1.2
251	341	341	61.0	-	24	146	12.4	85	130	-	111	3,000	1.4
252	90	-	36.5	-	-	-	7.0	24	30	15	-	1,000	-
253	45	45	20.0	-	8	-	9.0	30	15	8	-	3,000	1.0
254	21	21	47.5	-	-	-	12.3	7	14	-	7	6,000	.5
255	100	100	65.0+	-	-	67	12.5	33	30	-	15	8,000	1.0
256	555	555	39.1	85	113	157	12.3	157	199	16	138	6,000	1.3
257	4702	2821	34.1	315	1125	719	12.1	1573	1287	194	941	4,000	1.1
258	153	153	56.6	-	9	54	12.0	54	88	17	63	3,500	1.0
259	263	226	36.1	18	35	-	7.5	123	105	18	35	3,000	1.2
260	306	211	19.2	26	79	-	6.7	136	377	-	22	3,920	.9
261	60	60	46.2	-	-	-	12.5	34	17	-	17	8,000	2.5
262	66	66	22.5	22	-	11	12.5	11	22	-	11	3,000	1.0
263	10	10	22.5	-	-	-	12.0	6	7	3	-	9,000	2.0
264	9	9	13.7	1	4	-	12.5	2	3	-	3	9,000	1.5

<u>ZONE</u>	<u>POPULATION</u>	<u>WHITE</u>	<u>AGE</u>	<u>UNDER 5</u>	<u>5-15</u>	<u>OVER 65</u>	<u>EDUCATION</u>	<u>LABOR FORCE</u>	<u>DWELLING UNITS</u>	<u>VACANCIES</u>	<u>OWNED</u>	<u>INCOME</u>	<u>AUTOS</u>
265	-	-	-	-	-	-	-	-	-	-	-	-	-
266	245	245	29.3	16	55	24	12.0	87	79	8	63	5,680	1.6
267	2098	2098	41.6	155	350	466	12.4	661	822	82	663	5,760	1.4
268	290	290	62.5	-	-	97	12.7	-	135	-	135	4,000	1.0
269	2	2	36.5	-	-	-	10.5	2	1	-	-	3,000	1.0
270	135	135	27.4	15	46	15	16.2	30	45	-	45	10,000+	2.0
271	256	256	26.2	44	66	7	14.5	80	74	7	63	10,000+	1.7
272	63	63	12.5	17	17	-	12.0	23	21	-	21	6,000	2.0
273	26	26	55.0	-	-	-	14.5	13	13	-	13	7,000	1.5
274	2415	2415	26.2	193	676	193	14.0	805	644	32	612	9,660	1.7
275	815	815	65.0+	-	-	601	13.0	172	472	-	472	4,200	1.0
276	776	-	40.0	-	-	-	7.0	776	110	55	-	3,000	1.0
277	110	110	30.0	-	22	22	9.0	66	44	22	-	3,000	1.0
278	9	9	13.7	-	3	-	13.0	3	2	-	1	6,000	1.0
279	231	231	9.1	63	84	-	6.3	42	42	-	21	5,000	1.0
280	62	62	65.0+	-	-	47	6.3	-	31	-	31	3,000	1.0
281	-	-	-	-	-	-	-	-	-	-	-	-	-
282	2228	2228	39.5	128	514	642	13.2	385	791	-	707	8,440	1.2
283	1020	1020	57.5	-	94	371	12.8	232	510	-	324	10,000+	1.3
284	248	164	35.0	-	42	42	10.0	248	60	-	-	3,000	1.0
285	184	184	12.5	38	76	-	12.5	38	128	64	64	3,000	2.0
286	536	536	42.5	79	63	158	13.0	110	219	17	152	8,400	1.1
287	18	18	22.5	4	2	-	14.5	5	6	-	6	5,000	4.0
288	1614	1614	57.4	71	143	536	12.6	357	580	-	519	6,840	1.1
289	863	863	41.2	67	176	243	12.8	176	355	23	112	3,500	1.1
290	1234	494	56.7	107	107	349	12.2	350	457	27	296	2,820	1.1
291	599	599	64.9	23	23	301	12.7	184	324	-	208	6,000	1.2
292	637	637	65.0	35	53	318	16.1	53	283	-	230	8,800	1.1
293	598	598	26.6	68	136	95	12.5	122	163	-	149	6,000	1.1
294	2592	-	31.5	160	560	200	7.5	1199	758	76	400	3,000	1.1
295	650	540	19.0	54	217	-	6.7	271	273	109	-	3,500	.7
296	826	826	35.0	103	52	129	12.4	232	284	-	258	5,000	1.5
297	110	110	65.0	-	-	55	16.0	55	55	-	55	10,000+	1.5

<u>ZONE</u>	<u>POPULATION</u>	<u>WHITE</u>	<u>AGE</u>	<u>UNDER 5</u>	<u>5-15</u>	<u>OVER 65</u>	<u>EDUCATION</u>	<u>LABOR FORCE</u>	<u>DWELLING UNITS</u>	<u>VACANCIES</u>	<u>OWNED</u>	<u>INCOME</u>	<u>AUTOS</u>
298	459	459	27.4	83	56	70	12.1	56	139	-	139	6,000	1.3
299	2562	231	14.4	456	851	-	8.1	973	654	-	399	3,560	.8
300	2570	1208	27.5	352	352	211	11.3	986	880	70	528	3,300	1.0
301	1111	1111	47.9	99	147	344	12.3	246	471	-	324	3,000	1.2
302	32	32	65.0+	-	-	24	12.0	16	16	-	16	6,000	1.5
303	52	52	14.0	-	26	-	12.5	17	13	6	7	9,000	1.0
304	288	288	12.5	32	128	-	14.5	96	64	-	32	9,000	1.5
305	638	638	47.5	59	39	213	12.9	116	252	20	174	8,680	1.2
306	252	-	36.5	-	63	32	7.3	158	63	-	-	1,000	1.0
307	54	54	20.8	18	-	-	11.3	18	12	-	-	6,000	1.0
308	-	-	-	-	-	-	-	-	-	-	-	-	-
309	72	72	60.0	-	-	36	12.5	18	36	-	36	6,000	1.0
310	150	150	51.6	-	-	60	12.6	30	75	8	60	1,500	1.4
311	110	-	50.0	-	28	-	7.0	83	55	-	-	1,000	.5
312	450	243	11.5	115	156	16	6.8	115	90	-	8	1,820	.7
313	-	-	-	-	-	-	-	-	-	-	-	-	-
314	32	-	13.7	7	11	-	10.5	7	7	-	-	1,000	1.0
315	-	-	-	-	-	-	-	-	-	-	-	-	-
316	1079	1079	51.8	25	175	175	12.7	226	445	25	391	10,000+	1.3
317	-	-	-	-	-	-	-	-	-	-	-	-	-
318	63	-	60.0	-	-	-	7.0	42	21	-	-	1,000	.5
319	-	-	-	-	-	-	-	-	-	-	-	-	-
320	-	-	-	-	-	-	-	-	-	-	-	-	-
321	455	455	52.4	44	44	147	12.6	74	191	29	103	5,170	1.4
322	5	5	65.0+	-	-	5	7.0	-	3	-	3	1,000	1.0
323	1489	1489	54.9	67	132	496	12.9	298	650	34	655	5,956	1.2
324	176	176	7.5	66	44	-	14.5	44	44	-	22	8,000	1.5
325	-	-	-	-	-	-	-	-	-	-	-	-	-
326	-	-	-	-	-	-	-	-	-	-	-	-	-
327	136	136	24.0	-	11	11	11.3	34	45	9	23	4,000	1.5
328	-	-	-	-	-	-	-	-	-	-	-	-	-
329	888	888	46.6	20	141	222	12.6	202	351	-	328	3,800	1.2
330	50	50	65.0+	-	-	34	14.5	-	27	-	27	9,000	1.0

<u>ZONE</u>	<u>POPULATION</u>	<u>WHITE</u>	<u>AGE</u>	<u>UNDER 5</u>	<u>5-15</u>	<u>OVER 65</u>	<u>EDUCATION</u>	<u>LABOR FORCE</u>	<u>DWELLING UNITS</u>	<u>VACANCIES</u>	<u>OWNED</u>	<u>INCOME</u>	<u>AUTOS</u>
331	285	285	15.0	60	84	-	7.2	96	95	37	58	3,340	1.0
332	18	18	19.0	9	-	-	12.2	9	4	-	-	2,000	1.5
333	104	104	62.4	-	-	35	12.5	35	73	37	-	7,000	1.0
334	606	606	33.2	13	175	54	12.7	149	212	-	194	5,800	1.2
335	820	820	46.8	25	124	149	13.0	173	249	66	183	10,000+	1.5
336	1005	1005	49.9	79	53	371	13.0	344	410	45	293	5,500	1.3
337	22	22	65.0+	-	-	22	12.7	-	11	-	11	5,000	.5
338	719	79	19.3	88	220	88	7.6	176	176	-	147	2,580	1.1
339	26	26	44.5	-	-	13	12.5	-	26	13	13	3,000	1.0
340	1208	1208	58.1	48	165	424	12.8	283	555	-	495	9,100	1.2
341	52	52	30.0	7	7	-	6.5	33	13	-	-	5,000	1.0
342	-	-	-	-	-	-	-	-	-	-	-	-	-
343	2052	2052	39.9	114	418	608	12.4	381	763	114	649	4,780	1.5
344	1449	1449	61.5	-	97	580	12.9	97	644	-	580	10,000+	1.3
345	1004	1004	28.0	209	174	87	12.1	400	317	-	124	5,060	.9
346	52	52	49.9	3	5	5	13.0	14	52	5	29	5,340	1.1
347	48	48	65.0	-	-	24	12.5	-	48	24	24	3,000	1.0
348	213	213	56.6	8	24	66	14.1	33	135	-	135	10,000+	2.1
349	403	403	32.5	52	93	31	16.2	73	188	14	160	10,000+	1.7
350	225	176	42.5	-	-	58	12.1	107	98	19	40	3,500	1.0
351	497	497	44.0	20	50	109	12.8	199	284	85	170	10,000+	-
352	634	634	48.0	25	63	139	12.8	254	362	98	181	10,000+	-
353	793	793	50.0	32	79	174	12.8	317	453	131	154	10,000+	-
354	4	4	50.0	-	-	1	12.8	-	2	-	-	10,000+	-
355	511	511	50.0	20	51	112	12.8	204	292	91	99	10,000+	-
356	522	522	55.0	21	52	115	12.8	209	298	80	92	10,000+	-
357	966	966	53.0	39	97	213	12.8	386	552	160	177	10,000+	-
358	399	399	55.0	16	40	88	12.8	160	228	71	80	10,000+	-
359	221	221	54.0	9	22	49	12.8	88	126	52	52	10,000+	-
360	102	102	55.0	4	10	22	12.8	41	58	24	24	10,000+	-
361	-	-	-	-	-	-	-	-	-	-	-	-	-
362	42	42	54.0	2	4	9	12.8	17	24	10	10	10,000+	-
363	410	410	54.0	16	41	90	12.8	164	234	96	96	10,000+	-

<u>ZONE</u>	<u>POPULATION</u>	<u>WHITE</u>	<u>AGE</u>	<u>UNDER 5</u>	<u>5-15</u>	<u>OVER 65</u>	<u>EDUCATION</u>	<u>LABOR FORCE</u>	<u>DWELLING UNITS</u>	<u>VACANCIES</u>	<u>OWNED</u>	<u>INCOME</u>	<u>AUTOS</u>
364	28	28	54.0	1	3	6	12.8	11	16	7	7	10,000+	-
365	688	688	57.0	28	69	151	12.8	275	393	189	117	10,000+	-
366	305	305	56.0	12	31	67	-	122	174	103	47	10,000+	-
367	86	86	56.0	3	9	19	-	34	49	29	13	10,000+	-
368	30	30	56.0	1	3	7	-	12	17	10	5	10,000+	-
369	189	189	52.0	8	19	42	-	76	108	38	66	10,000+	-
370	257	257	47.0	10	26	57	-	103	147	63	81	10,000+	-
371	1216	1216	57.0	49	122	268	-	486	695	188	407	10,000+	-
372	609	609	52.0	24	61	134	-	244	348	143	181	10,000+	-
373	700	700	60.0	28	70	154	-	280	400	68	332	10,000+	-
374	394	394	56.0	16	39	87	-	158	225	54	131	10,000+	-
375	340	340	56.0	14	34	75	-	136	194	47	113	10,000+	-
376	67	67	48.0	3	7	15	-	27	38	28	9	10,000+	-
377	63	63	48.0	3	6	14	-	25	36	9	25	10,000+	-
378	310	310	48.0	12	31	68	-	124	177	34	133	10,000+	-
379	123	123	47.0	5	12	27	-	49	70	11	39	10,000+	-
380	373	373	47.0	15	37	82	-	149	213	34	117	10,000+	-
381	586	586	43.0	23	59	129	12.8	234	335	101	208	10,000+	-

SUMMARY OF POPULATION AND HOUSEHOLD CHARACTERISTICS

<u>CHARACTERISTIC</u>	<u>NUMBER</u>	<u>PERCENT</u>
Population ¹	276,038	
White	238,060	86%
Non-White	37,978	14%
Male	131,670	48%
Female	144,368	52%
Under 5 Years Old	22,719	8%
5-15 Years	50,659	18%
Over 65 Years	46,117	17%
Median Age ²	35.8	
In Labor Force	91,568	
Employed	88,546	97%
Unemployed	3,022	3%
Dwelling Units ¹	100,846	
Vacancies ³	8,852	9%
Occupied Units	91,994	
Single	77,091	84%
Duplex	4,968	5%
Multiple	7,084	8%
Other	2,851	3%
Rent	18,498	20%
Own	73,496	80%
Median Family Income ²	\$5,384	
Mean No. of Cars ²	1.26	
Population Per Unit	2.74	
Population Per Occupied Unit	3.00	

¹ Population and Dwelling Units are for the area included in Traffic Zones 1-381. The estimates for the entire County are: Population - 306,578; Dwelling Units - 111,026.

² Calculated on Data for Zones 1-350 Only.

³ Vacancy Rate for Zones 1-350 is 7%.

Data in this table was compiled from information gathered in the home interview survey and is based on SIC divisions as follows:

COMMERCIAL: Wholesale Trade; Retail Trade; Finance, Insurance, and Real Estate; and Services.
INDUSTRIAL: Fisheries; Mining; Contract Construction; Manufacturing; Transportation; and Communication.
OTHER: Agriculture; Forestry; Federal, State, and Local Government; Public Utilities; and Nonclassifiable.

population and household characteristics

employment by zone of residence

employment by zone of employment

school enrollment

tourist accommodations

commercial and industrial square footage

retail sales

land area

LABOR FORCE BY ZONE OF RESIDENCE

<u>ZONE</u>	<u>TOTAL</u>	<u>COMMERCIAL</u>	<u>INDUSTRIAL</u>	<u>OTHER</u>
002	2	-	2	-
003	27	18	-	9
004	16	16	-	-
005	304	125	179	-
006	522	290	174	58
007	50	25	25	-
010	18	18	-	-
011	247	139	46	62
012	101	-	87	14
014	102	23	79	-
015	467	49	344	74
016	96	-	-	96
017	75	54	11	10
018	89	59	-	30
019	89	30	59	-
020	155	65	52	38
021	9	9	-	-
026	8	-	4	4
030	16	-	16	-
035	48	-	35	13
036	92	31	31	30
040	106	39	58	9
041	113	68	34	11
042	40	-	40	-
043	7	7	-	-
044	6	2	4	-
045	4	-	2	2
046	482	115	344	23
047	96	64	32	-
048	309	22	243	44
049	9	9	-	-
050	22	-	22	-
051	8	8	-	-
052	210	97	113	-
053	93	62	31	-
056	23	8	13	2
057	142	43	99	-
058	27	-	27	-
059	57	38	19	-
061	638	150	508	30
062	448	212	236	-
063	649	108	505	36
064	725	377	348	-
065	17	9	8	-
066	145	72	73	-
067	558	239	292	27
068	12	-	-	12
070	75	38	37	-
071	118	48	48	22
072	74	22	52	-
073	9	-	-	9
075	120	90	30	-
076	1453	671	485	297
081	2278	854	902	522
082	1022	417	568	37
083	255	146	109	-

LABOR FORCE BY ZONE OF RESIDENCE

-2-

<u>ZONE</u>	<u>TOTAL</u>	<u>COMMERCIAL</u>	<u>INDUSTRIAL</u>	<u>OTHER</u>
084	465	120	116	229
085	317	127	190	-
086	22	-	22	-
087	643	440	136	67
088	3	-	1	2
089	1042	667	292	83
090	271	170	101	-
091	430	265	99	66
093	774	422	164	188
094	1194	941	72	181
095	40	-	40	-
096	43	43	-	-
097	146	73	55	18
098	5	2	3	-
099	800	566	166	68
103	178	113	48	17
104	534	203	229	102
105	830	565	199	66
106	194	146	32	16
107	2	-	2	-
108	8	-	8	-
109	17	-	11	6
112	21	-	21	-
113	501	250	83	168
114	65	39	13	13
115	703	492	141	70
117	9	9	-	-
120	34	28	-	6
121	1864	1434	215	215
122	1182	859	143	180
123	160	58	29	73
124	84	29	55	-
126	212	137	62	13
128	2039	702	301	1036
129	2189	1521	334	334
130	451	181	135	135
131	1053	632	316	105
132	442	361	81	-
133	67	34	-	33
134	134	45	-	89
135	24	24	-	-
136	407	174	233	-
137	656	285	285	86
138	2293	1120	815	358
139	94	-	94	-
140	6	6	-	-
141	312	139	139	34
142	384	148	177	59
143	1418	816	355	247
144	523	349	140	34
145	692	198	362	132
146	646	359	251	36
147	31	-	-	31
148	85	51	34	-
151	10	10	-	-
152	1035	678	286	71

LABOR FORCE BY ZONE OF RESIDENCE

-3-

<u>ZONE</u>	<u>TOTAL</u>	<u>COMMERCIAL</u>	<u>INDUSTRIAL</u>	<u>OTHER</u>
153	965	631	186	148
154	9	-	-	9
155	1305	1023	247	35
156	45	23	-	22
157	34	-	34	-
158	38	-	-	38
159	179	74	74	31
160	371	159	212	-
161	579	277	227	75
162	341	171	122	48
163	4	1	1	2
164	596	345	126	125
166	201	118	71	12
167	844	563	246	35
168	71	40	10	21
169	349	291	58	-
170	4	4	-	-
171	484	198	264	22
172	88	18	70	-
173	466	200	200	66
174	572	382	190	-
175	368	195	130	43
176	716	676	40	-
177	235	141	78	16
178	1495	748	605	142
179	41	25	-	16
180	2	1	1	-
181	229	92	137	-
182	457	254	203	-
183	209	48	48	113
184	233	140	78	15
185	397	309	88	-
188	818	641	142	35
189	720	396	252	72
190	203	81	68	54
191	437	323	95	19
192	20	13	7	-
193	419	345	49	25
194	719	523	33	163
195	53	35	-	18
196	130	83	37	10
197	102	23	57	22
198	594	315	105	174
199	746	357	325	64
200	443	253	95	95
201	448	299	37	112
202	330	212	118	-
203	817	669	148	-
204	740	493	206	41
205	248	248	-	-
206	44	-	-	44
207	86	43	43	-
208	101	101	-	-
209	136	12	74	50
210	478	74	257	147
211	10	10	-	-

LABOR FORCE BY ZONE OF RESIDENCE

-4-

<u>ZONE</u>	<u>TOTAL</u>	<u>COMMERCIAL</u>	<u>INDUSTRIAL</u>	<u>OTHER</u>
213	695	452	208	35
214	728	570	158	-
215	1232	950	211	71
216	24	12	-	12
217	32	-	21	11
218	119	-	-	119
219	225	56	112	57
220	49	29	20	-
222	580	336	183	61
223	627	406	111	110
224	113	65	16	32
225	193	83	110	-
226	67	33	34	-
227	33	11	-	22
229	24	12	-	12
230	18	18	-	-
231	484	256	199	29
232	311	249	21	41
233	1087	579	326	182
234	139	62	-	77
235	6	-	-	6
236	60	20	40	-
237	170	85	85	-
238	59	-	-	59
239	24	-	12	12
240	646	291	291	64
241	14	14	-	-
242	116	58	-	58
244	12	-	-	12
245	63	32	-	31
246	43	29	14	-
247	18	6	6	6
249	244	143	82	19
250	400	234	166	-
251	85	49	-	36
252	24	-	-	24
253	23	23	-	-
254	7	-	-	7
255	33	-	33	-
256	141	64	64	13
257	1302	764	225	313
258	54	36	-	18
259	123	35	18	70
260	152	3	-	149
261	34	-	26	8
262	11	-	-	11
263	6	-	-	6
264	2	-	-	2
266	87	32	40	15
267	661	467	194	-
269	1	-	-	1
270	30	30	-	-
271	80	51	7	22
272	23	17	6	-
273	13	7	-	6
274	741	451	193	97

LABOR FORCE BY ZONE OF RESIDENCE

-5-

<u>ZONE</u>	<u>TOTAL</u>	<u>COMMERCIAL</u>	<u>INDUSTRIAL</u>	<u>OTHER</u>
275	172	129	-	43
276	776	35	-	741
277	66	-	-	66
278	3	-	-	3
279	42	-	21	21
282	370	288	-	82
283	232	185	47	-
284	248	-	-	248
286	110	32	32	46
287	9	6	3	-
288	357	250	83	24
289	140	105	35	-
290	322	269	27	26
291	163	82	81	-
292	53	35	-	18
293	122	41	41	40
294	1110	777	222	111
295	217	54	-	163
296	232	77	26	129
297	55	28	27	-
298	56	14	28	14
299	873	550	194	129
300	986	704	176	106
301	246	99	147	-
302	16	-	-	16
303	10	-	10	-
304	96	96	-	-
305	116	59	39	18
306	158	-	-	158
307	18	-	-	18
309	18	18	-	-
310	26	7	-	19
311	83	-	-	83
312	115	8	-	107
314	7	-	-	7
316	213	118	71	24
318	41	-	-	41
321	74	30	44	-
323	295	164	65	66
324	32	32	-	-
327	49	24	25	-
329	202	121	61	20
331	96	12	-	84
332	9	-	-	9
333	31	31	-	-
334	167	152	-	15
335	173	149	24	-
336	344	239	53	52
338	147	88	-	59
340	283	212	48	23
341	26	7	-	19
343	381	305	38	38
344	97	97	-	-
345	383	226	35	122
346	14	10	4	-
348	42	42	-	-

LABOR FORCE BY ZONE OF RESIDENCE

-6-

<u>ZONE</u>	<u>TOTAL</u>	<u>COMMERCIAL</u>	<u>INDUSTRIAL</u>	<u>OTHER</u>
349	73	52	21	-
350	82	74	-	8
351	199	96	36	67
352	254	122	46	86
353	317	152	57	108
355	204	98	37	69
356	209	100	38	71
357	386	185	69	132
358	160	77	28	55
359	88	42	16	30
360	41	20	7	14
362	17	8	3	6
363	164	79	30	55
364	11	5	2	4
365	275	132	50	93
366	122	59	22	41
367	34	16	6	12
368	12	6	2	4
369	76	36	14	26
370	103	49	19	35
371	486	233	87	166
372	244	117	44	83
373	280	134	50	96
374	158	76	28	54
375	136	65	24	47
376	27	13	5	9
377	25	12	5	8
378	124	60	22	42
379	49	24	9	16
380	149	72	27	50
381	234	11	42	181
<hr/>				
TOTAL STUDY AREA:	89,235	49,065	25,191	14,979

population and household characteristics

employment by zone of residence

employment by zone of employment

school enrollment

tourist accommodations

commercial and industrial square footage

retail sales

land area

Information for this table was gathered from various sources including the Florida State Employment Service, Palm Beach County Industrial Service, and Palm Beach County Board of Public Instruction. Data is categorized in the same manner as in the table "Employment By Zone Of Residence".

EMPLOYMENT BY ZONE OF EMPLOYMENT

<u>ZONE</u>	<u>COMMERCIAL</u>	<u>INDUSTRIAL</u>	<u>OTHER</u>
001	-	160	22
002	-	17	15
003	-	-	105
005	-	-	70
006	114	-	2
007	72	130	-
008	175	-	-
010	-	-	23
011	41	-	3
012	67	-	-
013	150	-	-
014	5	-	48
015	170	-	5
016	46	13	-
017	41	-	-
018	21	-	1
020	46	17	53
021	-	-	58
024	-	5500	30
025	-	-	93
026	-	-	44
035	10	125	-
036	26	-	-
040	5	-	-
041	21	-	-
042	-	-	24
043	5	-	75
046	21	-	-
048	57	-	-
049	36	-	-
050	-	-	120
052	-	107	-
053	21	-	-
054	5	-	-
055	10	-	82
056	-	2127	38
057	5	-	9
058	-	-	59
059	15	-	35
061	57	-	-
063	124	-	21
064	72	-	137
065	-	-	4
066	93	-	76
067	289	-	-
068	-	-	307
070	46	-	-
071	5	-	12
072	5	-	1
073	46	97	-
074	36	35	-
075	330	-	-
076	640	82	63
077	98	-	-
079	5	122	-

EMPLOYMENT BY ZONE OF EMPLOYMENT

-2-

<u>ZONE</u>	<u>COMMERCIAL</u>	<u>INDUSTRIAL</u>	<u>OTHER</u>
081	77	-	27
082	397	-	46
083	382	-	-
084	26	-	201
085	10	98	2
086	21	-	-
087	10	-	19
088	77	478	40
089	753	226	226
090	433	60	-
091	119	-	428
092	-	27	-
093	-	-	4
094	98	-	23
095	38	-	-
096	46	528	-
097	110	-	-
098	10	-	500
099	320	27	7
101	5	28	-
102	21	-	-
103	-	-	247
104	-	-	19
105	516	-	60
106	31	-	48
108	-	-	3
109	-	-	29
112	-	725	17
113	-	-	52
114	1011	45	-
115	877	260	18
120	-	-	37
121	160	544	27
122	982	900	38
123	83	46	56
124	315	83	-
125	-	38	-
126	-	27	-
127	-	33	-
128	72	-	34
129	464	266	34
130	531	894	52
131	640	686	116
132	7088	355	730
133	10	33	113
134	-	31	17
135	5	28	5
136	31	-	3
137	160	-	2
138	841	53	164
139	237	45	-
140	26	-	-
141	124	93	59
142	186	886	-
143	470	649	4

EMPLOYMENT BY ZONE OF EMPLOYMENT

-3-

<u>ZONE</u>	<u>COMMERCIAL</u>	<u>INDUSTRIAL</u>	<u>OTHER</u>
144	876	827	81
145	21	53	2
146	175	83	54
147	15	-	22
148	160	-	-
149	-	67	565
150	37	-	123
151	-	120	-
152	103	573	2
153	129	390	72
154	382	135	-
155	836	156	53
156	-	-	179
157	-	-	22
158	-	-	13
159	-	-	2
161	62	20	16
162	72	62	2
163	-	67	-
164	110	-	38
165	330	-	-
166	67	20	-
167	372	-	5
168	243	743	-
169	77	201	51
172	57	-	7
173	93	-	57
174	103	-	-
175	5	-	3
176	15	8	13
177	52	498	-
178	433	501	35
179	10	-	49
180	-	-	4
181	15	-	24
182	41	-	-
183	41	-	-
184	217	-	-
185	5	-	36
186	-	-	59
187	728	-	-
188	273	-	38
189	57	-	-
190	-	-	268
192	-	-	5
193	-	160	4
194	583	-	18
195	57	-	51
196	5	-	78
198	216	75	38
199	310	-	27
200	325	-	1
201	165	-	1
202	26	440	3
203	46	173	19

EMPLOYMENT BY ZONE OF EMPLOYMENT

-4-

<u>ZONE</u>	<u>COMMERCIAL</u>	<u>INDUSTRIAL</u>	<u>OTHER</u>
204	645	60	89
205	1208	82	390
206	-	55	166
207	5	-	-
208	5	-	12
209	15	5	5
210	112	38	26
211	-	166	121
213	15	-	-
214	162	138	187
215	356	295	87
216	31	-	87
217	-	-	17
218	-	-	54
219	15	32	18
220	10	-	37
222	5	-	2
223	57	-	28
224	26	-	7
225	408	27	-
226	402	-	-
227	-	-	310
228	-	-	62
229	-	-	98
230	5	-	30
231	5	-	4
232	36	-	6
233	294	-	93
234	139	-	-
235	-	-	64
236	-	-	44
237	5	-	14
238	5	-	78
240	57	-	200
241	31	-	4
242	46	-	274
243	-	-	48
244	-	-	71
245	5	-	15
246	5	-	34
247	10	-	5
249	10	-	17
250	31	-	-
251	21	-	7
252	-	27	48
253	-	-	20
254	-	-	20
256	21	218	-
257	372	107	193
258	93	-	7
259	5	-	274
260	21	-	56
261	5	15	30
262	5	-	41
264	-	-	37

EMPLOYMENT BY ZONE OF EMPLOYMENT

-5-

<u>ZONE</u>	<u>COMMERCIAL</u>	<u>INDUSTRIAL</u>	<u>OTHER</u>
265	-	-	-
266	15	-	-
267	67	15	17
268	186	-	7
269	-	-	3
270	-	-	17
273	201	8	20
274	382	63	123
275	72	-	2
276	41	-	469
277	-	-	135
278	-	-	60
279	-	-	6
280	15	-	16
282 ✓	152	-	185
283 ✓	402	-	71
284	-	-	116
285	5	-	-
286 ✓	103	-	4
288 ✓	-	-	216
289 ✓	929	-	-
290 ✓	612	270	204
291 ✓	820	-	-
292 ✓	15	-	13
293 ✓	36	80	1
294 ✓	181	8	54
295	26	27	109
296 ✓	21	75	248
297 ✓	5	-	-
298 ✓	62	80	1
299 ✓	41	-	36
300 ✓	155	216	1
301 ✓	196	83	1
302 ✓	5	-	8
303 ✓	-	45	-
305 ✓	150	-	73
306	-	-	237
307	-	-	373
308	-	-	26
309 ✓	-	7	-
310 ✓	77	13	20
311	-	-	479
312	-	-	154
313	21	35	42
316	98	7	71
317	-	-	67
318	-	-	60
319	-	-	35
321	5	-	-
322	15	261	-
323	52	-	3
326	-	-	442
327	5	-	23
328	103	110	-
329	103	-	-

EMPLOYMENT BY ZONE OF EMPLOYMENT

-6-

<u>ZONE</u>	<u>COMMERCIAL</u>	<u>INDUSTRIAL</u>	<u>OTHER</u>
330	62	-	1
331	-	-	223
332	-	-	29
334	-	-	31
335	-	-	35
336	191	-	-
337	268	1007	-
338	655	-	6
339	1213	42	235
340	232	-	-
341	-	-	129
342	-	-	27
344	15	-	35
345	31	-	28
346	304	-	-
347	57	-	-
348	-	-	48
349	-	-	67
350	573	-	10
351	-	-	101
352	-	-	192
353	470	-	160
354	346	-	-
355	46	-	150
356	124	-	105
357	1378	-	212
358	5	-	81
359	-	-	45
360	-	-	21
362	-	-	8
363	15	-	83
364	52	-	6
365	5	-	139
366	5	-	62
367	-	-	17
368	-	-	6
369	15	-	38
370	5	-	52
371	46	-	-
372	5	-	132
373	103	-	142
374	124	-	80
375	-	-	69
376	-	-	13
377	5	-	13
378	10	-	63
379	5	-	25
380	5	-	75
381	5	-	119
<u>TOTALS:</u>	<u>45,242</u>	<u>25,813</u>	<u>18,180</u>

population and household characteristics

employment by zone of residence

employment by zone of employment

school enrollment

This table indicates the number of students attending school as of April, 1965, in all traffic zones in which at least one public or private school is located. Kindergartens are excluded from the data unless they offer elementary schooling.

Enrollment figures were obtained from the Palm Beach County Board of Public Instruction and from certain private schools.

tourist accommodations

commercial and industrial square footage

retail sales

land area

SCHOOL ENROLLMENT

<u>ZONE</u>	<u>ENROLLMENT</u>	<u>ZONE</u>	<u>ENROLLMENT</u>
020	1438	277	587
056	876	282 ✓	2369
057	170	290 ✓	775
063	533	292 ✓	316
064	771	294 ✓	1504
066	1284	299 ✓	990
076	553	318	225
081	761	319	220
082	1274	326	1418
087	529	327	638
088	1122	334	851
089	1351	338	175
093	113	345	810
094	629	350	306
103	73	352	85
104	524	355	245
105	1170	357	469
120	1017	372	29
121	765		
122	190		
123	975		
128	946		
129	958		
130	264		
131	3229		
132	316		
138	3007		
143	29		
144	98		
149	85		
152	65		
153	2001		
161	397		
164	790		
169	962		
173	1601		
176	362		
181	661		
186	1651		
188	554		
193	110		
198	1048		
199	745		
203	521		
204	673		
211	3345		
214	3052		
215	438		
223	769		
233	1275		
249	402		
257	2006		
262	38		
267	471		
274	79		
		TOTAL:	61,078

5954

population and household characteristics

employment by zone of residence

employment by zone of employment

school enrollment

tourist accommodations

commercial and industrial square footage

retail sales

land area

Data in this table indicates by Traffic Zone the number of Hotel-Motel and Tourist Apartment Units (Not Rooms) as reported by the Florida State Hotel and Restaurant Commission as of April 15, 1965.

TOURIST ACCOMMODATIONS

ZONE	HOTEL-MOTEL UNITS	TOURIST APT. UNITS	TOTAL UNITS
007	40	-	40
013	11	-	11
014	-	18	18
015	-	6	6
016	-	4	4
017	50	4	54
020	7	-	7
022	50	-	50
036	53	-	53
041	277	9	286
048	86	73	159
059	28	-	28
067	-	12	12
076	12	103	115
081	-	53	53
082	58	38	96
083	67	111	178
084	284	139	423
087	-	4	4
088	22	-	22
089	58	90	148
090	109	81	190
091	430	344	774
094	-	23	23
099	-	98	98
104	-	11	11
105	90	92	182
106	32	9	41
107	-	5	5
115	266	196	462
121	-	141	141
122	26	343	369
129	-	192	192
130	-	141	141
131	306	443	749
132	1046	548	1594
138	-	21	21
141	-	9	9
142	-	3	3
143	-	190	190
144	-	149	149
145	7	-	7
146	16	-	16
152	-	20	20
153	19	-	19
155	67	323	390
164	-	51	51
166	10	6	16
167	-	14	14
168	-	50	50
169	41	29	70
178	12	16	28
188	145	-	145
193	-	11	11
194	112	44	156

TOURIST ACCOMMODATIONS

-2-

ZONE	HOTEL-MOTEL UNITS	TOURIST APT. UNITS	TOTAL UNITS
198	18	20	38
199	-	7	7
200	25	37	62
201	-	6	6
202	6	11	17
203	-	62	62
204	131	364	495
205	238	204	442
207	19	-	19
209	9	15	24
210	7	57	64
213	10	77	87
214	-	124	124
215	334	690	1024
220	24	-	24
223	24	53	77
224	65	43	108
225	21	55	76
226	34	46	80
232	-	11	11
233	-	47	47
234	18	27	45
240	-	25	25
251	91	20	111
257	-	110	110
258	22	-	22
267	-	38	38
268	25	8	33
273	47	2	49
275	73	7	80
276	126	-	126
283	152	84	236
288	-	22	22
289	148	84	232
290	63	45	108
291	17	180	197
292	37	72	109
294	16	22	38
299	-	16	16
300	-	84	84
301	36	61	97
305	34	12	46
310	33	4	37
321	-	31	31
323	-	11	11
327	-	17	17
328	-	6	6
329	131	-	131
335	-	1	1
336	86	65	151
338	60	50	110
339	8	4	12
346	62	12	74
347	-	134	134
350	35	17	52

TOURIST ACCOMMODATIONS

-3-

ZONE	HOTEL-MOTEL UNITS	TOURIST APT. UNITS	TOTAL UNITS
353	1333	361	1694
354	350	-	350
355	461	28	489
356	66	210	276
357	608	363	971
358	100	47	147
362	17	-	17
363	414	96	510
364	130	-	130
365	80	-	80
366	118	-	118
369	-	4	4
370	35	61	96
371	-	263	263
372	82	138	220
373	80	133	213
374	186	790	976
375	-	191	191
376	24	-	24
377	-	38	38
378	32	59	91
379	9	14	23
380	680	4	684
381	-	45	45
<hr/>			
TOTAL STUDY AREA:	10,927	10,312	21,239

population and household characteristics

employment by zone of residence

employment by zone of employment

school enrollment

tourist accommodations

commercial and industrial square footage

retail sales

land area

Figures in this table are hundreds of square feet of floor area of Commercial and Industrial establishments. Data was collected by scaling building sizes from 1" - 200' Aerial Photographs.

RETAIL AND INDUSTRIAL SQUARE FOOTAGE
(100's Of Square Feet)

<u>ZONE</u>	<u>RETAIL</u>	<u>INDUSTRIAL</u>	<u>ZONE</u>	<u>RETAIL</u>	<u>INDUSTRIAL</u>
001	-	688	091	392	-
002	-	128	092	-	64
006	376	-	094	320	-
007	236	304	095	1552	-
008	576	-	096	160	1116
011	140	-	097	656	-
012	228	-	098	42	-
013	496	-	099	1066	63
014	16	-	101	19	67
015	560	-	102	63	-
016	152	32	105	1706	-
017	140	-	106	100	-
018	72	-	112	-	1430
020	156	40	114	3362	105
023	-	464	115	2908	606
024	-	5600	121	536	1269
035	28	76	122	3173	1235
036	84	-	123	144	-
040	16	-	124	1036	196
041	68	-	128	246	-
043	16	-	129	1536	620
046	64	-	130	1892	2085
048	196	-	131	2130	1599
049	116	-	132	44172	825
052	-	248	133	36	76
053	72	-	135	12	12
054	20	-	136	100	-
055	36	-	137	532	-
056	-	2740	138	2796	124
057	20	-	139	1313	104
059	56	-	140	86	-
061	184	-	141	409	-
063	416	-	142	622	2065
064	232	-	143	1561	1514
066	312	-	144	3926	2162
067	960	-	145	68	-
070	160	-	146	580	-
071	16	-	147	44	-
072	12	-	148	528	-
073	160	224	149	-	156
074	116	80	151	-	280
075	1092	-	152	351	1336
076	2124	192	153	431	910
077	332	-	154	1268	316
079	20	284	155	2775	363
081	256	-	161	208	48
082	1316	-	162	232	144
083	1272	-	164	260	-
084	84	-	165	1088	-
085	28	512	166	220	48
086	60	-	167	1231	-
087	40	-	168	264	2287
088	252	996	169	799	468
089	2496	528	172	196	-
090	1440	140	173	316	-

RETAIL AND INDUSTRIAL SQUARE FOOTAGE
(100's Of Square Feet)

-2-

<u>ZONE</u>	<u>RETAIL</u>	<u>INDUSTRIAL</u>	<u>ZONE</u>	<u>RETAIL</u>	<u>INDUSTRIAL</u>
174	340	-	249	32	-
175	20	-	250	108	-
176	52	19	251	68	-
177	175	1161	252	-	64
178	1529	1167	256	60	508
179	36	-	257	1236	248
181	48	-	258	312	-
182	140	-	259	20	-
183	136	-	260	68	-
184	724	-	261	24	36
185	16	-	262	8	-
187	2419	-	266	52	-
188	908	-	267	216	36
189	180	-	268	624	-
193	-	372	273	664	20
194	1940	-	274	164	-
195	196	-	275	236	-
196	12	-	276	132	-
198	324	-	280	48	-
199	1032	-	282	76	-
200	1072	-	283	1344	-
201	552	-	285	8	-
202	80	1024	286	336	-
203	148	404	289	3084	-
204	2144	140	290	2360	732
205	6752	192	291	2724	-
206	-	120	292	44	-
207	24	-	293	124	188
208	12	-	294	592	20
209	52	12	295	80	64
210	196	-	296	76	176
213	44	-	297	16	-
214	212	208	298	204	188
215	1180	688	299	132	-
216	100	-	300	516	504
219	56	72	301	644	196
220	32	-	302	16	-
222	12	-	303	-	104
223	192	-	305	492	-
224	80	-	309	-	16
225	1352	64	310	256	32
226	1332	-	313	68	80
230	16	-	316	320	16
231	20	-	321	16	-
232	120	-	322	48	608
233	984	-	323	168	-
234	460	-	327	16	-
237	24	-	328	336	256
238	20	-	329	348	-
240	192	-	330	200	-
241	100	-	335	-	300
242	160	-	336	640	-
245	16	-	337	888	2348
246	12	-	338	2176	-
247	36	-	339	4028	96

RETAIL AND INDUSTRIAL SQUARE FOOTAGE
(100's Of Square Feet)

-3-

<u>ZONE</u>	<u>RETAIL</u>	<u>INDUSTRIAL</u>
340	776	-
344	52	-
345	100	-
346	1004	-
347	192	-
350	1896	-
353	1556	-
354	1148	-
355	148	-
356	412	-
357	4576	-
358	12	-
363	56	-
364	176	-
365	8	-
366	12	-
369	44	-
370	12	-
371	148	-
372	8	-
373	344	-
374	408	-
377	12	-
378	28	-
379	12	-
380	12	-
381	12	-
<hr/>		<hr/>

TOTAL: 174,406 49,448

population and household characteristics

employment by zone of residence

employment by zone of employment

school enrollment

tourist accommodations

commercial and industrial square footage

retail sales

land area

The dollar figures reported in this table are based on information reported in the 1963 Census of Business: Retail Trade. No adjustment has been made to update Retail Sales to the date of this report, April 1965.

RETAIL SALES

<u>ZONE</u>	<u>RETAIL SALES</u> (1000's of Dollars)	<u>ZONE</u>	<u>RETAIL SALES</u> (1000's of Dollars)
006	898	097	1,571
007	564	098	87
008	1,378	099	2,158
011	334	101	49
012	545	102	131
013	1,185	105	3,449
014	38	106	240
015	1,340	114	6,784
016	362	115	5,868
017	334	121	1,079
018	174	122	7,861
020	371	123	343
035	66	124	2,478
036	202	128	490
040	38	129	3,106
041	165	130	4,495
043	38	131	4,299
046	155	132	91,080
048	470	133	85
049	277	135	28
053	174	136	240
054	47	137	1,274
055	85	138	6,075
057	47	139	2,672
059	116	140	180
061	442	141	834
063	997	142	1,259
064	477	143	3,155
066	748	144	10,623
067	1,975	145	165
070	381	146	1,387
071	38	147	103
072	28	148	1,265
073	330	152	703
074	239	153	866
075	2,251	154	2,566
076	4,369	155	5,607
077	683	161	498
079	47	162	555
081	531	164	621
082	2,726	165	2,626
083	2,635	166	527
084	175	167	2,485
085	66	168	539
086	146	169	1,618
087	84	172	470
088	524	173	757
089	5,171	174	813
090	2,984	175	47
091	941	176	98
094	663	177	360
095	3,216	178	3,825
096	331	179	85

RETAIL SALES

-2

<u>ZONE</u>	<u>RETAIL SALES</u> (1000's of Dollars)	<u>ZONE</u>	<u>RETAIL SALES</u> (1000's of Dollars)
181	113	259	47
182	334	260	165
183	324	261	56
184	1,735	262	19
185	38	266	126
187	4,888	267	519
188	1,831	268	1,507
189	433	273	1,606
194	7,042	274	397
195	470	275	573
196	28	276	315
198	776	280	113
199	2,469	282	197
200	2,567	283	3,469
201	1,321	285	19
202	206	286	804
203	379	289	10,422
204	5,917	290	6,089
205	18,984	291	7,852
207	56	292	114
208	28	293	321
209	122	294	1,527
210	470	295	193
213	103	296	183
214	543	297	45
215	3,441	298	528
216	240	299	341
219	137	300	1,331
220	75	301	1,662
222	29	302	38
223	494	305	2,090
224	206	310	662
225	2,989	313	165
226	2,945	316	385
230	38	321	19
231	47	322	58
232	287	323	203
233	2,176	327	19
234	1,017	328	405
237	56	329	420
238	47	330	241
240	464	336	772
241	240	337	1,071
242	381	338	2,622
245	38	339	4,854
246	28	340	935
247	85	344	63
249	78	345	120
250	262	346	1,210
251	164	347	232
256	146	350	4,600
257	3,001	353	5,455
258	758		

RETAIL SALES

- 3 -

<u>ZONE</u>	<u>RETAIL SALES</u> (1000's of Dollars)
354	4,024
355	519
356	1,444
357	16,038
358	43
363	199
364	616
365	18
366	27
369	103
370	28
371	353
372	19
373	886
374	1,052
377	15
378	34
379	15
380	15
381	43

TOTAL: \$396,896

population and household characteristics

employment by zone of residence

employment by zone of employment

school enrollment

tourist accommodations

commercial and industrial square footage

retail sales

land area

Total, vacant, and occupied land acreage is given for each Traffic Zone as well as a detailed listing of the various land uses included in the occupied area. These measurements were made from 1" - 200' Aerial Photographs flown in February, 1965, in conjunction with detailed land use data.

	<u>001</u>	<u>002</u>	<u>003</u>	<u>004</u>	<u>005</u>	<u>006</u>	<u>007</u>	<u>008</u>	<u>009</u>	<u>010</u>
RESIDENTIAL										
Single Family		2.8	14.7	22.1	174.0	118.0	31.1		2.1	8.5
Two Family						9.2			2.8	
Resident Apartment					1.8	3.2	.5		3.7	
Other										
TOURIST ACCOMMODATIONS:										
Transient Apartment										
Hotel										
Motel							3.0			
Other										
TOTAL RESIDENTIAL ACRES	-	2.8	14.7	22.1	175.8	130.4	34.6	-	8.6	8.5
COMMERCIAL:										
Retail and Personal Service						7.4	5.3	3.7		
Office and Business Service						.9	1.4	.9		
Other										
INDUSTRIAL	188.6	6.4					4.6			
INSTITUTIONAL					7.4	7.4	53.4			.7
AMUSEMENT		138.0			103.5					
TOTAL NON-RESIDENTIAL	188.6	144.4	-	-	110.9	15.7	64.7	4.6	-	.7
UTILITIES						3.5	2.3			
TRANSPORTATION:										
Streets	65.3	242.9	168.6	17.3	81.0	85.8	48.3	4.6	17.3	24.8
Terminals										
Parking					.9	2.8	2.1	2.5		
Other	23.5	6.2				7.0	4.8			
AGRICULTURE	230.0	154.6	1090.2	13.8		19.3				239.2
WATER			50.3	121.4	289.8	98.9	70.2		65.8	
TOTAL OTHER ACRES	318.8	403.7	1309.1	152.5	371.7	217.3	127.7	7.1	83.1	264.0
TOTAL OCCUPIED AREA	507.4	550.9	1323.8	174.6	658.4	363.4	227.0	11.7	91.7	273.2
VACANT	7187.0	10990.8	6851.6	601.0	562.4	733.2	251.4	3.3	59.2	840.0
TOTAL AREA	7694.4	11541.7	8175.4	775.6	1220.8	1096.6	478.4	15.0	150.9	1113.2

	<u>011</u>	<u>012</u>	<u>013</u>	<u>014</u>	<u>015</u>	<u>016</u>	<u>017</u>	<u>018</u>	<u>019</u>	<u>020</u>
RESIDENTIAL										
Single Family	84.0	103.8	3.3	73.6	78.3	13.9	16.2	17.9	14.7	27.4
Two Family	1.6	.7			9.4	1.2	.6			9.2
Resident Apartment					2.1	1.8	.7			
Other					2.3					
TOURIST ACCOMMODATIONS:										
Transient Apartment							.8			
Hotel										
Motel			1.6							
Other										
TOTAL RESIDENTIAL ACRES	85.6	104.5	4.9	73.6	92.1	16.9	18.3	17.9	14.7	36.6
COMMERCIAL:										
Retail and Personal Service		1.2	2.3	1.8	10.8	4.1	8.7	1.6		4.4
Office and Business Service			.7				.4			.2
Other										
INDUSTRIAL						.5				1.2
INSTITUTIONAL		1.6	69.3		4.9		.5	2.1	1.4	34.5
AMUSEMENT	9.2			6.8			17.3			
TOTAL NON-RESIDENTIAL	9.2	2.8	72.3	8.6	15.7	4.6	26.9	3.7	1.4	40.3
UTILITIES					.6					
TRANSPORTATION:										
Streets	51.1	50.4	15.0	14.5	78.7	25.8	40.7	35.2	15.2	53.8
Terminals										
Parking			.6	.7	1.1	1.0	3.4			.3
Other		1.7	2.2		1.7	3.1				5.9
AGRICULTURE	31.3				3.9		3.5	6.0	6.2	5.8
WATER	40.3	334.0	39.1	28.5	1.7	53.4	94.1	28.8	3.5	
TOTAL OTHER ACRES	122.7	386.1	56.9	43.7	87.7	83.3	141.7	70.0	24.9	65.8
TOTAL OCCUPIED AREA	217.5	493.4	134.1	125.9	195.5	104.8	186.9	91.6	41.0	142.7
VACANT	958.3	324.5	11.3	5.7	373.1	105.0	336.6	1292.1	958.1	864.7
TOTAL AREA	1175.8	817.9	145.4	131.6	568.6	209.8	523.5	1383.7	999.1	1007.4

	<u>021</u>	<u>022</u>	<u>023</u>	<u>024</u>	<u>025</u>	<u>026</u>	<u>027</u>	<u>028</u>	<u>029</u>	<u>030</u>
RESIDENTIAL										
Single Family	29.9					2.3				5.1
Two Family	1.6									
Resident Apartment	2.8									
Other										
TOURIST ACCOMMODATIONS:										
Transient Apartment										
Hotel		1.8								
Motel										
Other										
TOTAL RESIDENTIAL ACRES	34.3	1.8	-	-	-	2.3	-	-	-	5.1
COMMERCIAL:										
Retail and Personal Service										
Office and Business Service										
Other										
INDUSTRIAL			574.1	115.0						
INSTITUTIONAL	13.8	12.4	7680.0	3840.0						8.3
AMUSEMENT		17.7			7.4					
TOTAL NON-RESIDENTIAL	13.8	30.1	8254.1	3955.0	7.4	-	-	-	-	8.3
UTILITIES	2.3									
TRANSPORTATION:										
Streets	44.7	49.5		17.0	100.1	143.2	13.8		3.5	27.6
Terminals										
Parking	.9	1.7								
Other	5.9			23.2	29.4	17.9			3.1	3.1
AGRICULTURE				314.6	961.4	456.0				
WATER	105.8	48.8		17.0	11.0	157.0				2.5
TOTAL OTHER ACRES	159.6	100.0	-	371.8	1101.9	774.1	13.8	-	6.6	33.2
TOTAL OCCUPIED AREA	207.7	131.9	8254.1	4326.8	1109.3	776.4	13.8	-	6.6	46.6
VACANT	627.7	735.7	2005.1	4650.1	10111.8	14933.1	530.8	633.9	652.1	667.4
TOTAL AREA	835.4	867.6	10259.2	8976.9	11221.1	15709.5	544.6	633.9	658.7	714.0

	<u>031</u>	<u>032</u>	<u>033</u>	<u>034</u>	<u>035</u>	<u>036</u>	<u>037</u>	<u>038</u>	<u>039</u>	<u>040</u>
RESIDENTIAL										
Single Family					25.8	9.3				46.5
Two Family					4.6	.9				.7
Resident Apartment						.6				
Other										
TOURIST ACCOMMODATIONS										
Transient Apartment						2.3				
Hotel						9.7				
Motel						1.4				
Other										
TOTAL RESIDENTIAL ACRES	-	-	-	-	30.4	24.2	-	-	-	47.2
COMMERCIAL:										
Retail and Personal Service					7.8	1.5				1.6
Office and Business Service					.3					
Other										
INDUSTRIAL					23.0					
INSTITUTIONAL										
AMUSEMENT										
TOTAL NON-RESIDENTIAL	-	-	-	-	31.1	1.5	-	-	-	1.6
UTILITIES										
TRANSPORTATION:										
Streets	29.8	51.8	5.9	3.5	29.7	27.6	13.2	10.4	23.0	31.1
Terminals										
Parking						1.2				
Other				2.8	2.8			5.9	5.9	
AGRICULTURE										
WATER	25.1				24.0	16.6			9.7	15.0
TOTAL OTHER ACRES	54.9	51.8	5.9	6.3	56.5	45.4	13.2	16.3	38.6	46.1
TOTAL OCCUPIED AREA	54.9	51.8	5.9	6.3	118.0	71.1	13.2	16.3	38.6	94.9
VACANT	629.6	273.0	710.8	615.7	798.3	610.6	690.6	713.3	850.1	633.7
TOTAL AREA	684.5	324.8	716.7	622.0	916.3	681.7	703.8	729.6	888.7	728.6

	<u>041</u>	<u>042</u>	<u>043</u>	<u>044</u>	<u>045</u>	<u>046</u>	<u>047</u>	<u>048</u>	<u>049</u>	<u>050</u>
RESIDENTIAL										
Single Family	42.0	34.0	2.3	3.2	2.3	95.7	36.5	84.8	2.2	24.3
Two Family	1.4							5.8		
Resident Apartment								2.1	.9	
Other								2.8		
TOURIST ACCOMMODATIONS:										
Transient Apartment	2.3							.7		
Hotel	5.3									
Motel	4.9							4.4		
Other										
TOTAL RESIDENTIAL ACRES	55.9	34.0	2.3	3.2	2.3	95.7	36.5	100.6	3.1	24.3
COMMERCIAL:										
Retail and Personal Service	.8		.6			1.8		3.7	7.8	
Office and Business Service								.5	.5	
Other										
INDUSTRIAL										
INSTITUTIONAL	1.5		6.0					.5		.9
AMUSEMENT	2.1		120.5			2.3		9.2		172.0
TOTAL NON-RESIDENTIAL	4.4	-	127.1	-	-	4.1	-	13.9	8.3	172.9
UTILITIES						4.6				
TRANSPORTATION:										
Streets	52.9	22.1	15.0	31.9	8.3	56.0	19.3	43.0	11.5	32.5
Terminals										
Parking	1.4		.7						.7	.7
Other					6.6	2.8				
AGRICULTURE				12.9	3.7					
WATER	14.5	16.6		3.2	10.0	9.2	25.4	21.7	22.1	172.5
TOTAL OTHER ACRES	68.8	38.7	15.7	48.0	28.6	72.6	44.7	64.7	34.3	205.7
TOTAL OCCUPIED AREA	129.1	72.7	145.1	51.2	30.9	172.4	81.2	179.2	45.7	402.9
VACANT	449.6	192.3	65.6	996.7	1407.1	233.3	149.8	158.4	137.4	303.7
TOTAL AREA	578.7	265.0	210.7	1047.9	1438.0	405.7	231.0	337.6	183.1	706.6

	<u>051</u>	<u>052</u>	<u>053</u>	<u>054</u>	<u>055</u>	<u>056</u>	<u>057</u>	<u>058</u>	<u>059</u>	<u>060</u>
RESIDENTIAL										
Single Family	7.5	36.8	16.6	.2	8.7	19.1	81.9	7.7	28.3	
Two Family			1.5			7.7	1.4			
Resident Apartment			1.2				2.8		2.5	
Other		6.2	6.7	.7						
TOURIST ACCOMMODATIONS:										
Transient Apartment			.9							
Hotel										
Motel			1.6						1.8	
Other										
TOTAL RESIDENTIAL ACRES	7.5	43.0	28.5	.9	8.7	26.8	86.1	7.7	32.6	-
COMMERCIAL:										
Retail and Personal Service			2.5	.6		4.8	1.2		2.5	
Office and Business Service					.7					
Other										
INDUSTRIAL		11.7				46.5				
INSTITUTIONAL	3.9		.7	16.6	3.7	12.2	19.7	6.7	.9	
AMUSEMENT					540.0	5.5	10.1	123.1	12.7	
TOTAL NON-RESIDENTIAL	3.9	11.7	3.2	17.2	544.4	69.0	31.0	129.8	16.1	-
UTILITIES			.5			9.2				
TRANSPORTATION:										
Streets	9.5	27.6	9.0	6.1	57.5	42.6	48.3	11.7	34.5	24.2
Terminals										
Parking					9.2	6.9	2.1	2.3	4.1	
Other	2.0					4.1	4.1			
AGRICULTURE										
WATER		11.5	11.5	78.2			18.4	16.1	96.6	512.4
TOTAL OTHER ACRES	11.5	39.1	21.0	84.3	66.7	62.8	72.9	30.1	135.2	536.6
TOTAL OCCUPIED AREA	22.9	93.8	52.7	102.4	619.8	158.6	190.0	167.6	183.9	536.6
VACANT	620.2	513.4	93.6	188.3	368.3	349.2	783.4	59.6	104.1	241.7
TOTAL AREA	643.1	607.2	146.3	290.7	988.1	507.8	973.4	227.2	288.0	778.3

	<u>061</u>	<u>062</u>	<u>063</u>	<u>064</u>	<u>065</u>	<u>066</u>	<u>067</u>	<u>068</u>	<u>069</u>	<u>070</u>
RESIDENTIAL										
Single Family	30.1	107.0	149.5	133.4	7.4	127.9	39.1	.9		86.0
Two Family			5.8	.9		10.0	10.1			
Resident Apartment			1.5				11.7			
Other						14.3		2.8		
TOURIST ACCOMMODATIONS:										
Transient Apartment										
Hotel										
Motel						.8				
Other										
TOTAL RESIDENTIAL ACRES	30.1	107.0	156.8	134.3	7.4	153.0	60.9	3.7	-	86.0
COMMERCIAL										
Retail and Personal Service	.7		2.3	1.0		6.3	10.4			6.0
Office and Business Service				.6			.3			
Other										
INDUSTRIAL										
INSTITUTIONAL	2.3		1.8	7.2		17.1	1.5			
AMUSEMENT			16.6	4.4		13.8				
TOTAL NON-RESIDENTIAL	3.0	-	20.7	13.2	-	37.2	12.2	-	-	6.0
UTILITIES	56.1		10.1			13.8				
TRANSPORTATION:										
Streets	25.1	50.4	85.1	58.7	6.9	40.0	73.6		63.1	65.6
Terminals										
Parking	1.4		3.5	1.6		5.9	.8			.9
Other		1.7	1.7			2.5	3.1	6.8	18.1	
AGRICULTURE			18.4					3191.5		
WATER	5.8	12.4	36.8	5.5	62.1	11.0	26.2	73.1	24.4	8.3
TOTAL OTHER ACRES	88.4	64.5	155.6	65.8	69.0	73.2	103.7	3271.4	105.6	74.8
TOTAL OCCUPIED AREA	121.5	171.5	333.1	213.3	76.4	263.4	176.8	3275.1	105.6	166.8
VACANT	1165.6	64.0	65.3	38.8	161.9	181.0	63.3	24749.1	11436.1	1258.3
TOTAL AREA	1287.1	235.5	398.4	252.1	238.3	444.4	240.1	28024.2	11541.7	1425.1

	<u>071</u>	<u>072</u>	<u>073</u>	<u>074</u>	<u>075</u>	<u>076</u>	<u>077</u>	<u>078</u>	<u>079</u>	<u>080</u>
RESIDENTIAL										
Single Family	10.1	18.6	4.3		3.2	311.0	3.7	12.0		
Two Family	15.0	2.8	.3		.9	22.3	.2			
Resident Apartment					1.3	22.8	13.1			
Other										
TOURIST ACCOMMODATIONS:										
Transient Apartment										
Hotel										
Motel						2.5				
Other										
TOTAL RESIDENTIAL ACRES	25.1	21.4	4.6	-	5.4	358.6	17.0	12.0	-	-
COMMERCIAL:										
Retail and Personal Service	.6	5.5	32.2	.9	4.1	32.4	5.5			
Office and Business Service					.6	.5				
Other										
INDUSTRIAL			2.3	3.5		.6			2.3	
INSTITUTIONAL			12.9		.5	16.8				11.0
AMUSEMENT						10.1	10.1			11.0
TOTAL NON-RESIDENTIAL	.6	5.5	47.4	4.4	5.2	60.4	15.6	-	2.3	22.0
UTILITIES		14.7				4.6				
TRANSPORTATION:										
Streets	22.1	17.3	22.8	5.1	10.4	167.0	36.8	12.7	15.2	6.9
Terminals										
Parking			1.2	.9	3.2	10.4	4.9			.2
Other			2.5	1.6	.5	3.7			11.0	
AGRICULTURE	127.0	13.8								
WATER		8.1				16.6	128.8	287.0	46.0	6.2
TOTAL OTHER ACRES	149.1	53.9	26.5	7.6	14.1	202.3	170.5	299.7	72.2	13.3
TOTAL OCCUPIED AREA	174.8	80.8	78.5	12.0	24.7	621.3	203.1	311.7	74.5	35.3
VACANT	375.4	589.9	219.6	14.7	12.1	61.3	126.3	35.1	419.5	449.5
TOTAL AREA	550.2	670.7	298.1	26.7	36.8	682.6	329.4	346.8	494.0	484.8

	<u>081</u>	<u>082</u>	<u>083</u>	<u>084</u>	<u>085</u>	<u>086</u>	<u>087</u>	<u>088</u>	<u>089</u>	<u>090</u>
RESIDENTIAL										
Single Family	92.5	116.2	26.5	51.3	37.3	1.8	52.3	5.1	139.0	30.4
Two Family	13.1	19.8	1.6	3.0	3.9		.5	.7	22.9	6.8
Resident Apartment	7.8	1.5	3.7	25.1				1.4	14.1	8.7
Other		21.9	4.8			4.1			.6	19.8
TOURIST ACCOMMODATIONS:										
Transient Apartment										
Hotel										
Motel		1.4	7.5	8.7				.9	.9	9.5
Other										
TOTAL RESIDENTIAL ACRES	113.4	160.8	44.1	88.1	41.2	5.9	52.8	8.1	177.5	75.2
COMMERCIAL:										
Retail and Personal Service	4.8	6.9	6.7	2.3	1.8	13.3	8.6	12.2	25.2	11.7
Office and Business Service			.3						1.7	.2
Other										
INDUSTRIAL					6.0			10.8	4.4	6.4
INSTITUTIONAL	2.8	13.8					9.7	41.4	22.4	.2
AMUSEMENT	1.4	16.6		13.6	16.1		5.5	3.7	14.0	4.6
TOTAL NON-RESIDENTIAL	9.0	37.3	7.0	15.9	23.9	13.3	23.8	68.1	67.7	23.1
UTILITIES		6.0			2.3					1.7
TRANSPORTATION:										
Streets	31.1	82.8	16.6	51.8	72.2	16.6	42.1	26.9	76.6	27.6
Terminals										
Parking	.6	2.3	4.1	4.8			1.0	4.1	5.5	4.6
Other	4.8	2.8				6.9		8.5	13.3	
AGRICULTURE					23.0					
WATER			66.2	367.1			3.2			39.6
TOTAL OTHER ACRES	36.5	93.9	86.9	423.7	97.5	23.5	46.3	39.5	97.1	71.8
TOTAL OCCUPIED AREA	158.9	292.0	138.0	527.7	162.6	42.7	122.9	115.7	342.3	170.1
VACANT	275.3	79.7	78.2	230.4	1226.6	748.5	384.0	314.9	38.6	83.9
TOTAL AREA	434.2	371.7	216.2	758.1	1389.2	791.2	506.9	430.6	380.9	254.0

	<u>091</u>	<u>092</u>	<u>093</u>	<u>094</u>	<u>095</u>	<u>096</u>	<u>097</u>	<u>098</u>	<u>099</u>	<u>100</u>
RESIDENTIAL										
Single Family	57.5		35.2	94.3			44.2	.8	104.0	
Two Family	1.0			8.3			.9		28.6	
Resident Apartment	15.3		.6	9.4			.6		12.1	
Other					5.1	5.1				
TOURIST ACCOMMODATIONS:										
Transient Apartment	12.9									
Hotel	4.8									
Motel	2.3									
Other										
TOTAL RESIDENTIAL ACRES	93.8	-	35.8	112.0	5.1	5.1	45.7	.8	144.7	-
COMMERCIAL										
Retail and Personal Service	3.5			3.0	7.4	2.8	4.4		10.6	
Office and Business Service								.1	.5	
Other										
INDUSTRIAL		6.9				8.1			.4	
INSTITUTIONAL	11.7		12.0	1.0		1.6	1.4	60.8	2.5	
AMUSEMENT	12.1			.5			33.4		3.0	
TOTAL NON-RESIDENTIAL	27.3	6.9	12.0	4.5	7.4	12.5	39.2	60.9	17.0	-
UTILITIES						23.0				
TRANSPORTATION:										
Streets	47.8	5.2	23.0	50.4	10.4	5.2	34.5	66.2	22.1	20.7
Terminals					3.9	28.1				
Parking	7.2			.8	6.9	.6	.5			
Other		6.2	4.1	2.1	1.4		7.6	2.5	2.5	
AGRICULTURE							3.9			
WATER	252.1	6.2				23.0			62.6	3.5
TOTAL OTHER ACRES	307.1	17.6	27.1	53.3	22.6	79.9	46.5	68.7	87.2	24.2
TOTAL OCCUPIED AREA	428.2	24.5	74.9	169.8	35.1	97.5	131.4	130.4	248.9	24.2
VACANT	88.8	300.3	182.7	44.6	11.9	-	282.6	99.6	73.1	548.0
TOTAL AREA	517.0	324.8	257.6	214.4	47.0	97.5	414.0	230.0	322.0	572.2

	<u>101</u>	<u>102</u>	<u>103</u>	<u>104</u>	<u>105</u>	<u>106</u>	<u>107</u>	<u>108</u>	<u>109</u>	<u>110</u>
RESIDENTIAL										
Single Family			41.9	46.1	70.0	23.1	.9	5.3	7.4	
Two Family				5.9	13.5				.7	
Resident Apartment				.5	9.8					
Other										
TOURIST ACCOMMODATIONS:										
Transient Apartment										
Hotel										
Motel					1.7	.7				
Other										
TOTAL RESIDENTIAL ACRES	-	-	41.9	52.5	95.0	23.8	.9	5.3	8.1	-
COMMERCIAL:										
Retail and Personal Service	2.8				15.2	2.3				
Office and Business Service					1.1					
Other										
INDUSTRIAL	1.3									
INSTITUTIONAL			4.3	10.0	8.5	2.0				
AMUSEMENT			3.6			141.2				
TOTAL NON-RESIDENTIAL	4.1	-	7.9	10.0	24.8	145.5	-	-	-	-
UTILITIES										
TRANSPORTATION:										
Streets	9.3	2.5	30.4	29.3	44.9	64.1	66.1	44.9	5.5	
Terminals										
Parking						1.2				
Other			2.1	3.8	1.7					
AGRICULTURE						446.2		35.0	302.2	
WATER	6.9	15.5	68.8		53.8	55.3	42.8	58.9		2.4
TOTAL OTHER ACRES	16.2	18.0	101.3	33.1	100.4	566.8	108.9	138.8	307.7	2.4
TOTAL OCCUPIED AREA	20.3	18.0	151.1	95.6	220.2	736.1	109.8	144.1	315.8	2.4
VACANT	419.5	226.7	157.1	16.6	12.6	8240.8	7424.3	885.4	225.2	654.5
TOTAL AREA	439.8	244.7	308.2	112.2	232.8	8976.9	7534.1	1029.5	541.0	656.9

	<u>111</u>	<u>112</u>	<u>113</u>	<u>114</u>	<u>115</u>	<u>116</u>	<u>117</u>	<u>118</u>	<u>119</u>	<u>120</u>
RESIDENTIAL										
Single Family		25.2	57.5	4.0	132.2	3.0	8.5			1.2
Two Family			2.6		28.8					
Resident Apartment					15.4					
Other					.3					
TOURIST ACCOMMODATIONS:										
Transient Apartment										
Hotel										
Motel					4.2					
Other										
TOTAL RESIDENTIAL ACRES	-	25.2	60.1	4.0	180.9	3.0	8.5	-	-	1.2
COMMERCIAL:										
Retail and Personal Service				3.4	11.7					
Office and Business Service				.1	5.8					
Other					.2					
INDUSTRIAL		9.5		31.6	3.7					
INSTITUTIONAL		6.2		9.2	4.0					30.8
AMUSEMENT			1.1		10.5	25.8				
TOTAL NON-RESIDENTIAL	-	15.7	1.1	44.3	35.9	25.8	-	-	-	30.8
UTILITIES				13.6	.1					
TRANSPORTATION:										
Streets	-	11.4	26.2	19.7	81.8	23.5	6.9	1.0	3.2	76.9
Terminals					.4					
Parking										
Other		3.8	2.4	2.8	2.9					2.1
AGRICULTURE						8.3	8.7			
WATER	161.6	234.6			66.2	69.0	7.6		40.4	66.0
TOTAL OTHER ACRES	161.6	249.8	28.6	36.1	151.4	100.8	23.2	1.0	43.6	145.0
TOTAL OCCUPIED AREA	161.6	290.7	89.8	84.4	368.2	129.6	31.7	1.0	43.6	177.0
VACANT	334.3	34.1	2.2	9.4	18.2	888.8	110.0	220.7	359.4	108.2
TOTAL AREA	495.9	324.8	92.0	93.8	386.4	1018.4	141.7	221.7	403.0	285.2

	<u>121</u>	<u>122</u>	<u>123</u>	<u>124</u>	<u>125</u>	<u>126</u>	<u>127</u>	<u>128</u>	<u>129</u>	<u>130</u>
RESIDENTIAL										
Single Family	35.1	33.6	43.2	10.1		26.8		91.2	20.7	21.2
Two Family	14.7	16.7	1.2					11.7	17.2	6.9
Resident Apartment	32.9	25.3	.7	.7				1.8	44.6	15.0
Other	.2		4.6						.6	.3
TOURIST ACCOMMODATIONS:										
Transient Apartment										
Hotel										
Motel	.1	1.0								
Other										
TOTAL RESIDENTIAL ACRES	83.0	76.6	49.7	10.8	-	26.8	-	104.7	83.1	43.4
COMMERCIAL:										
Retail and Personal Service	4.1	19.9	8.5	14.7	.2			7.0	9.2	5.6
Office and Business Service	.2	17.6							1.4	2.3
Other										.4
INDUSTRIAL	1.9	9.6		12.7					9.0	7.8
INSTITUTIONAL	9.5	15.4	8.7			12.8		4.9	7.0	5.1
AMUSEMENT	7.1					9.7	35.9			2.3
TOTAL NON-RESIDENTIAL	22.8	62.5	17.2	27.4	.2	22.5	35.9	11.9	26.6	23.5
UTILITIES								4.7	1.7	
TRANSPORTATION:										
Streets	43.5	52.4	40.0	18.6	6.9	24.6	7.9	55.2	56.2	30.7
Terminals	8.6								.4	
Parking			1.0	2.2	1.0	2.0				
Other	5.5	2.8						3.8	10.4	2.4
AGRICULTURE			1.0							
WATER		59.3	27.6	4.6	3.5	14.1	348.0	22.1		47.4
TOTAL OTHER ACRES	57.6	114.5	69.6	25.4	11.4	40.7	355.9	85.8	68.7	80.5
TOTAL OCCUPIED AREA	163.4	253.6	136.5	63.6	11.6	90.0	391.8	202.4	178.4	147.4
VACANT	17.8	1.2	895.7	271.3	287.4	202.6	405.8	142.6	5.1	4.4
TOTAL AREA	181.2	254.8	1032.2	334.9	299.0	292.6	797.6	345.0	183.5	151.8

	<u>131</u>	<u>132</u>	<u>133</u>	<u>134</u>	<u>135</u>	<u>136</u>	<u>137</u>	<u>138</u>	<u>139</u>	<u>140</u>
RESIDENTIAL										
Single Family	15.2	9.6	13.7	17.0	5.5	131.8	161.9	306.8	15.6	1.5
Two Family	13.4	3.8	.2			4.8	10.8	25.9	3.7	2.4
Resident Apartment	17.6	13.5					23.0	15.1		3.3
Other	.1	1.5		6.2	2.8	43.2	10.1		16.6	
TOURIST ACCOMMODATIONS:										
Transient Apartment										
Hotel	1.5	4.5								
Motel										
Other										
TOTAL RESIDENTIAL ACRES	47.8	32.9	13.9	23.2	8.3	179.8	205.8	347.8	35.9	7.2
COMMERCIAL:										
Retail and Personal Service	12.3	41.7	2.3		.2	1.8	15.2	17.5	7.8	1.0
Office and Business Service	1.2	10.7						1.8		
Other	.7									
INDUSTRIAL	4.6	4.2	3.2		3.2			22.5	3.7	
INSTITUTIONAL	25.7	23.6	9.9	9.2			.7	63.6		
AMUSEMENT	8.9	3.2	61.2				27.6	12.7		
TOTAL NON-RESIDENTIAL	53.4	83.4	76.6	9.2	3.4	1.8	43.5	118.1	11.5	1.0
UTILITIES	.8	.9	.2			191.4	7.4			
TRANSPORTATION:										
Streets	39.0	50.7	37.3	49.3	32.1	62.8	81.4	165.6	10.4	5.8
Terminals		.5								
Parking	.3	13.8				.2	1.2	20.2	3.2	
Other	7.9	3.7								
AGRICULTURE			51.5	180.3	50.6	34.5	22.5	9.2		.5
WATER		101.2	55.2	61.2	24.2				4.6	17.3
TOTAL OTHER ACRES	48.0	170.8	144.2	290.8	298.3	97.5	112.5	195.0	18.2	23.6
TOTAL OCCUPIED AREA	149.2	287.1	234.7	323.2	310.0	279.1	361.8	660.9	65.6	31.8
VACANT	12.7	3.6	2195.0	837.8	197.8	505.7	308.9	416.4	164.4	125.5
TOTAL AREA	161.9	290.7	2429.7	1161.0	507.8	784.8	670.7	1077.3	230.0	157.3

	<u>141</u>	<u>142</u>	<u>143</u>	<u>144</u>	<u>145</u>	<u>146</u>	<u>147</u>	<u>148</u>	<u>149</u>	<u>150</u>
RESIDENTIAL										
Single Family	36.8	38.4	110.9	55.3	196.2	145.6	51.8	6.9		
Two Family		12.7	30.2	22.8	6.4	12.7		1.4		
Resident Apartment	.3	4.2	13.2	14.9		6.9				
Other	1.8	1.3		3.4	6.4	8.1				
TOURIST ACCOMMODATIONS:										
Transient Apartment										
Hotel										
Motel										
Other						3.0				
TOTAL RESIDENTIAL ACRES	38.9	56.6	154.3	96.4	209.0	176.3	51.8	8.3	-	-
COMMERCIAL:										
Retail and Personal Service	9.0	6.0	12.7	19.7	1.8	14.1	2.3	2.5		
Office and Business Service		.3	1.4	5.6				.7		
Other		6.6	1.6	1.8						
INDUSTRIAL		11.5	6.1	9.9						8.3
INSTITUTIONAL		3.4	11.5	28.7	17.5	9.5		1.6		
AMUSEMENT			23.6	3.3	49.5	16.1				
TOTAL NON-RESIDENTIAL	9.0	27.8	56.9	69.0	68.8	39.7	2.3	4.8	8.3	-
UTILITIES		4.5		2.9	.7				8.3	
TRANSPORTATION:										
Streets	27.6	40.7	94.2	62.1	110.9	81.4	18.6	11.7	6.9	11.3
Terminals		2.9	.7	.8			62.3	104.9	193.2	563.5
Parking	1.7				.8	1.5		1.8	11.0	6.4
Other		6.6	8.9	3.8						
AGRICULTURE		.7	1.0		26.7					
WATER		.7	11.0	135.2	32.0	10.7		2.8		41.4
TOTAL OTHER ACRES	29.3	56.1	115.8	204.8	171.1	93.6	80.9	121.2	219.4	622.6
TOTAL OCCUPIED AREA	77.2	140.5	327.0	370.2	448.9	309.6	135.0	134.3	227.7	622.6
VACANT	213.5	161.3	33.6	26.3	741.6	336.2	77.5	1.4	331.7	71.1
TOTAL AREA	290.7	301.8	360.6	396.5	1190.5	645.8	212.5	135.7	559.4	693.7

	<u>151</u>	<u>152</u>	<u>153</u>	<u>154</u>	<u>155</u>	<u>156</u>	<u>157</u>	<u>158</u>	<u>159</u>	<u>160</u>
RESIDENTIAL										
Single Family	5.3	161.7	76.1	1.5	97.3	13.6	9.0	9.4	60.5	123.7
Two Family	.5	5.3	9.9	.2	33.5					1.2
Resident Apartment		1.2	17.8	.2	12.0					
Other			2.4		.2	.9				
TOURIST ACCOMMODATIONS:										
Transient Apartment										
Hotel					6.0					
Motel					1.3					
Other										
TOTAL RESIDENTIAL ACRES	5.8	168.2	106.2	1.9	150.3	14.5	9.0	9.4	60.5	124.9
COMMERCIAL:										
Retail and Personal Service	1.5	2.6	2.9	10.7	15.5					
Office and Business Service		1.4	1.0		2.9					
Other	.1	4.9	.4							
INDUSTRIAL	13.8	2.9	9.7	1.4	2.0					
INSTITUTIONAL	4.0	1.7	30.5		.4				3.7	
AMUSEMENT		1.9			3.5					
TOTAL NON-RESIDENTIAL	19.4	15.4	44.5	12.1	24.3	-	-	-	3.7	-
UTILITIES					3.1					
TRANSPORTATION:										
Streets	7.9	81.1	51.8	2.8	70.4	32.4	56.6	27.6	48.3	31.1
Terminals	1.7	2.4								
Parking				.8						
Other	1.0	3.7	4.1	1.2	2.8					
AGRICULTURE					.3	1857.5	230.0	140.1	16.6	
WATER	3.1				95.7	61.5	45.5	24.7	18.6	6.4
TOTAL OTHER ACRES	13.7	87.2	55.9	4.8	172.3	1951.4	332.1	192.4	83.5	37.5
TOTAL OCCUPIED AREA	38.9	270.8	206.6	18.8	346.9	1965.9	341.1	201.8	147.7	162.4
VACANT	40.2	46.6	33.5	7.9	13.7	2522.5	1178.7	1136.8	1065.8	533.1
TOTAL AREA	79.1	317.4	240.1	26.7	360.6	4488.4	1519.8	1338.6	1213.5	695.5

	<u>161</u>	<u>162</u>	<u>163</u>	<u>164</u>	<u>165</u>	<u>166</u>	<u>167</u>	<u>168</u>	<u>169</u>	<u>170</u>
RESIDENTIAL										
Single Family	99.4	86.0	.7	159.4		60.7	92.9	6.5	70.4	5.5
Two Family	3.8	2.2		7.4		6.9	11.6	1.9	12.2	1.4
Resident Apartment		1.4		12.0			2.6	.7	3.9	
Other	26.2						4.8			
TOURIST ACCOMMODATIONS:										
Transient Apartment										
Hotel										
Motel						.8			.8	
Other										
TOTAL RESIDENTIAL ACRES	129.4	89.6	.2	178.8	-	68.4	111.9	9.1	87.3	6.9
COMMERCIAL:										
Retail and Personal Service	9.3	5.2		9.2	4.1	6.4	9.5	2.4	5.7	
Office and Business Service								.5	.5	
Other								.5	.4	
INDUSTRIAL	2.8	4.6				1.5	3.3	8.4	2.2	
INSTITUTIONAL	7.4		17.5	6.1			2.1		15.5	
AMUSEMENT		25.8		4.1			72.2		20.9	
TOTAL NON-RESIDENTIAL	19.5	35.6	17.5	19.4	4.1	7.9	87.1	11.8	45.2	-
UTILITIES		.9								
TRANSPORTATION:										
Streets	62.1	38.0	17.3	62.1	.6	15.9	51.1	19.3	52.4	44.9
Terminals								1.5		
Parking	1.7	.6		.3	11.0					
Other						3.5	2.8	.9	1.8	
AGRICULTURE	14.7	16.1		4.6			53.3			
WATER	10.8	3.5	3.5	8.3		14.7			28.5	
TOTAL OTHER ACRES	89.3	59.1	20.8	75.3	11.6	34.1	107.2	21.7	82.7	44.9
TOTAL OCCUPIED AREA	238.2	184.3	39.0	273.5	15.7	110.4	306.2	42.6	215.2	51.8
VACANT	382.8	265.6	518.5	185.6	25.7	48.8	8.4	.6	53.4	849.8
TOTAL AREA	621.0	449.9	557.5	459.1	41.4	159.2	314.6	43.2	268.6	901.6

	<u>171</u>	<u>172</u>	<u>173</u>	<u>174</u>	<u>175</u>	<u>176</u>	<u>177</u>	<u>178</u>	<u>179</u>	<u>180</u>
RESIDENTIAL										
Single Family	126.0	50.4	137.5	132.3	125.1	120.8	20.4	185.4	1.4	
Two Family		4.6	27.6	5.3	1.8	5.9	2.6	20.1		
Resident Apartment		1.6			3.7	.4	.3	3.8		
Other		10.6		3.5						
TOURIST ACCOMMODATIONS:										
Transient Apartment										
Hotel										
Motel								.3		
Other										
TOTAL RESIDENTIAL ACRES	126.0	67.2	165.1	141.1	130.6	127.1	23.3	209.6	1.4	-
COMMERCIAL:										
Retail and Personal Service		4.6	11.0	6.0	4.1	.5	1.6	11.1	1.6	
Office and Business Service						.4	1.5	1.5		
Other								.4		
INDUSTRIAL						.3	6.1	5.6		
INSTITUTIONAL	.9		16.1	1.8	1.8	33.9		.6		
AMUSEMENT			19.8			75.4				
TOTAL NON-RESIDENTIAL	.9	4.6	46.9	7.8	5.9	110.5	9.2	19.2	1.6	-
UTILITIES				3.7		.9				
TRANSPORTATION:										
Streets	56.6	30.4	75.9	69.0	38.0	60.7	19.0	76.2	38.5	24.2
Terminals							.5			
Parking		.3	9.9	.5	.3					
Other						2.8	2.8	3.2		
AGRICULTURE		75.4			32.2				504.9	42.3
WATER				25.5	4.6			87.4	24.3	166.5
TOTAL OTHER ACRES	56.6	106.1	85.8	98.7	75.1	64.4	22.3	166.8	567.7	233.0
TOTAL OCCUPIED AREA	183.5	177.9	297.8	247.6	211.6	302.0	54.8	395.6	570.7	233.0
VACANT	486.3	397.1	173.2	242.8	119.6	20.9	5.0	46.0	1678.7	1244.5
TOTAL AREA	669.8	575.0	471.0	490.4	331.2	322.9	59.8	441.6	2249.4	1477.5

	<u>181</u>	<u>182</u>	<u>183</u>	<u>184</u>	<u>185</u>	<u>186</u>	<u>187</u>	<u>188</u>	<u>189</u>	<u>190</u>
RESIDENTIAL										
Single Family	42.8	63.1	64.2	47.2	47.2	2.1		156.0	204.0	58.9
Two Family		1.8	.9	6.0				3.8	1.8	
Resident Apartment				1.0						
Other										
TOURIST ACCOMMODATIONS:										
Transient Apartment										
Hotel										
Motel							.4	6.1		
Other										
TOTAL RESIDENTIAL ACRES	42.8	64.9	65.1	54.2	47.2	2.1	.4	165.9	205.8	58.9
COMMERCIAL:										
Retail and Personal Service		6.4	4.6	13.3	.8		26.9	16.9	5.1	
Office and Business Service								.4		
Other										
INDUSTRIAL										
INSTITUTIONAL	5.5		4.6	1.7	2.8	5.3		11.0		14.7
AMUSEMENT	3.7		6.4			201.7				
TOTAL NON-RESIDENTIAL	9.2	6.4	15.6	15.0	3.6	207.0	26.9	28.3	5.1	14.7
UTILITIES	7.4								2.8	1.8
TRANSPORTATION:										
Streets	18.6	51.1	42.8	34.5	36.6	3.8	3.8	78.3	89.7	30.4
Terminals										
Parking	.5			2.1					.5	1.8
Other					3.9	3.8	1.5	1.0		
AGRICULTURE					4.6			3.3	1.8	
WATER	12.4	22.2	17.3	9.2	35.9	5.2	1.0	78.9	28.5	6.9
TOTAL OTHER ACRES	38.9	73.3	60.1	45.8	81.0	12.8	6.3	161.5	123.3	40.9
TOTAL OCCUPIED AREA	90.9	144.6	140.8	115.0	131.8	221.9	33.6	355.7	334.2	114.5
VACANT	558.6	526.1	332.1	40.5	121.2	22.8	17.0	81.3	181.0	212.1
TOTAL AREA	649.5	670.7	472.9	155.5	253.0	244.7	50.6	437.0	515.2	326.6

	<u>191</u>	<u>192</u>	<u>193</u>	<u>194</u>	<u>195</u>	<u>196</u>	<u>197</u>	<u>198</u>	<u>199</u>	<u>200</u>
RESIDENTIAL										
Single Family	177.6	2.8	105.8	186.1	6.9	44.9	12.9	40.3	73.6	115.5
Two Family			.9	10.6	.5			5.8	6.4	5.8
Resident Apartment			.9	1.6	.8	.3		3.3	2.1	6.0
Other								11.0		
TOURIST ACCOMMODATIONS:										
Transient Apartment				.7						
Hotel								2.1		
Motel				4.4						
Other										
TOTAL RESIDENTIAL ACRES	177.6	2.8	107.6	203.4	8.2	45.2	12.9	62.5	82.1	127.3
COMMERCIAL:										
Retail and Personal Service				19.2	2.1	.2		9.7	5.6	12.2
Office and Business Service				.8						
Other										
INDUSTRIAL			9.2							
INSTITUTIONAL			2.1	2.3				8.5	51.5	6.3
AMUSEMENT			23.7	31.7		153.9	3.5	4.4		
TOTAL NON-RESIDENTIAL	-	-	35.0	54.0	2.1	154.1	3.5	22.6	57.1	18.5
UTILITIES			.3					.5		1.8
TRANSPORTATION:										
Streets	51.1	9.0	43.5	127.0	63.1	53.8	27.3	79.4	80.5	61.8
Terminals								1.4	5.3	5.1
Parking				5.4						
Other	1.8	9.2	11.0	6.2						
AGRICULTURE					531.7		12.2	3.2		13.1
WATER	66.0	11.0	10.6	75.7	8.6	27.4	8.5	16.2	16.1	8.4
TOTAL OTHER ACRES	118.9	29.2	65.4	214.3	603.4	81.2	48.0	100.7	101.9	90.2
TOTAL OCCUPIED AREA	296.5	32.0	208.0	471.7	613.7	280.5	64.4	185.8	241.1	236.0
VACANT	72.4	49.9	183.0	114.3	1213.4	884.2	631.1	484.9	255.7	132.0
TOTAL AREA	368.9	81.9	391.0	586.0	1827.1	1164.7	695.5	670.7	496.8	368.0

	<u>201</u>	<u>202</u>	<u>203</u>	<u>204</u>	<u>205</u>	<u>206</u>	<u>207</u>	<u>208</u>	<u>209</u>	<u>210</u>
RESIDENTIAL										
Single Family	64.4	6.4	190.9	237.6	10.4	8.7	153.9	17.5	61.6	195.0
Two Family	1.8	1.4	3.2	47.6	3.3				4.4	10.4
Resident Apartment	1.2	.5	2.8	8.5	6.2					7.2
Other	15.9	22.5				3.1		11.3		5.5
TOURIST ACCOMMODATIONS:										
Transient Apartment				7.1	5.8					
Hotel				.2						
Motel	2.8	.5		.9			.9			1.2
Other										
TOTAL RESIDENTIAL ACRES	86.1	31.3	196.9	301.9	25.7	11.8	154.8	28.8	66.0	219.3
COMMERCIAL:										
Retail and Personal Service	9.9	1.8	.9	11.2	22.8		1.4	3.7	3.1	9.4
Office and Business Service				1.0	1.3					
Other										
INDUSTRIAL		8.6	1.3	1.2	.6	1.4			1.4	
INSTITUTIONAL		.8	11.0	9.1	3.5		2.3			4.8
AMUSEMENT				82.8						
TOTAL NON-RESIDENTIAL	9.9	11.2	13.2	105.3	28.2	1.4	3.7	3.7	4.5	14.2
UTILITIES	.5	.9	.5						.9	1.8
TRANSPORTATION:										
Streets	53.5	32.1	29.3	63.5	38.0	38.3	62.1	15.2	21.4	100.1
Terminals			1.4	.1						
Parking	2.1	2.1	1.8	6.9	4.1		.2			.8
Other		3.8	6.9							
AGRICULTURE	4.6	30.6				1724.1		121.4	52.0	5.5
WATER	3.8	3.8		124.2		37.6	6.9	3.7		17.3
TOTAL OTHER ACRES	64.5	73.3	39.9	194.7	42.1	1800.0	69.2	140.3	74.3	125.5
TOTAL OCCUPIED AREA	160.5	115.8	250.0	601.9	96.0	1813.2	227.7	172.8	144.8	359.0
VACANT	190.9	343.3	115.2	.7	3.4	99.5	570.9	790.4	514.4	654.8
TOTAL AREA	351.4	459.1	365.2	602.6	99.4	1912.7	798.6	963.2	659.2	1013.8

	<u>211</u>	<u>212</u>	<u>213</u>	<u>214</u>	<u>215</u>	<u>216</u>	<u>217</u>	<u>218</u>	<u>219</u>	<u>220</u>
RESIDENTIAL										
Single Family			83.3	131.6	115.0	4.1	11.5	5.1	34.3	44.4
Two Family			4.3	21.9	41.4		.7		.6	.2
Resident Apartment			1.6	10.2	10.4	.5			.7	
Other			5.8					5.5	13.8	
TOURIST ACCOMMODATIONS:										
Transient Apartment			4.6	.3	11.5					
Hotel										
Motel			.3		6.2					
Other										
TOTAL RESIDENTIAL ACRES	-	-	99.9	164.0	184.5	4.6	12.2	10.6	48.7	45.3
COMMERCIAL										
Retail and Personal Service			.9	3.2	8.3	3.2			.5	1.4
Office and Business Service					.8					
Other										
INDUSTRIAL				2.1	4.1				3.7	
INSTITUTIONAL	58.0	5.5	12.0	32.3	3.0				2.1	16.3
AMUSEMENT	38.6	187.7	44.6	15.6	19.1					174.8
TOTAL NON-RESIDENTIAL	96.6	193.2	57.5	53.2	35.3	3.2	-	-	6.3	192.5
UTILITIES				14.0						.9
TRANSPORTATION:										
Streets	15.9	20.7	55.2	62.1	96.6	41.4	16.6	9.7	38.0	37.3
Terminals										
Parking	10.1	.5	.9	2.1	1.3				.2	1.4
Other			4.1	8.5	3.7					
AGRICULTURE			9.2			903.6	172.0	561.7	185.8	22.1
WATER	4.1	9.2	59.8		186.8	75.6				
TOTAL OTHER ACRES	30.1	30.4	129.2	86.7	288.4	1020.6	188.6	571.4	224.0	61.7
TOTAL OCCUPIED AREA	126.7	223.6	286.6	303.9	508.2	1028.4	200.8	582.0	279.0	299.5
VACANT	23.3	1.8	170.6	109.2	60.4	970.8	552.7	503.6	482.8	673.9
TOTAL AREA	150.0	225.4	457.2	413.1	568.6	1999.2	753.5	1085.6	761.8	973.4

	<u>221</u>	<u>222</u>	<u>223</u>	<u>224</u>	<u>225</u>	<u>226</u>	<u>227</u>	<u>228</u>	<u>229</u>	<u>230</u>
RESIDENTIAL										
Single Family		128.2	173.7	33.4	44.4	12.0	12.0		6.0	6.4
Two Family			2.3	8.3	2.5	2.8				
Resident Apartment			4.4	2.3	5.5	2.8				
Other			4.6		5.1	1.6			.7	
TOURIST ACCOMMODATIONS:										
Transient Apartment				.7						
Hotel										
Motel			2.5	5.5		1.3				
Other										
TOTAL RESIDENTIAL ACRES	-	128.2	187.5	50.2	57.5	20.5	12.0	-	6.7	6.4
COMMERCIAL:										
Retail and Personal Service		.3	2.3		6.9	16.6				.7
Office and Business Service										
Other										
INDUSTRIAL					17.3					
INSTITUTIONAL		3.3	23.5	.6	144.4	.6				
AMUSEMENT	82.8	20.7	8.5			4.8				
TOTAL NON-RESIDENTIAL	82.8	24.3	34.3	.6	168.6	22.0	-	-	-	.7
UTILITIES					1.8					
TRANSPORTATION:										
Streets	12.4	55.9	46.9	48.3	25.5	13.8	89.1	13.8	14.8	7.9
Terminals	411.2									
Parking	1.8		.5		5.1	.9				
Other		1.6	3.3	2.5	3.5	1.7				
AGRICULTURE		15.9					3223.7	645.8	1021.2	312.8
WATER	42.3	80.0		80.5		62.6	36.1	6.9	22.1	11.0
TOTAL OTHER ACRES	467.7	153.4	50.7	131.3	35.9	79.0	3348.9	666.5	1058.1	331.7
TOTAL OCCUPIED AREA	550.5	305.9	272.5	182.1	262.0	121.5	3360.9	666.5	1064.8	338.8
VACANT	23.6	41.9	8.1	38.7	91.3	72.6	964.0	89.7	.8	356.7
TOTAL AREA	574.1	347.8	280.6	220.8	353.3	194.1	4324.9	756.2	1065.6	695.5

	<u>231</u>	<u>232</u>	<u>233</u>	<u>234</u>	<u>235</u>	<u>236</u>	<u>237</u>	<u>238</u>	<u>239</u>	<u>240</u>
RESIDENTIAL										
Single Family	93.2	84.4	264.7	45.5		23.0	13.8	8.3	23.0	170.9
Two Family		2.8	3.2	.7						
Resident Apartment			3.6							1.8
Other		4.0						3.7		
TOURIST ACCOMMODATIONS:										
Transient Apartment										
Hotel										
Motel			1.4	1.4						
Other										
TOTAL RESIDENTIAL ACRES	93.2	91.2	272.9	47.6	-	23.0	13.8	12.0	23.0	172.7
COMMERCIAL:										
Retail and Personal Service	.9	1.2	8.1	4.6			.5	.5		4.6
Office and Business Service										
Other										
INDUSTRIAL		1.2							1.4	
INSTITUTIONAL			25.3	2.6			1.2			35.4
AMUSEMENT			5.5							
TOTAL NON-RESIDENTIAL	.9	2.4	38.9	7.2	-	-	1.7	.5	1.4	40.0
UTILITIES	1.2		2.5							
TRANSPORTATION:										
Streets	64.9	62.1	124.9	17.9	13.8	30.4	31.1	7.0	7.8	81.1
Terminals										
Parking		.9	8.6	3.2						
Other		3.8	11.3						6.9	13.8
AGRICULTURE	43.2	61.6			666.2	453.4	146.3	811.0	10.1	3.7
WATER	20.0	76.4		85.6	29.3	26.2	9.0	15.2	17.9	
TOTAL OTHER ACRES	129.3	204.8	147.3	106.7	709.3	510.0	186.4	833.2	42.7	98.6
TOTAL OCCUPIED AREA	223.4	298.4	459.1	161.5	709.3	533.0	201.9	845.7	67.1	311.3
VACANT	685.6	544.3	233.7	75.9	50.6	451.4	437.5	108.3	737.9	310.6
TOTAL AREA	909.0	842.7	692.8	237.4	759.9	984.4	639.4	954.0	805.0	621.9

	<u>241</u>	<u>242</u>	<u>243</u>	<u>244</u>	<u>245</u>	<u>246</u>	<u>247</u>	<u>248</u>	<u>249</u>	<u>250</u>
RESIDENTIAL										
Single Family	14.3	18.4	.9	1.4	6.9	11.7	8.3		58.0	50.1
Two Family	.5						.7			
Resident Apartment										
Other	8.3				1.8	27.9	.8			8.5
TOURIST ACCOMMODATIONS:										
Transient Apartment										
Hotel										
Motel	.9									
Other										
TOTAL RESIDENTIAL ACRES	24.0	18.4	.9	1.4	8.7	39.6	9.8	-	58.0	58.6
COMMERCIAL:										
Retail and Personal Service	3.7	2.3					1.0		.5	1.6
Office and Business Service										
Other										
INDUSTRIAL										
INSTITUTIONAL	1.4	11.0							3.9	
AMUSEMENT									11.5	4.1
TOTAL NON-RESIDENTIAL	5.1	13.3	-	-	-	-	1.0	-	15.9	5.7
UTILITIES							.7			3.7
TRANSPORTATION:										
Streets	24.8	52.4	20.4	8.1	14.2	22.3	19.0	9.2	55.0	100.5
Terminals										
Parking										
Other	6.9							5.2	.7	5.3
AGRICULTURE		2844.6	491.2	736.0	153.2	347.1	46.0		34.5	
WATER	109.3	14.5	3.8	9.4	8.5		6.9	8.3		12.0
TOTAL OTHER ACRES	141.0	2911.5	515.4	753.5	175.9	369.4	72.6	22.7	94.0	121.5
TOTAL OCCUPIED AREA	170.1	2943.2	516.3	754.9	184.6	409.0	83.4	22.7	167.9	185.8
VACANT	100.4	641.1	364.1	429.1	287.4	338.0	683.9	1004.9	161.5	255.8
TOTAL AREA	270.5	3584.3	880.4	1184.0	472.0	747.0	767.3	1027.6	329.4	441.6

	<u>251</u>	<u>252</u>	<u>253</u>	<u>254</u>	<u>255</u>	<u>256</u>	<u>257</u>	<u>258</u>	<u>259</u>	<u>260</u>
RESIDENTIAL										
Single Family	25.3	1.2	7.8	4.6	13.1	64.4	110.6	20.7	12.9	4.6
Two Family	.9		.6			.6	6.9	.2		
Resident Apartment	1.2					.5	8.3	.7		
Other	8.1	1.8	.7						5.5	3.5
TOURIST ACCOMMODATIONS:										
Transient Apartment	.9									
Hotel										
Motel	4.1							1.4		
Other										
TOTAL RESIDENTIAL ACRES	40.5	3.0	9.1	4.6	13.1	65.5	125.8	23.0	18.4	8.1
COMMERCIAL:										
Retail and Personal Service	1.2		10.4		.9	1.8	31.2	5.8	.9	1.2
Office and Business Service							.6	.7		
Other										
INDUSTRIAL		2.3				6.9	9.0			
INSTITUTIONAL				1.6			47.4			
AMUSEMENT	2.1			161.0			4.1			
TOTAL NON-RESIDENTIAL	3.3	2.3	10.4	162.6	.9	8.7	92.3	6.5	.9	1.2
UTILITIES						.8	.7			
TRANSPORTATION:										
Streets	23.0	27.6	7.6	17.3	79.2	50.4	112.9	20.7	67.2	26.5
Terminals										
Parking	.8			.9		1.0		.8		
Other	4.5						4.0	1.0		
AGRICULTURE		492.2	207.0	210.2			5.8		2848.3	585.1
WATER	230.0	3.8	32.1	9.4	4.8		12.0	27.6	59.3	
TOTAL OTHER ACRES	258.3	523.6	246.7	237.8	84.0	52.2	135.4	50.1	2974.8	611.6
TOTAL OCCUPIED AREA	302.1	528.9	266.2	405.0	98.0	126.4	353.5	79.6	2994.1	620.9
VACANT	78.8	17.6	699.8	108.4	397.0	357.5	154.3	77.7	905.8	863.1
TOTAL AREA	380.9	546.5	966.0	513.4	495.0	483.9	507.8	157.3	3899.9	1484.0

	<u>261</u>	<u>262</u>	<u>263</u>	<u>264</u>	<u>265</u>	<u>266</u>	<u>267</u>	<u>268</u>	<u>269</u>	<u>270</u>
RESIDENTIAL										
Single Family	8.3	1.8	3.9	1.4		11.3	174.6	25.3	.9	31.7
Two Family							4.1	.9		
Resident Apartment							3.5	.5		
Other										
TOURIST ACCOMMODATIONS:										
Transient Apartment										
Hotel										
Motel								1.5		
Other										
TOTAL RESIDENTIAL ACRES	8.3	1.8	3.9	1.4	-	11.3	182.2	28.2	.9	31.7
COMMERCIAL:										
Retail and Personal Service		1.8	1.8			.7	6.4	11.7		
Office and Business Service	.9									
Other										
INDUSTRIAL	5.5						1.2			
INSTITUTIONAL		22.1	1.4				11.0	.7		2.1
AMUSEMENT		3.0	97.1				5.5	4.8		127.0
TOTAL NON-RESIDENTIAL	6.4	26.9	100.3	-	-	.7	24.1	17.2	-	129.1
UTILITIES										
TRANSPORTATION:										
Streets	7.4	12.0	36.6	3.8	2.8	16.6	96.6	13.5	5.1	39.0
Terminals										
Parking							2.8	1.6		2.8
Other						5.9	7.6	2.4		
AGRICULTURE	311.9	265.9		381.8					37.3	11.5
WATER	3.8	13.3	4.6	1.2	1.8	8.1		16.6	7.6	27.6
TOTAL OTHER ACRES	323.1	291.2	41.2	386.8	4.6	30.6	107.0	34.1	50.0	80.9
TOTAL OCCUPIED AREA	337.8	319.9	145.4	388.2	4.6	42.6	313.3	79.5	50.9	241.7
VACANT	978.7	971.8	488.5	257.6	217.1	678.7	142.1	109.1	616.1	497.1
TOTAL AREA	1316.5	1291.7	633.9	645.8	221.7	721.3	455.4	188.6	667.0	738.8

	<u>271</u>	<u>272</u>	<u>273</u>	<u>274</u>	<u>275</u>	<u>276</u>	<u>277</u>	<u>278</u>	<u>279</u>	<u>280</u>
RESIDENTIAL										
Single Family	28.3	3.2	8.5	126.7	37.3	6.0	10.1	1.8	4.6	12.9
Two Family				2.0	1.4					
Resident Apartment				1.2	.7					
Other					5.5	6.9	2.3		5.5	
TOURIST ACCOMMODATIONS:										
Transient Apartment					.9					
Hotel										
Motel			2.8		18.6					
Other										
TOTAL RESIDENTIAL ACRES	28.3	3.2	11.3	129.9	64.4	12.9	12.4	1.8	10.1	12.9
COMMERCIAL:										
Retail and Personal Service			6.4	.9	9.4	3.2	23.7		7.4	12.9
Office and Business Service				1.4						
Other										
INDUSTRIAL			.5							
INSTITUTIONAL		4.6		3.7			1.6			
AMUSEMENT		12.9								
TOTAL NON-RESIDENTIAL	-	17.5	6.9	6.0	9.4	3.2	25.3	-	7.4	12.9
UTILITIES		6.4								
TRANSPORTATION:										
Streets	48.3	11.7	10.4	53.8	33.8	122.3	38.0	7.0	13.8	13.8
Terminals										
Parking			3.2	4.6	.5					.1
Other	4.1	4.1	1.7	3.5	3.5					
AGRICULTURE			24.0		23.0	4876.0	1184.5	621.0	59.8	167.4
WATER	15.2		12.9	17.3	13.8	79.6	18.0			
TOTAL OTHER ACRES	67.6	22.2	52.2	79.2	74.6	5077.9	1240.5	628.0	73.6	181.3
TOTAL OCCUPIED AREA	95.9	42.9	70.4	215.1	148.4	5094.0	1278.2	629.8	91.1	207.1
VACANT	314.4	171.5	45.5	531.9	128.5	553.0	953.7	16.3	521.2	451.2
TOTAL AREA	410.3	214.4	115.9	747.0	276.9	5647.0	2231.9	646.1	612.3	658.3

	<u>281</u>	<u>282</u>	<u>283</u>	<u>284</u>	<u>285</u>	<u>286</u>	<u>287</u>	<u>288</u>	<u>289</u>	<u>290</u>
RESIDENTIAL										
Single Family	8.1	199.0	34.3	2.8	31.3	100.1	3.7	119.3	8.2	37.3
Two Family		17.0	1.2					18.6	4.4	10.2
Resident Apartment		1.6	3.5					1.0	8.1	4.3
Other			6.0	2.8	2.8	12.0				
TOURIST ACCOMMODATIONS:										
Transient Apartment									.6	
Hotel										
Motel	5.5		5.8						3.2	1.0
Other										
TOTAL RESIDENTIAL ACRES	13.6	217.6	50.8	5.6	34.1	112.1	3.7	138.9	24.5	52.8
COMMERCIAL:										
Retail and Personal Service		6.0	33.6		.9	5.3			22.5	6.9
Office and Business Service									1.2	.6
Other										
INDUSTRIAL										3.2
INSTITUTIONAL	4.1	31.3	2.3		.9	.9		9.2	2.4	15.1
AMUSEMENT		18.4	6.4					.5	3.1	2.3
TOTAL NON-RESIDENTIAL	4.1	55.7	42.3	-	1.8	6.2	-	9.7	29.2	28.1
UTILITIES					3.7					4.1
TRANSPORTATION:										
Streets	20.7	108.3	55.2	13.8	79.4	27.6	13.8	75.9	45.1	39.3
Terminals										
Parking	1.5	2.3	.9					.7	1.5	3.7
Other	2.4	6.9	7.7				3.5	4.5	4.8	2.1
AGRICULTURE				1207.0		43.2				
WATER	66.2	66.2	15.2	6.9	461.0		18.9	27.6		
TOTAL OTHER ACRES	90.8	183.7	79.0	1227.7	544.1	70.8	36.2	108.7	51.4	49.2
TOTAL OCCUPIED AREA	108.5	457.0	172.1	1233.3	580.0	189.1	39.9	257.3	105.1	130.1
VACANT	402.1	302.9	164.2	120.5	608.6	978.4	536.9	131.9	32.0	61.3
TOTAL AREA	510.6	759.9	336.3	1353.8	1188.6	1167.5	576.8	389.2	137.1	191.4

~~185~~
 66.2
 693.7

	<u>291</u>	<u>292</u>	<u>293</u>	<u>294</u>	<u>295</u>	<u>296</u>	<u>297</u>	<u>298</u>	<u>299</u>	<u>300</u>
RESIDENTIAL										
Single Family	17.4	43.1	63.3	116.8	10.1	42.7	61.2	25.2	88.3	101.1
Two Family	2.4	4.1		18.6	.5				16.5	17.8
Resident Apartment	5.5	4.1		3.5		4.6		1.7	2.5	4.9
Other					4.1	2.1				
TOURIST ACCOMMODATIONS:										
Transient Apartment										1.4
Hotel	.2	2.1		.3						
Motel					.9					
Other										
TOTAL RESIDENTIAL ACRES	25.5	53.4	63.3	139.2	15.6	49.4	61.2	26.9	107.3	125.2
COMMERCIAL:										
Retail and Personal Service	17.3	1.2	2.8	9.9	27.4	3.0	.3	11.5	2.3	6.0
Office and Business Service	1.2	.2								
Other						3.2				
INDUSTRIAL			4.9	.6	.9	4.0		5.6		10.9
INSTITUTIONAL	1.8	2.8	.9	16.8	1.4		.2	4.8	19.6	8.2
AMUSEMENT		6.9			165.6		42.3	198.7	11.7	
TOTAL NON-RESIDENTIAL	20.3	11.1	8.6	27.3	195.3	10.2	42.8	220.6	33.6	25.1
UTILITIES										7.4
TRANSPORTATION:										
Streets	28.3	24.2	44.9	55.2	99.8	70.0	42.8	46.8	69.3	84.9
Terminals								.7	2.3	
Parking	5.8	.6		1.2	.9		.9	2.3		2.3
Other	1.7		.7	3.5				5.5		5.5
AGRICULTURE			4.6		1134.4	2572.0	2.3	10.9	2.3	6.4
WATER	15.6	14.3	6.9		90.8	97.2	4.3	19.3	1.4	1.6
TOTAL OTHER ACRES	51.4	39.1	57.1	59.9	1325.9	2739.2	50.3	85.5	75.3	108.1
TOTAL OCCUPIED AREA	97.2	103.6	129.0	226.4	1536.8	2798.8	154.3	333.0	216.2	258.4
VACANT	.3	10.3	454.3	90.1	4262.0	467.7	731.7	631.6	372.6	251.3
TOTAL AREA	97.5	113.9	583.3	316.5	5798.8	3266.5	886.0	964.6	588.8	509.7

	<u>301</u>	<u>302</u>	<u>303</u>	<u>304</u>	<u>305</u>	<u>306</u>	<u>307</u>	<u>308</u>	<u>309</u>	<u>310</u>
RESIDENTIAL										
Single Family	53.2	3.7	3.7	15.0	31.4	2.1	.9		4.6	3.2
Two Family	11.4				.7					
Resident Apartment	4.9				.3		2.3		1.0	
Other					7.2	1.4				6.4
TOURIST ACCOMMODATIONS:										
Transient Apartment										
Hotel	.2									
Motel					1.3					2.1
Other										
TOTAL RESIDENTIAL ACRES	69.7	3.7	3.7	15.0	40.9	3.5	3.2	-	5.6	11.7
COMMERCIAL:										
Retail and Personal Service	12.4	.7			4.3					5.2
Office and Business Service										
Other										
INDUSTRIAL	1.7		1.2						1.6	1.6
INSTITUTIONAL	.9								.3	
AMUSEMENT	7.6								49.8	
TOTAL NON-RESIDENTIAL	22.6	.7	1.2	-	4.3	-	-	-	51.7	6.8
UTILITIES	2.5									
TRANSPORTATION:										
Streets	76.2	7.9	3.8	46.2	67.3	39.2	3.8		38.3	36.6
Terminals										
Parking	.8				1.7					1.6
Other	3.8		3.1	7.6	3.8			3.5	7.2	3.7
AGRICULTURE	13.3	80.5	4.0		20.0	2463.8	490.8	265.9	2.4	17.0
WATER	24.9	11.4	22.4	29.0	69.0	106.1	3.8	18.6	35.9	46.5
TOTAL OTHER ACRES	121.5	99.8	33.3	82.8	161.8	2609.1	498.4	288.0	83.8	105.4
TOTAL OCCUPIED AREA	213.8	104.2	38.2	97.8	207.0	2612.6	501.6	288.0	141.1	123.9
VACANT	107.7	525.1	403.4	548.0	402.0	377.4	169.1	297.1	383.1	220.2
TOTAL AREA	321.5	629.3	441.6	645.8	609.0	2990.0	670.7	585.1	524.2	344.1

	<u>311</u>	<u>312</u>	<u>313</u>	<u>314</u>	<u>315</u>	<u>316</u>	<u>317</u>	<u>318</u>	<u>319</u>	<u>320</u>
RESIDENTIAL										
Single Family	6.9		1.4	1.8		88.8		4.6		
Two Family						.3				
Resident Apartment						.8				
Other	6.4	3.2								
TOURIST ACCOMMODATIONS:										
Transient Apartment										
Hotel										
Motel										
Other										
TOTAL RESIDENTIAL ACRES	13.3	3.2	1.4	1.8	-	89.9	-	4.6	-	-
COMMERCIAL:										
Retail and Personal Service			2.1			4.4				
Office and Business Service										
Other										
INDUSTRIAL			2.3			.2				
INSTITUTIONAL							.9	73.6	49.7	
AMUSEMENT								20.7		
TOTAL NON-RESIDENTIAL	-	-	4.4	-	-	4.6	.9	94.3	49.7	-
UTILITIES			.7							
TRANSPORTATION:										
Streets	90.8	22.1	13.1	4.1		87.0	41.4	24.2	1.7	5.2
Terminals										
Parking						1.6		.7	1.4	
Other				4.3	8.1	3.9				3.7
AGRICULTURE	5107.8	1597.1	436.9		8.5		690.0	143.5		
WATER	56.3	61.1	18.6	10.7	2.4	107.3		9.2	9.2	
TOTAL OTHER ACRES	5254.9	1680.3	469.3	19.1	19.0	199.8	731.4	177.6	12.3	8.9
TOTAL OCCUPIED AREA	5268.2	1683.5	475.1	20.9	19.0	294.3	732.3	276.5	62.0	8.9
VACANT	215.0	70.0	809.7	965.3	481.5	216.8	103.5	672.9	1434.8	751.0
TOTAL AREA	5483.2	1753.5	1284.8	986.2	500.5	511.1	835.8	949.4	1496.8	759.9

	<u>321</u>	<u>322</u>	<u>323</u>	<u>324</u>	<u>325</u>	<u>326</u>	<u>327</u>	<u>328</u>	<u>329</u>	<u>330</u>
RESIDENTIAL										
Single Family	32.0	1.0	112.7	6.9			10.4		46.0	
Two Family			10.4						5.1	
Resident Apartment	6.9		5.1				3.0	.9	1.3	2.8
Other										
TOURIST ACCOMMODATIONS:										
Transient Apartment										
Hotel										
Motel			2.8							
Other										
TOTAL RESIDENTIAL ACRES	38.9	1.0	131.0	6.9	-	-	13.4	.9	52.4	2.8
COMMERCIAL:										
Retail and Personal Service	.9	2.5	3.2				.3	7.4	2.8	2.8
Office and Business Service										
Other										
INDUSTRIAL		9.7						8.3		
INSTITUTIONAL			.9	1.6	1.2	1122.2	20.1		.3	
AMUSEMENT					229.1					
TOTAL NON-RESIDENTIAL	.9	12.2	4.1	1.6	230.3	1122.2	20.4	15.7	3.1	2.8
UTILITIES					11.0			3.2		
TRANSPORTATION:										
Streets	39.8	10.6	124.2	20.7	9.7	70.3	19.3	9.0	55.9	3.1
Terminals										
Parking		4.6	1.4	1.8	.9	16.1			.6	2.8
Other		3.9	5.2			5.5		3.7	3.5	
AGRICULTURE			27.6							9.2
WATER	5.8		28.3	2.1	3.1					24.8
TOTAL OTHER ACRES	45.6	19.1	186.7	24.6	24.7	91.9	19.3	15.9	60.0	39.9
TOTAL OCCUPIED AREA	85.4	32.3	321.8	33.1	255.0	1214.1	53.1	32.5	115.5	45.5
VACANT	392.1	53.0	284.7	233.7	21.9	14.1	208.2	46.6	57.0	27.2
TOTAL AREA	477.5	85.3	606.5	266.8	276.9	1228.2	261.3	79.1	172.5	72.7

	<u>331</u>	<u>332</u>	<u>333</u>	<u>334</u>	<u>335</u>	<u>336</u>	<u>337</u>	<u>338</u>	<u>339</u>	<u>340</u>
RESIDENTIAL										
Single Family	9.4	1.8	21.2	29.9	163.3	92.5	6.0	11.5	5.5	119.1
Two Family						2.1				.7
Resident Apartment					1.8	6.4				
Other	2.8							3.7		
TOURIST ACCOMMODATIONS:										
Transient Apartment										
Hotel										
Motel										
Other								1.6	1.2	
TOTAL RESIDENTIAL ACRES	12.2	1.8	21.2	29.9	165.1	101.0	6.0	16.8	6.7	119.8
COMMERCIAL:										
Retail and Personal Service						4.4	4.8	11.5	17.0	3.9
Office and Business Service										.3
Other										
INDUSTRIAL										
INSTITUTIONAL				106.5	250.2	28.5	11.5		.3	
AMUSEMENT				11.5	11.0	5.5	7.1	1.2	.5	
TOTAL NON-RESIDENTIAL	-	-	-	118.0	261.2	38.4	23.4	12.7	18.1	8.3
										12.5
UTILITIES										
TRANSPORTATION:						.7				
Streets	73.8	13.8	31.4	33.8	78.2	73.1	17.9	36.9	30.7	70.6
Terminals										
Parking					.3	3.7	1.7	4.8	.1	
Other				3.5		3.5	4.5	4.1	9.7	3.3
AGRICULTURE	2322.1	299.0							2.3	
WATER	64.4		19.3							29.9
TOTAL OTHER ACRES	2460.3	312.8	50.7	37.3	78.5	81.0	24.1	45.8	42.8	103.8
TOTAL OCCUPIED AREA	2472.5	314.6	71.9	185.2	504.8	220.4	53.5	75.3	67.6	236.1
VACANT	2890.2	1384.6	734.0	280.3	3.0	219.4	45.2	112.4	37.3	115.3
TOTAL AREA	5362.7	1699.2	805.9	465.5	507.8	439.8	98.7	187.7	104.9	351.4

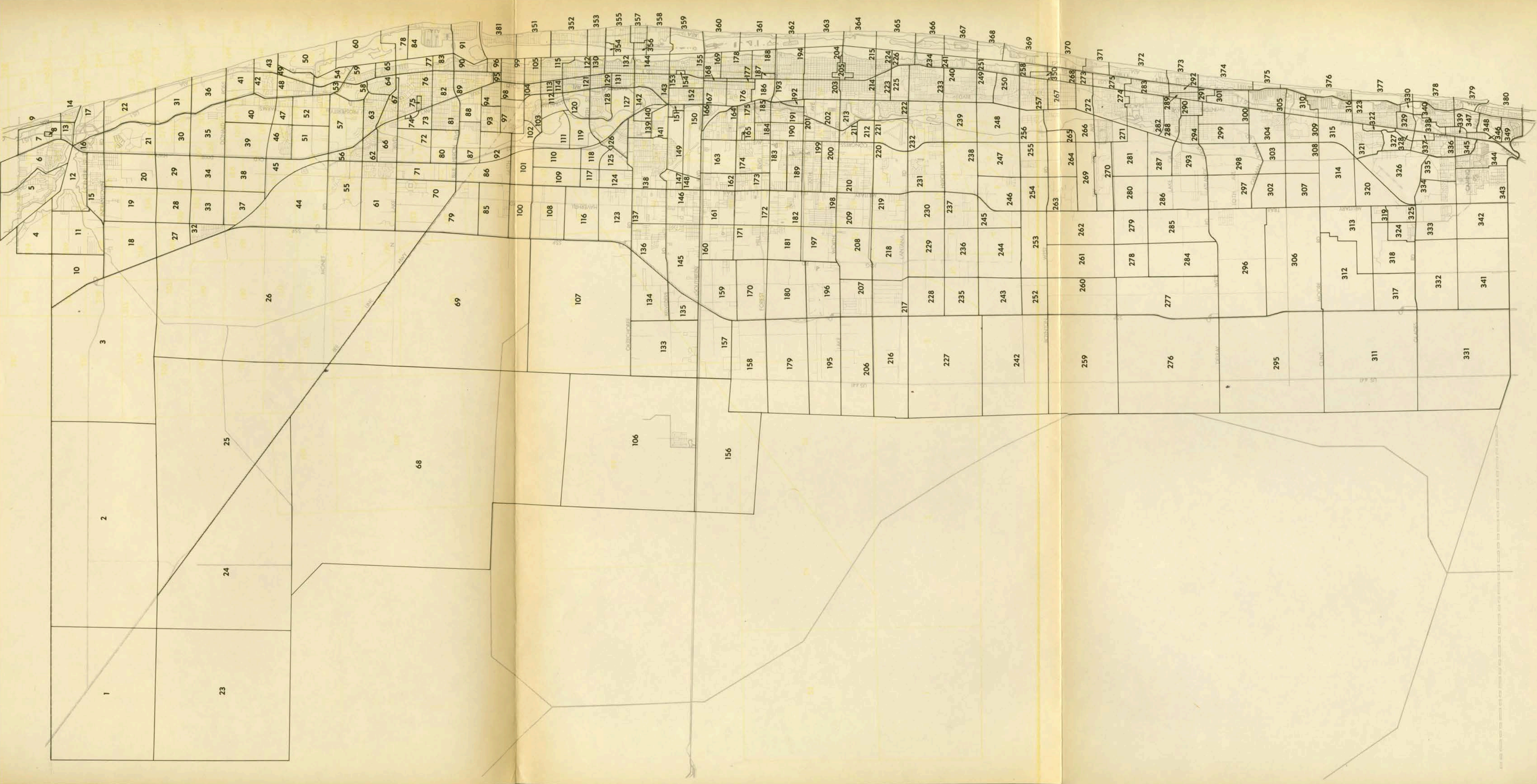
	<u>341</u>	<u>342</u>	<u>343</u>	<u>344</u>	<u>345</u>	<u>346</u>	<u>347</u>	<u>348</u>	<u>349</u>	<u>350</u>
RESIDENTIAL										
Single Family	2.5		150.0	129.5	22.1	5.1	3.7	43.1	80.5	3.8
Two Family					.5	.2				1.0
Resident Apartment				1.8	24.3	1.5	.6			1.6
Other										
TOURIST ACCOMMODATIONS:										
Transient Apartment										.6
Hotel							7.4			
Motel						2.9				.7
Other										
TOTAL RESIDENTIAL ACRES	2.5	-	150.0	131.3	46.9	9.7	11.7	43.1	80.5	7.7
COMMERCIAL:										
Retail and Personal Service				.5	4.4	2.0	2.8			8.5
Office and Business Service										
Other										
INDUSTRIAL										
INSTITUTIONAL			.6	1.0	12.2		1.6	.5	1.6	4.9
AMUSEMENT				1.2	3.2	.6	147.7	109.5	22.1	.2
TOTAL NON-RESIDENTIAL	-	-	.6	2.7	19.8	2.6	152.1	110.0	23.7	13.6
UTILITIES				17.0						.2
TRANSPORTATION:										
Streets	50.7	4.1	140.1	89.0	32.4	64.2	18.3	33.1	35.5	18.3
Terminals						.6				
Parking			.6	.2	4.4	3.0	7.1	.9	1.6	6.2
Other		5.2	5.2	5.2	3.5	7.6				2.1
AGRICULTURE	1337.7	279.7								
WATER	78.7	33.1	27.4	52.4	4.8	9.0	24.8	10.7	57.6	
TOTAL OTHER ACRES	1467.1	322.1	173.3	163.8	45.1	84.4	50.2	44.7	94.7	26.8
TOTAL OCCUPIED AREA	1469.6	322.1	323.9	297.8	111.8	96.7	214.0	197.8	198.9	48.1
VACANT	554.4	683.9	708.3	389.4	88.3	79.5	57.4	135.2	55.0	45.7
TOTAL AREA	2024.0	1006.0	1032.2	687.2	200.1	176.2	271.4	333.0	253.9	93.8

	<u>351</u>	<u>352</u>	<u>353</u>	<u>354</u>	<u>355</u>	<u>356</u>	<u>357</u>	<u>358</u>	<u>359</u>	<u>360</u>
RESIDENTIAL										
Single Family	81.1	215.1	52.7		73.2	9.0	32.9	116.9	114.4	78.7
Two Family			1.1			1.8	9.1			
Resident Apartment			8.5			9.3	14.1	.1		
Other										
TOURIST ACCOMMODATIONS:										
Transient Apartment			7.8			1.6	4.3	.3		
Hotel			14.6	5.6	16.3	.3	6.0	.2		
Motel										
Other										
TOTAL RESIDENTIAL ACRES	81.1	215.1	84.7	5.6	89.5	22.0	66.4	117.5	114.4	78.7
COMMERCIAL:										
Retail and Personal Service			5.2	5.7	.2	1.6	22.0	.3		
Office and Business Service				.7	.5		2.0			
Other										
INDUSTRIAL										
INSTITUTIONAL	1.1	10.1	3.0	7.4	5.9	3.7	11.0			4.6
AMUSEMENT	69.9	.9	3.8		80.3	5.4	27.2	98.5	3.7	3.2
TOTAL NON-RESIDENTIAL	71.0	11.0	12.0	13.8	86.9	10.7	62.2	98.8	3.7	7.8
UTILITIES										
TRANSPORTATION:										
Streets	41.5	61.6	46.7		59.9	10.5		36.6	26.1	13.1
Terminals										
Parking			1.5	8.5	8.2	.8	6.8	.5		2.4
Other										
AGRICULTURE										
WATER	297.3	255.3	83.7	40.5	59.8	50.6		121.4	365.7	278.8
TOTAL OTHER ACRES	338.8	316.9	131.9	49.0	127.9	61.9	6.8	158.5	391.8	294.3
TOTAL OCCUPIED AREA	490.9	543.0	228.6	68.4	304.3	94.6	135.4	374.8	509.9	380.8
VACANT	357.0	26.0	112.2	8.0	2.4	.8	4.9	6.7	14.5	26.8
TOTAL AREA	847.9	569.0	340.8	76.4	306.7	95.4	140.3	381.5	524.4	407.6

	<u>361</u>	<u>362</u>	<u>363</u>	<u>364</u>	<u>365</u>	<u>366</u>	<u>367</u>	<u>368</u>	<u>369</u>	<u>370</u>
RESIDENTIAL										
Single Family	31.6	12.2	1.4	1.8	30.4	61.2	32.2	10.4	19.6	36.5
Two Family										1.6
Resident Apartment			8.7	.7	12.0	2.8	.7		12.3	2.0
Other										
TOURIST ACCOMMODATIONS:										
Transient Apartment			4.6	5.3						.8
Hotel		8.1	3.5							
Motel			4.9	3.2						.8
Other										
TOTAL RESIDENTIAL ACRES	31.6	20.3	23.1	11.0	42.4	64.0	32.9	10.4	31.9	41.7
COMMERCIAL:										
Retail and Personal Service			.5	.7	.1	.6			1.2	.5
Office and Business Service										
Other										
INDUSTRIAL										
INSTITUTIONAL		.1			.9	2.4	1.4			
AMUSEMENT		44.4	8.3	5.8	1.6	.7	10.8		4.1	
TOTAL NON-RESIDENTIAL	-	44.5	8.8	6.5	2.6	3.7	12.2	-	5.3	.5
UTILITIES				.9						
TRANSPORTATION:										
Streets	8.6	13.8	7.6	9.3	15.2	18.6	16.9	5.5	34.5	32.1
Terminals										
Parking		4.4	6.2	7.7	4.1	.9	.2	.5	5.9	1.0
Other										
AGRICULTURE										
WATER	204.2	89.2	162.8	216.2	190.8	117.8	159.2	150.9	101.7	27.8
TOTAL OTHER ACRES	212.8	107.4	176.6	234.1	210.1	137.3	176.3	156.9	142.1	60.9
TOTAL OCCUPIED AREA	244.4	172.2	208.5	251.6	255.1	205.0	221.4	167.3	179.3	103.1
VACANT	46.3	67.0	82.2	53.8	144.2	98.6	87.7	35.1	180.4	186.7
TOTAL AREA	290.7	239.2	290.7	305.4	399.3	303.6	309.1	202.4	359.7	289.8

	<u>371</u>	<u>372</u>	<u>373</u>	<u>374</u>	<u>375</u>	<u>376</u>	<u>377</u>	<u>378</u>	<u>379</u>	<u>380</u>	<u>381</u>
RESIDENTIAL											
Single Family	13.3	91.4	76.7	85.8	17.9	12.7	10.8	45.7	17.0	61.2	116.6
Two Family				.7			.5	.8		.2	
Resident Apartment	3.7	5.8	4.6	6.0	4.5	7.4	.2	4.1	8.2	25.6	
Other	20.7										
TOURIST ACCOMMODATIONS:											
Transient Apartment	1.8	6.4	6.9	33.6	14.4	18.6	2.2	.3	3.0	.6	
Hotel			1.0	1.6							
Motel								.9	.3		
Other											
TOTAL RESIDENTIAL ACRES	39.5	103.6	89.2	127.7	36.8	38.7	13.7	51.8	28.5	87.6	116.6
COMMERCIAL:											
Retail and Personal Service	1.8		1.5	2.8			.1	2.5	.2	.2	.1
Office and Business Service		.2		.2				.2			
Other											
INDUSTRIAL											
INSTITUTIONAL	1.4	2.6	.1	2.0	.5	.3	.2			3.0	2.3
AMUSEMENT		125.4							4.6	11.7	
TOTAL NON-RESIDENTIAL	3.2	128.2	1.6	5.0	.5	.3	.3	2.7	4.8	14.9	2.4
UTILITIES											
TRANSPORTATION:											
Streets	23.5	34.5	41.7	69.0	5.9	25.5	19.0	41.7	20.0	55.5	49.5
Terminals											
Parking	.7	1.8	2.3	8.1	1.7	2.4		1.2	.7	6.0	
Other											
AGRICULTURE											
WATER	12.9	47.2	41.9	63.0	13.8	69.2	47.8	40.5	74.5	29.2	299.0
TOTAL OTHER ACRES	37.1	83.5	85.9	140.1	21.4	97.1	66.8	83.4	95.2	90.7	348.5
TOTAL OCCUPIED AREA	79.8	315.3	176.7	272.8	58.7	136.1	80.8	137.9	128.5	193.2	467.5
VACANT	88.6	91.8	34.0	89.7	41.6	241.3	273.4	155.6	62.9	122.6	22.6
TOTAL AREA	168.4	407.1	210.7	362.5	100.3	377.4	354.2	293.5	191.4	315.8	490.1

	<u>TOTAL</u>
RESIDENTIAL	
Single Family	16,368.4
Two Family	1,063.1
Resident Apartment	858.1
Other	532.4
TOURIST ACCOMMODATIONS:	
Transient Apartment	167.5
Hotel	101.2
Motel	173.4
Other	
TOTAL RESIDENTIAL ACRES	19,264.1
COMMERCIAL:	
Retail and Personal Service	1,433.8
Office and Business Service	86.4
Other	21.2
INDUSTRIAL	1,399.6
INSTITUTIONAL	15,051.9
AMUSEMENT	5,296.9
TOTAL NON-RESIDENTIAL	23,289.8
UTILITIES	504.4
TRANSPORTATION:	
Streets	14,739.1
Terminals	1,392.7
Parking	510.1
Other	746.9
AGRICULTURE	60,439.5
WATER	15,138.7
TOTAL OTHER ACRES	93,471.4
TOTAL OCCUPIED AREA	136,025.3
VACANT	239,379.5
TOTAL AREA	375,404.8



PALM BEACH COUNTY

PLANNING DEPARTMENT

DATE APRIL 1965

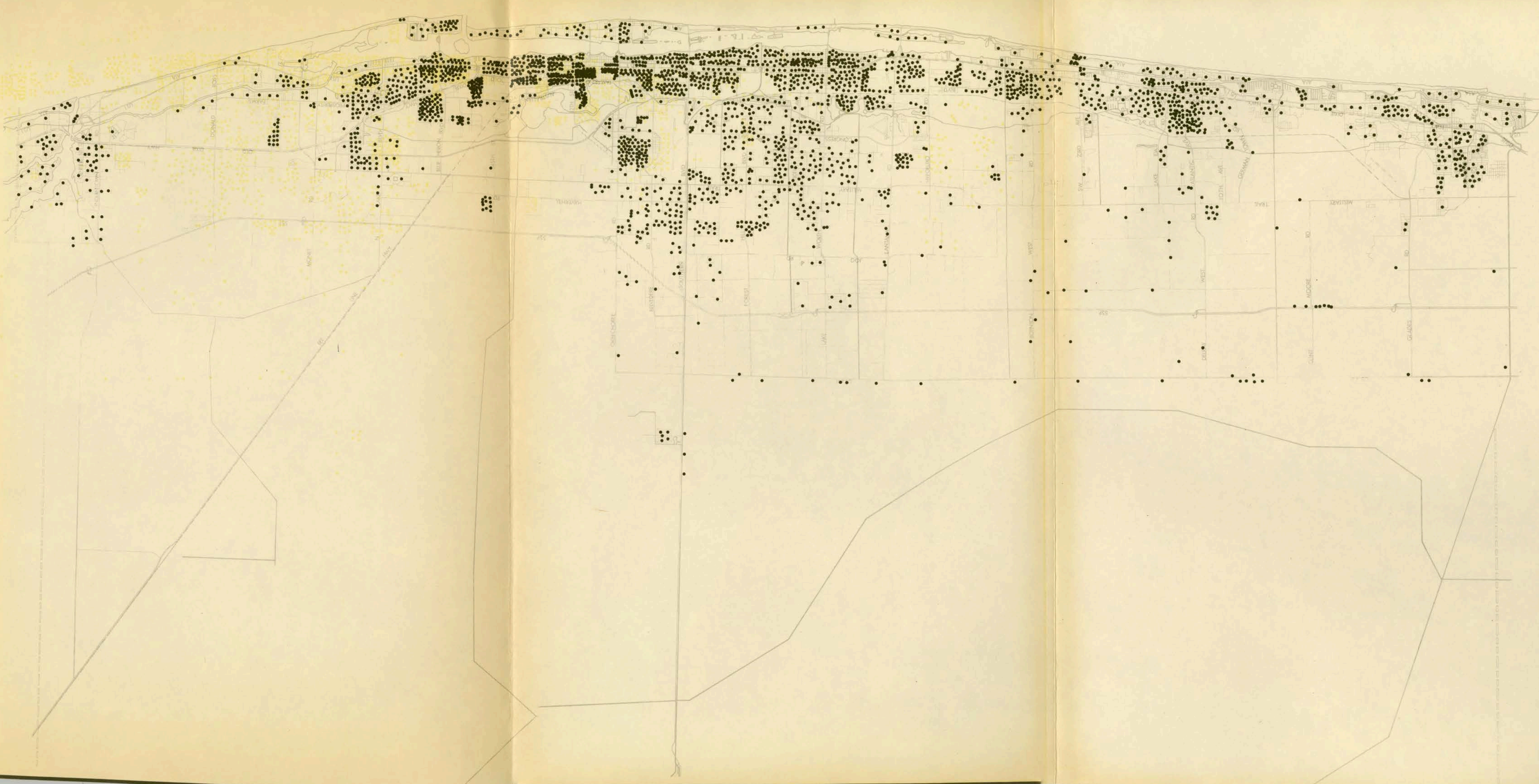
0 1/4 1/2 3/4 1 MILE

1/4 1/2 3/4 1 MILE

1/4 1/2 3/4 1 MILE

TRAFFIC ZONES

279 = ZONE NUMBER



PALM BEACH COUNTY

PLANNING DEPARTMENT

DATE: APRIL 1965

0 1m 2m

• = 100 PEOPLE

1965 POPULATION DENSITY

TOTAL POPULATION 306,578

EAST COAST 276,038

