

10-18-2019

Collaboration and Integration: Embedding the Library into Canvas

Jennifer Murray

Daniel Feinberg

University of North Florida, daniel.feinberg@unf.edu

Follow this and additional works at: https://digitalcommons.unf.edu/library_facpub



Part of the [Library and Information Science Commons](#)

Recommended Citation

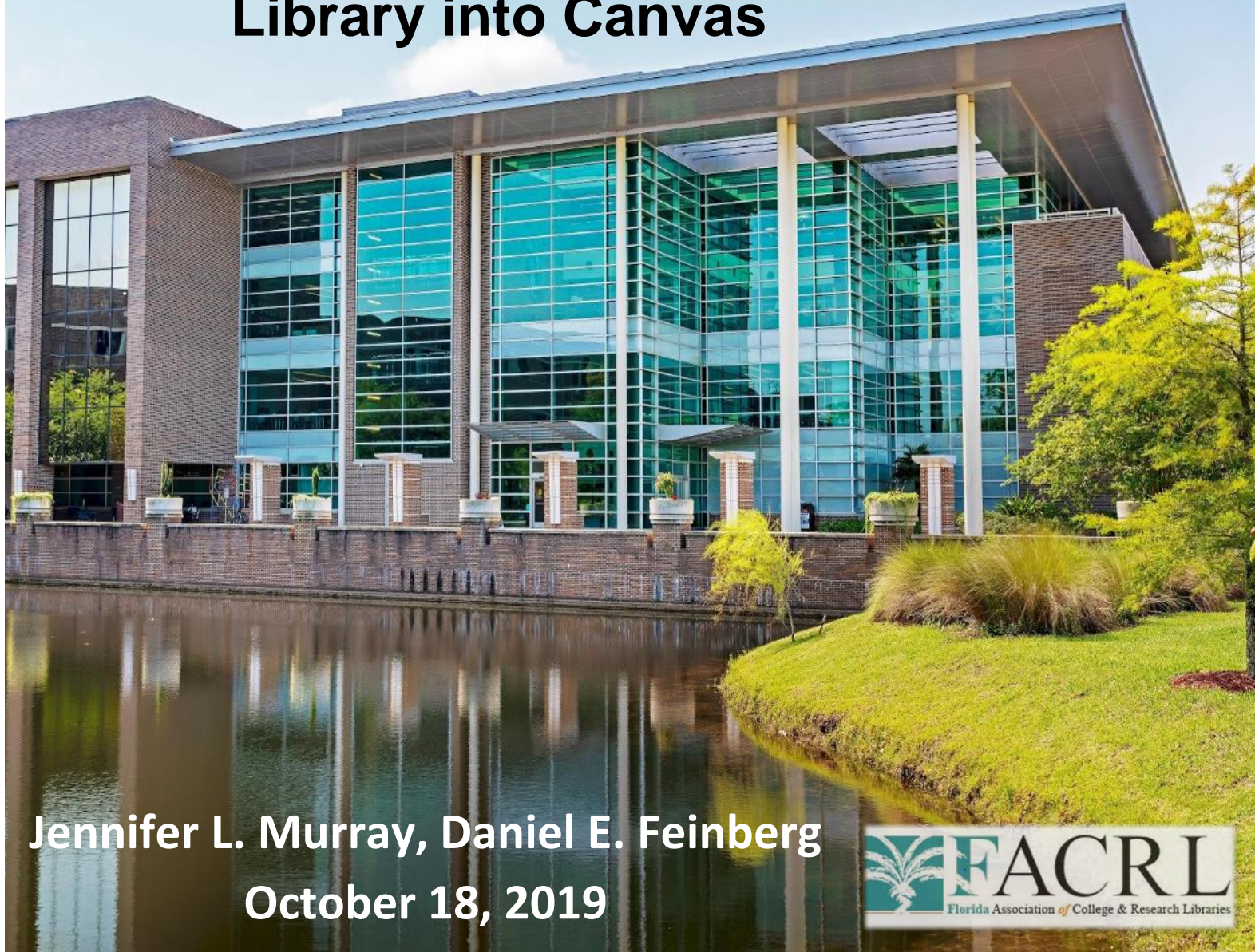
Murray, Jennifer and Feinberg, Daniel, "Collaboration and Integration: Embedding the Library into Canvas" (2019). *Library Faculty Presentations & Publications*. 77.

https://digitalcommons.unf.edu/library_facpub/77

This Presentation is brought to you for free and open access by the Thomas G. Carpenter Library at UNF Digital Commons. It has been accepted for inclusion in Library Faculty Presentations & Publications by an authorized administrator of UNF Digital Commons. For more information, please contact [Digital Projects](#).

© 10-18-2019 All Rights Reserved

Collaboration and Integration: Embedding the Library into Canvas



Jennifer L. Murray, Daniel E. Feinberg
October 18, 2019

History of Library and Canvas

- Canvas new to UNF 2017
- No real library presence in the LMS
- Library website forgotten
 - Reminding students of library URL
 - Transitioning in and out of Canvas to library
 - Complaints about yet another URL

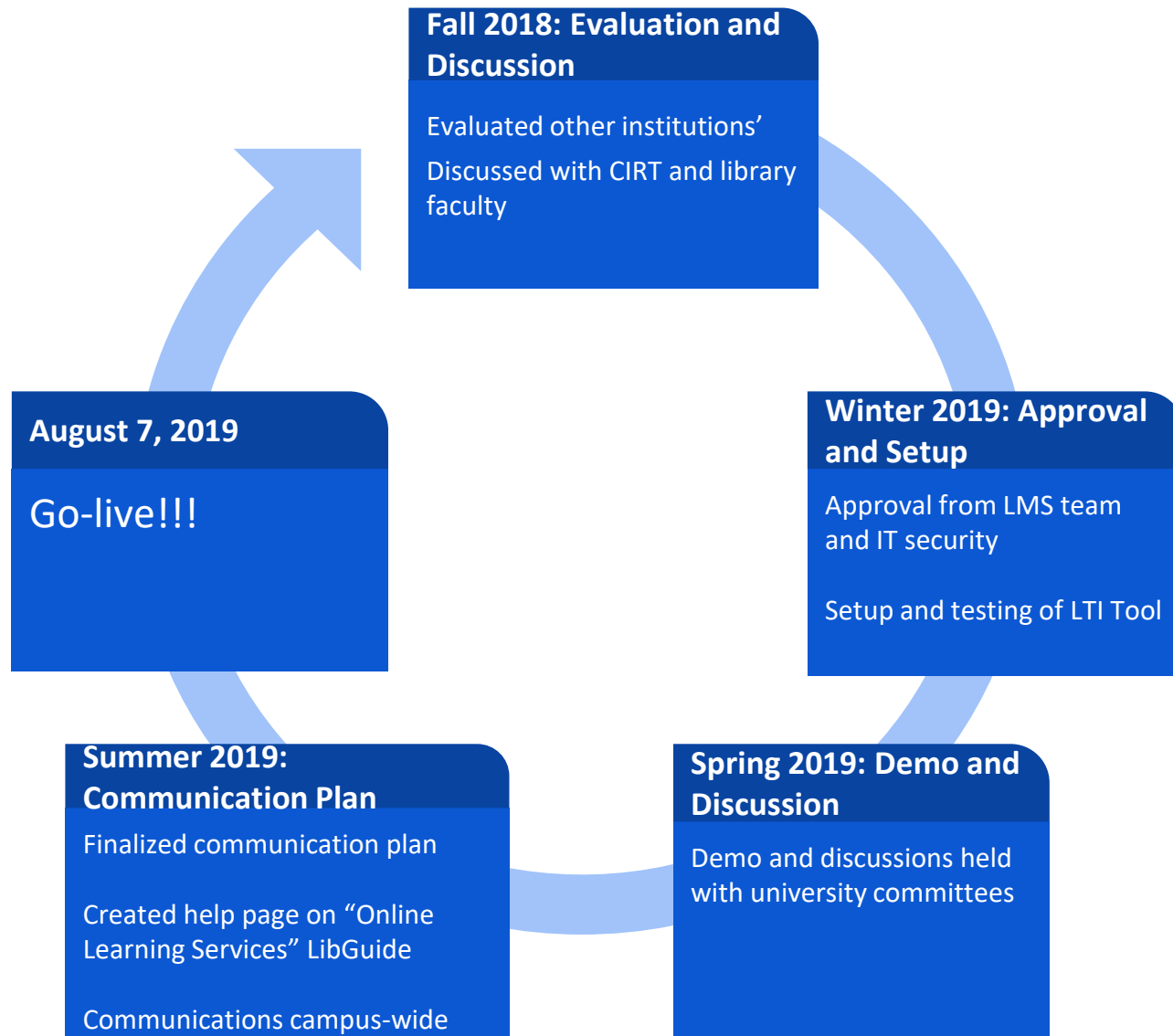
How Projected Originated

- Librarians realized there was a lack of awareness of online library resources
- Questions came up:
 - Professors asking why students did not know where resources are
 - Students did not know the library URL
 - Students expressed that it was easier to Google
 - Isn't there a seamless way to get to the library
- Library online presence needed more visibility
- OLL approached Director of TSS

Collaboration and Discussion Across UNF

- Options and timeline discussed with Center for Instruction and Research Technology (CIRT)
- Gathered feedback from librarians
- Discussions with teaching faculty:
 - Campus Technology Committee
 - Distance Learning Committee
- Many more conversations were had...

Project Timeline



Student Resources Guide in Canvas

CIRT.TOL-SUMMER2019 > CIRT.TOL-SUMMER2019

Home
Modules
Assignments
Announcements
Collaborations
Conferences
Discussions
Grades
People
Library Guide
Help

Welcome About the Library Getting Started Library of Congress Classification How to Research How to Cite Sources
How to Print/Copy/Scan How to Check Out Materials Campus Resources Library Technology Library Outreach and Events
Library Instruction Online Learning Tutoring in the Library

12 THOMAS G. CARPENTER LIBRARY

Hours
Closed
More Hours

Contact Us
Call Us (904) 620-2615
Text Us (904) 507-4122
Email Us ask@unf.libanswers.com

Navigation
Welcome! Use the tabs above or the links below to move between the pages of this guide.

- About the Library:** A general overview about the Thomas G. Carpenter Library
- Getting Started:** Helpful vocabulary and instructions on using the discovery service OneSearch
- Library of Congress Classification:** What are LOC call numbers, and what do they mean?
- How to Research:** Information on how to begin your research projects
- How to Cite Sources:** All you need to know about copyright compliance and citations

Student Outreach Librarian

Chat Online

Benefits & Challenges of Integration

Benefits

- Strong relationship with CIRT
- Streamline access to the library
- Increase awareness of library resources and services campus-wide
- Increase visibility of library online
- UNF Impact

Challenges

- Numerous stakeholders
- Getting buy-in from faculty
 - Some were resistant to the change
- Campus-wide awareness of integration
- Inability to gather usage statistics from Canvas

Next Steps

- Gather feedback from faculty, students and librarians
- Gather usage statistics from Canvas
 - What courses are using/not using LibGuide
- Explore other integration possibilities. For example, add library instruction into Canvas courses:
 - Create modules of tutorials and quizzes
 - Create online library minicourse
 - Embed librarian in a course
- Standardize and Redesign LibGuides

Lessons Learned

- Identify and involve stakeholders early on
- Communicate at the appropriate times
- Getting buy-in from teaching faculty is key
- Consider impact of LibGuide design
- Setup statistics as part of implementation

“Positioning the library at the heart of the virtual campus seems as important as positioning the library as the heart of the physical campus.” (Farkas 2015)

Farkas, M.G. (2015). Libraries in the learning management system. *ACRL Instruction Section: Tips and Trends*. Summer.

Questions?

Jennifer L. Murray, MLS

Director of Technical Services and Library Systems

jennifer.murray@unf.edu

Daniel E. Feinberg MLIS, MEd

Online Learning Librarian

daniel.feinberg@unf.edu