

1965

## Tampa Bay Regional Planning Council

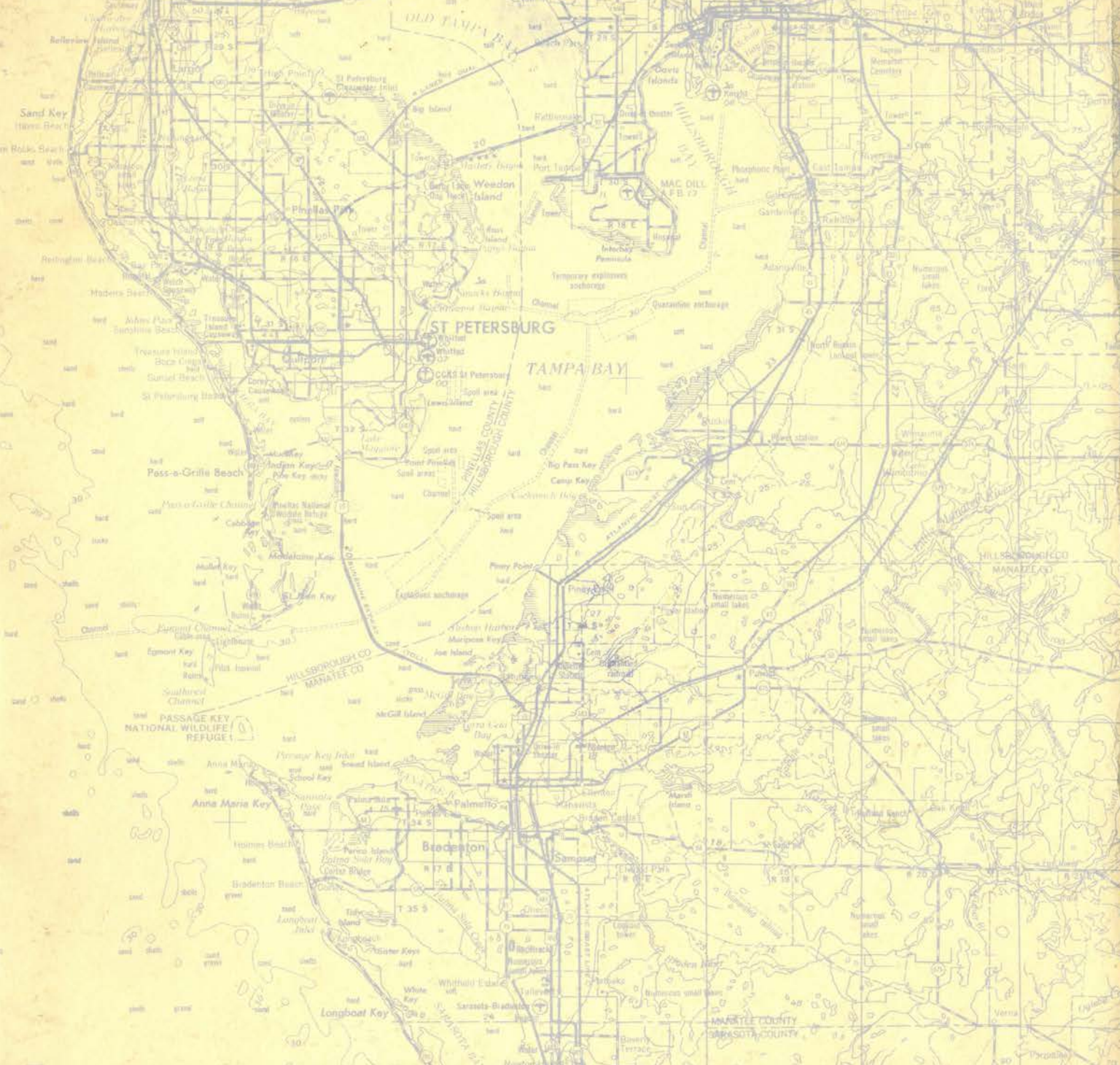
Tampa Bay Regional Planning Council

Follow this and additional works at: <https://digitalcommons.unf.edu/simonsflorida> Part of the [Urban, Community and Regional Planning Commons](#)

### Recommended Citation

Tampa Bay Regional Planning Council. 1965. George W. Simons, Jr. Planning Collection. University of North Florida, Thomas G. Carpenter Library Special Collections and Archives. UNF Digital Commons, <https://digitalcommons.unf.edu/simonsflorida/105/>

This Book is brought to you for free and open access by the George W. Simons, Jr. Publications and Printed Materials at UNF Digital Commons. It has been accepted for inclusion in City and Regional Planning -- Florida by an authorized administrator of UNF Digital Commons. For more information, please contact [Digital Projects](#).  
© 1965 All Rights Reserved




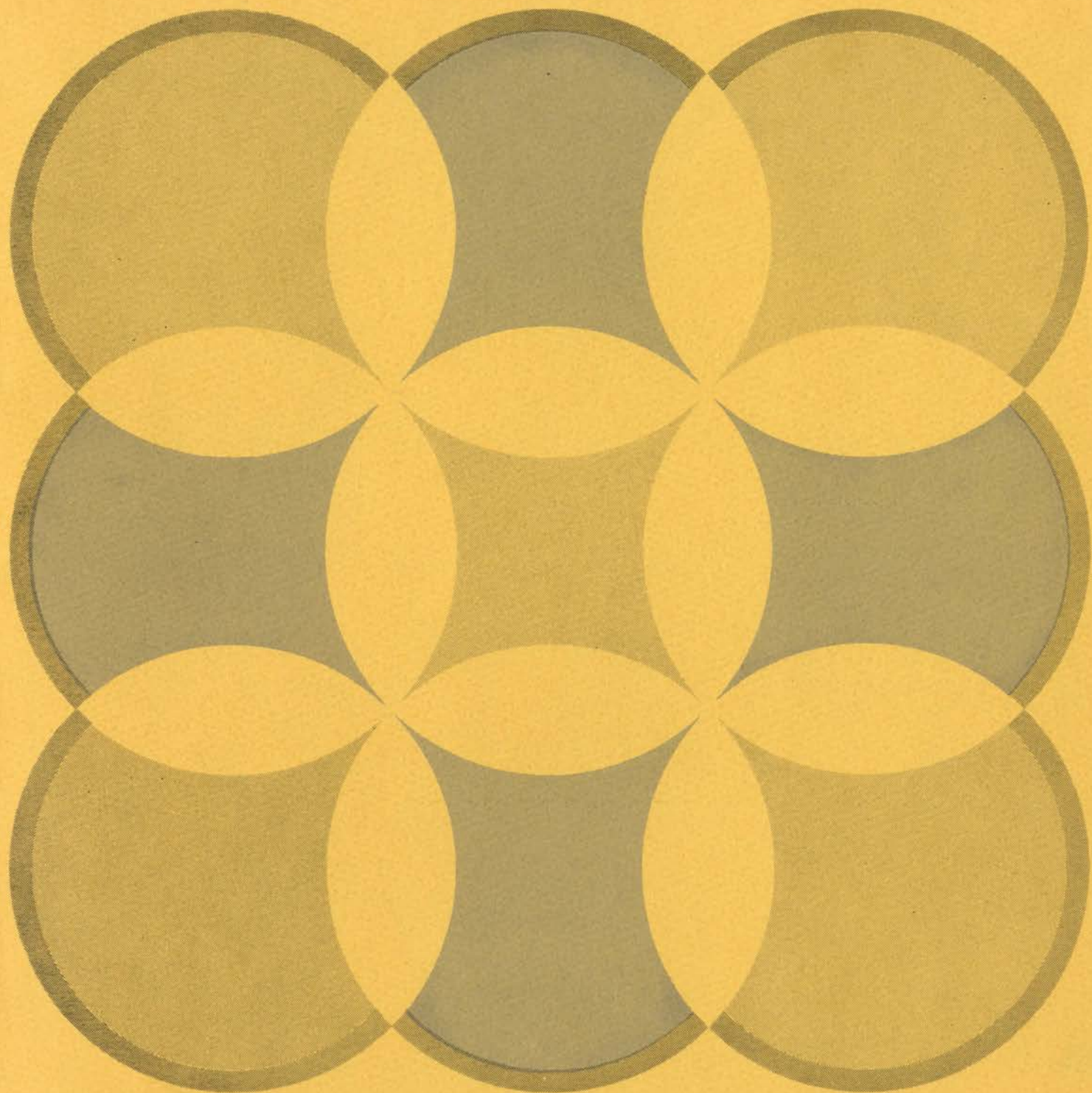
● Tampa Bay Regional Planning Council ●

# The Tampa Bay Region:

- Is an urban center located on the West Central Coast of Florida.
- Is one of the fastest growing regions in the nation: From 1950 to 1960, experienced a 94.3% increase in total population and a 107.9% increase in urban population.
- Is made up of four counties: Hillsborough, Manatee, Pinellas and Sarasota.
- Contains the major municipalities of: Tampa, Plant City, Bradenton, St. Petersburg, Clearwater, Pinellas Park, and Sarasota.
- Contains more than one-sixth of Florida's 1965 population of 5.8 million.
- Has an area of 2,521 square miles, which represents 4.7% of Florida's total land area.



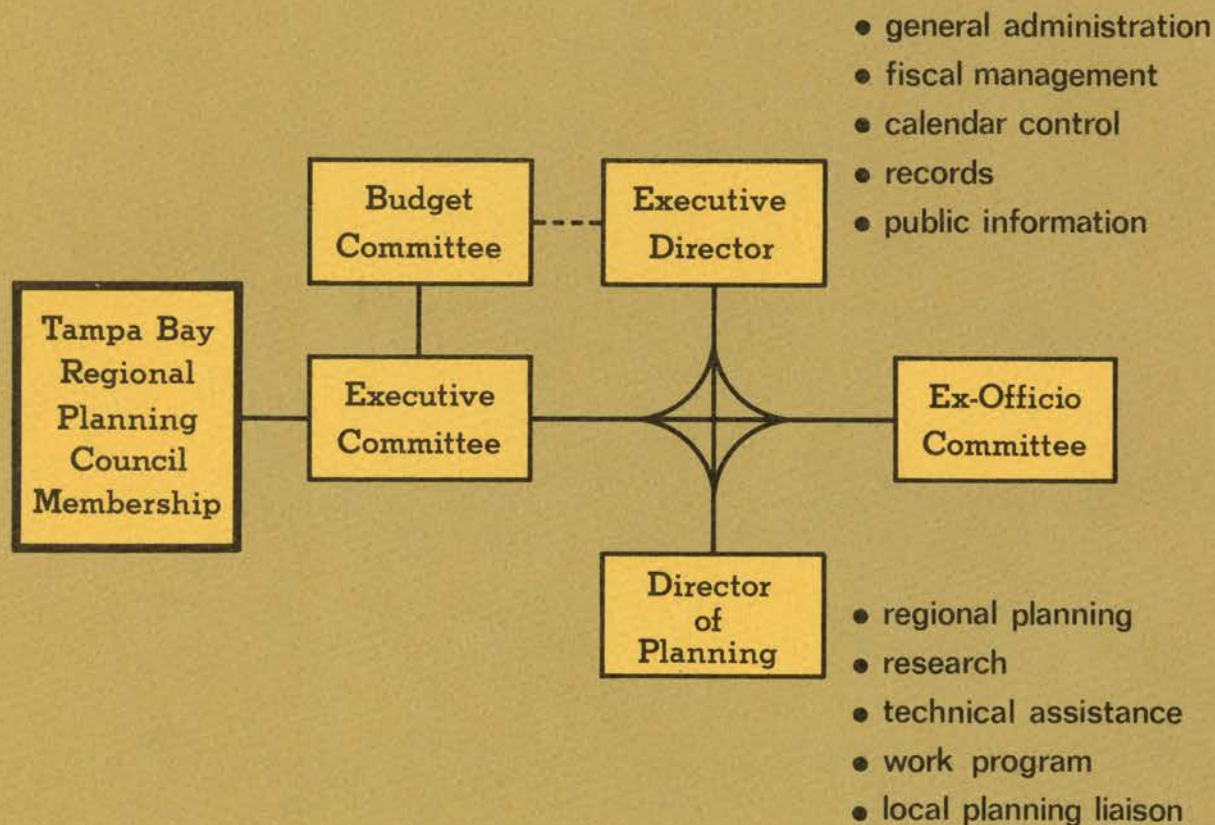
The Council 





### **The Tampa Bay Regional Planning Council:**

- Is a public planning agency supported by the county governments of Hillsborough, Manatee, Pinellas, and Sarasota; and the city governments of Bradenton, Clearwater, St. Petersburg, Sarasota, and Tampa.
- Has been in existence since February 16, 1962.
- Was organized under the provisions set forth in the Florida Statutes, Chapter 160, which states ". . . Any two or more counties and municipalities are hereby authorized and empowered to create and to establish a regional planning council. . ."
- Is the official planning agency for the four-county area, so designated by formal resolution of the Florida Development Commission, and recognized as such by the Department of Housing and Urban Development.
- Is charged with the following responsibilities:
  - to establish continuing, comprehensive, long-range planning programs for the entire four-county area.
  - to coordinate the combined efforts of all local governments within the four-county area.
  - to advise and assist all local planning agencies within the region.
  - to review local planning projects to see that they blend with the over-all plans and objectives of the entire four-county area.
  - to conduct research studies.
  - to formulate broad plans.



## Organizational Chart



## **Organization and Administration of TBRPC**

The Tampa Bay Regional Planning Council is organized and administered according to the provisions spelled out in the Florida Statutes, Chapter 160. All voting members of the Council are elected officials from their respective participating governmental units, each of which appoints two representatives. In addition, each participating governmental unit may designate to ex-officio membership their chief planning officer.

Representative members to the Council receive no compensation for their services. The terms of members may vary according to the term of office of the elected official.

Meetings of the Council are held on a quarterly basis. The members elect a Chairman, Vice Chairman and a Secretary-Treasurer annually.

There are three committees of particular importance:

THE EXECUTIVE COMMITTEE — consists of all officers of the TBRPC, plus one member appointed annually by the Chairman and the immediate past Chairman. The Chairman of this committee is at the same time Chairman of the TBRPC. This committee has the power of exercising all the functions of the Council between meetings.

THE ADVISORY BOARD — consists of designated members who are the chief planners for the participating governmental units, serving as a technical advisory group to the Council, but holding no voting power in Council proceedings.

THE BUDGET COMMITTEE — consists of the Chairman, Secretary-Treasurer, Executive Director, and two members appointed by the Chairman. This committee formulates the Council's annual budget.

The Council employs a professional planning staff which is responsible for carrying out a regional planning program. Participating cities and counties contribute to the financing of Council activities. In addition, the Council may acquire funds from Federal, State or private sources.



# Regional Planning



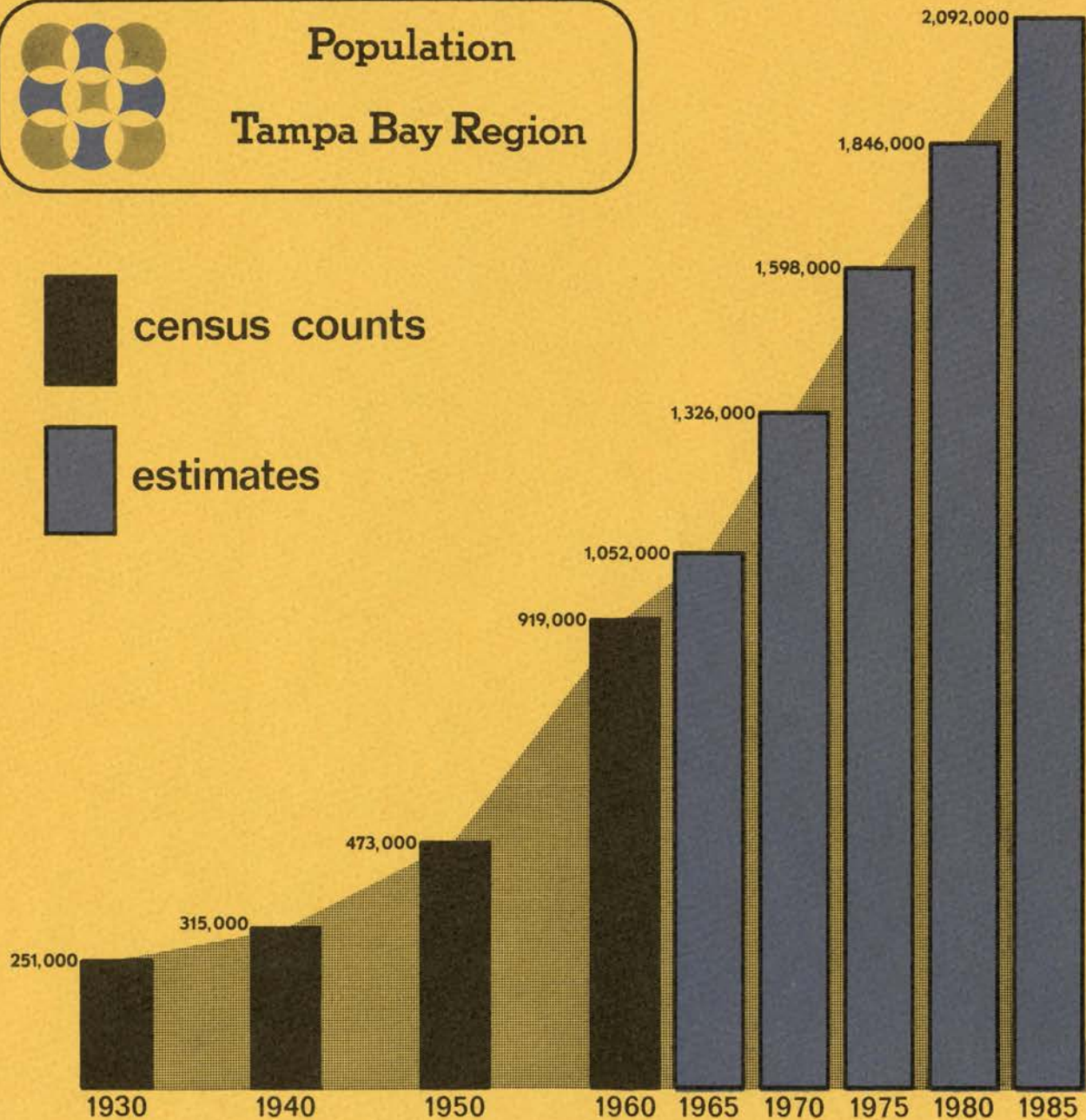
## Population Tampa Bay Region



census counts



estimates





### **The Need For Planning On A Regional Basis**

The primary cause of the need for planning on a regional basis can be attributed to the prominent trends of continuing growth in population and continuing sprawl of urban development to encompass clusters of communities. Increasingly larger numbers of people live and work in urban areas, such as the Tampa Bay Region.

Boundaries between political subdivisions are hardly discernible within an urban area; however, there exist many differences that may not be visually obvious. Each political subdivision is autonomous within its own territory as to tax base, method of financing, number and quality of public services and facilities, standards, objectives, and basic procedures for handling problems.

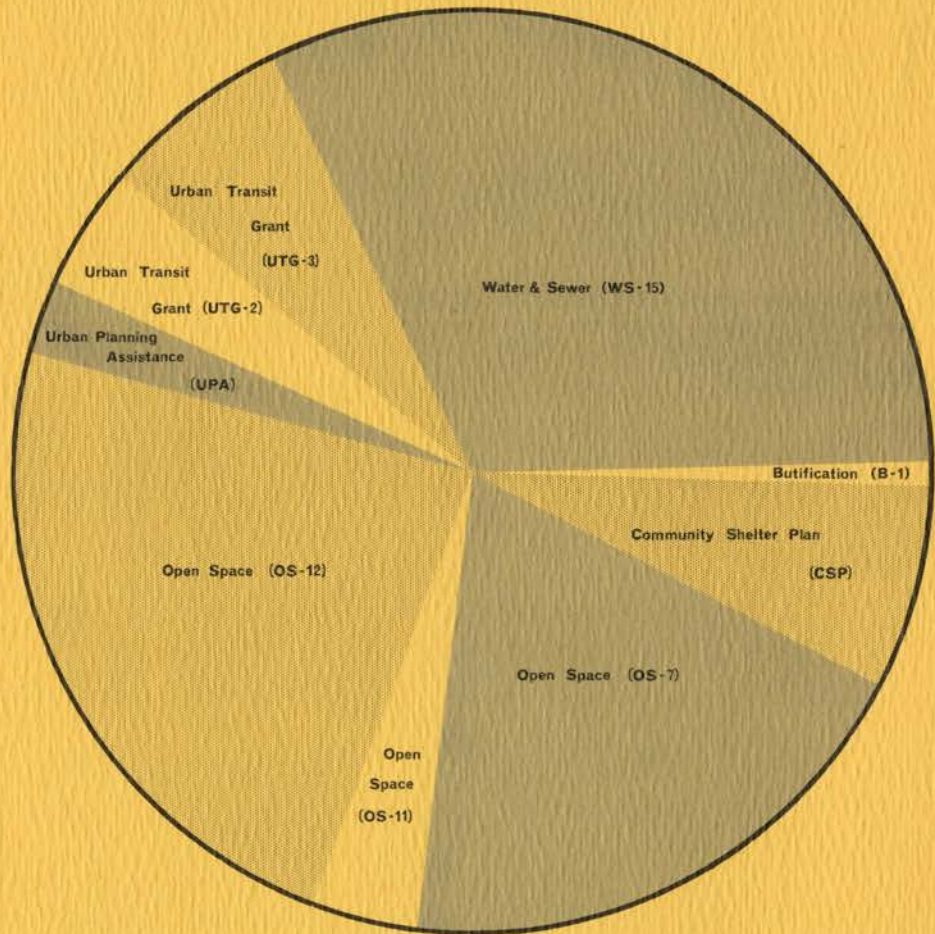
Despite the fact that jurisdictions within an urban area seem independent within their territories, they are essentially interdependent insofar as their economic and social welfare is concerned. What happens in one jurisdiction can be of serious concern to the others. Consequently, it is necessary that planning and the provision of public services and facilities be coordinated on an area-wide basis so as to insure the economic and social welfare of the urban area as a whole.

Today, regional planning is a must for large urban areas. Independent action by local governments without regard to regional effects can lead to chaos and confusion. Through regional planning, large urban areas can harmonize local plans and develop the most convenient and desirable surroundings attainable for the region as a unit.

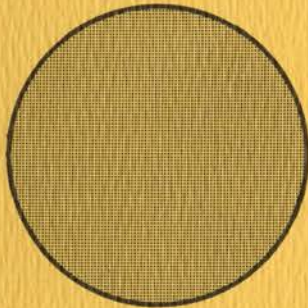
## Accomplishments



## Federal Grant Receipts



## TBRPC Expenditures



\$140,481.24

[ \$9.96 return per \$1.00 ]



Cost Benefit Ratio 1962 - 1967



### **Past Accomplishments of TBRPC**

In August 1961, Herman W. Goldner, then Mayor of St. Petersburg, first presented the idea of the need for a regional planning agency. TBRPC was formally established on February 16, 1962, with the earnest support of the Cities of Clearwater, St. Petersburg, Sarasota and Tampa. Later, the counties of Hillsborough, Pinellas, Manatee, and Sarasota, and the City of Bradenton, chose to affiliate themselves with the Council.

From 1962 to 1966, the Council performed primarily as a consultative body without benefit of its own professional planning staff. The Advisory Board acted on a part-time basis in place of a professional staff until the latter part of 1966, when the Council began assembling its own staff.


Although the Council lacked a full-time professional staff between 1962 and 1966, it was successful in serving and benefiting the Region in many different ways. For example, the Region has received almost \$1.4 million through TBRPC from various Federal grant programs for local planning activities and the provision of public facilities within the four-county area. In addition, the Council has:

- Obtained virtually unanimous agreement within the region upon the importance of extending I-75 and I-4 to provide a limited access highway linking the Tampa Bay and Miami Areas.
- Backed important legislative measures at both the State and National level oriented toward Conservation and Administration of National Resources, and invited experts in this field to meetings in order to discuss the role of natural resources in the Regional Economy.



- Adopted a Regional Program for Outdoor Recreation Facilities in the Tampa Bay Area, which represented the first attempt at attacking open-space problems at the Regional level.
- Stressed the significant role played throughout the Region by Colleges and Universities, and Health Facilities and Services, and the need for continued development of all types of Education and Health Facilities.
- Participated in the development of important projects related to local port and airport facilities.
- Cooperated with other organizations, both public and private, in basic research studies.

It is difficult to spell out all of the background work done by the Council in past years. However, the end result of these efforts has helped to earn the Council a strong position of leadership in the Region. The hiring of a professional planning staff has brought the Council to a new plateau of development that will guide it to an even greater position of area leadership.

**Work Program 1966 - 67** 



**COORDINATION OF 1970 CENSUS**

**COMMUNITY SHELTER PLAN\***

701 Program

**BASE MAP PREPARATION\***

**BASE INFORMATION MAPS\***

**PHYSICAL, SOCIAL &  
ECONOMIC FACTORS\***

**PUBLIC & PRIVATE AGENCIES**

**EXISTING BASES FOR PLANNING**

**REGIONAL PROBLEMS  
& OPPORTUNITIES  
WATER & SEWER  
INVENTORY & ANALYSIS\***

**STUDY DESIGN PREPARATION**

**PUBLIC INFORMATION PROGRAM**

**CONSULTANT SERVICES**

OCT NOV DEC JAN FEB MAR APR MAY JUN JUL AUG SEP

\*work done primarily by consultants



**Work Program - Fiscal Year 1966-1967**



## **TBRPC's Work Program, October 1966 - September 1967**

In addition to continuing to carry out plans inaugurated in past years and pursue goals established in past years, TBRPC will push forward into a new era of the development of its work program. A competent, experienced professional planning staff has been secured, and the Council has received an Urban Planning Assistance Grant from the Department of Housing and Urban Development to carry out a comprehensive planning program for this work year. A brief outline of projects included under the UPA Grant and the other elements of TBRPC's 1966-67 Work Program follows:

1. UPA Fla. P-45 - TBRPC applied for and had approved an Urban Planning Assistance Grant made available under Section 701 of the Housing Act of 1954, as amended. A review of the projects included under this grant follows:
  - A. Base Map Preparation — The effective development of TBRPC's planning program necessitates the use of up-to-date regional maps of appropriate scale. These maps will show all significant natural features, political boundaries, transportation systems and facilities, and filled areas within the Region.
  - B. Base Information Maps — To determine and analyze physical, economic, social and political factors within the Region, it is necessary that TBRPC have a series of generalized base information maps showing the location of such things as political subdivisions, major water areas, soil and geologic conditions, patterns of urbanization, water and sewer systems, and recreation areas.
  - C. Analysis of Development Factors — It is essential that the development factors within the Region be identified and analyzed if TBRPC is to have an adequate planning program. The development factors to be studied are as follows:
    1. Physical, Social and Economic Factors
    2. Public and Private Agencies
    3. Existing Bases for Planning
    4. Major Regional Problems and Opportunities
    5. Inventory and Analysis of Existing Water and Sewer Systems



- D. Initial Public Information Program — To fully inform public officials, public agencies, private organizations, and the general public about planning activities in the Region, TBRPC will initiate a program for establishing and maintaining lines of communications on a continuing basis. Part of this program includes a bi-monthly newsletter, the "Tampa Bay Planner."
  - E. Advisory Consultant Services — TBRPC has acquired the services of outstanding consultants in the field of regional planning to provide continuing advisory services to the Staff and the Council with respect to urban affairs and problems for a multi-jurisdiction region. Prime consultant is Carl Feiss. Associated with him is Robert N. Anderson, Jr.
- II. Coordination of 1970 Census - The 1970 Census of the Tampa-St. Petersburg SMSA will require a cooperative effort between the Bureau of Census and local planning agencies. TBRPC will participate as a coordinator between the Bureau of the Census and the local planning agencies. TBRPC's objective will provide the amount and quality of data needed for comprehensive planning programs and yield maximum results for local data users.
- III. Community Shelter Plan - The Tampa-St. Petersburg area has been selected by the Department of Defense as one of two areas within the State of Florida for the preparation of pilot studies in a nationwide CSP Program. TBRPC has received a grant from the Corps of Engineers to carry out a CSP study. The end result of this study will provide Hillsborough and Pinellas Counties with a course of action not only for fallout protection, but also in case of natural disasters.

**Work Program 1967-68** 







### **Future Work Program**

Planning within the four-county Tampa Bay Region has been well established for many years on an individual city and county basis. Our communities have made strong efforts to guide orderly growth within their respective political boundaries. However, despite these efforts, there are numerous common problems which cannot be effectively resolved by the independent action of one local government.

Problems of water and air pollution; highways and transportation facilities; industrial, commercial, and residential competition for space, parks, beach, and recreation areas; natural resources; and beach erosion, are of such scope and complexity that the only effective means of finding workable solutions is through joint action, on the regional level.

One of the most significant contributions from TBRPC's initial work program will be a specific identification of major areas of study necessary on a regional basis and a detailed description of a five-year planning work program. In addition, TBRPC's initial work program will present a detailed description of a short-range planning work program for a 1½-year work period so as to provide a proper planning framework for current development needs.



## **STAFF**

DON KING

Executive Director

NORMAN H. THOMPSON, JR.

Director of Planning

Dennis C. Stavros — Regional Planner II

Charles H. Howell — Regional Planner I

Phil Bonine — Draftsman

Betty Buckland — Secretary

Nada Damewood — Secretary

## MEMBERS

CHAIRMAN - George Ruppel

VICE CHAIRMAN - Robert Wright

SECRETARY-TREASURER - B. T. Arbuckle

BRADENTON: B. T. Arbuckle  
C. E. Silver

HILLSBOROUGH: John G. Glaros  
Ellsworth Simmons

CLEARWATER: H. Everett Hougen  
Cliff Stephens

MANATEE Richard P. Briggs  
Kenneth D. Dierks

ST. PETERSBURG: Herman W. Goldner  
Don Jones

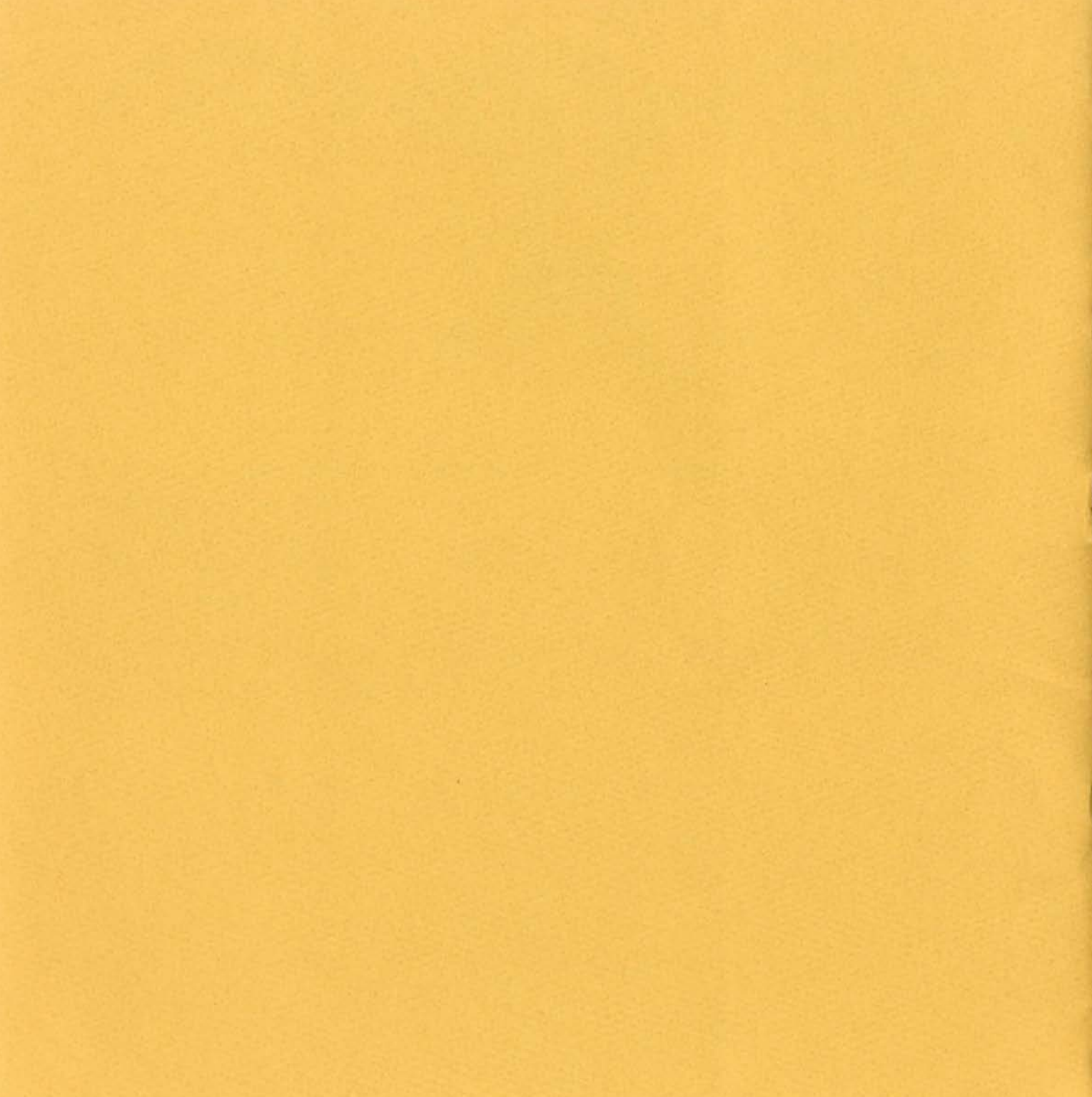
PINELLAS: George Ruppel  
Robert L. Weatherly

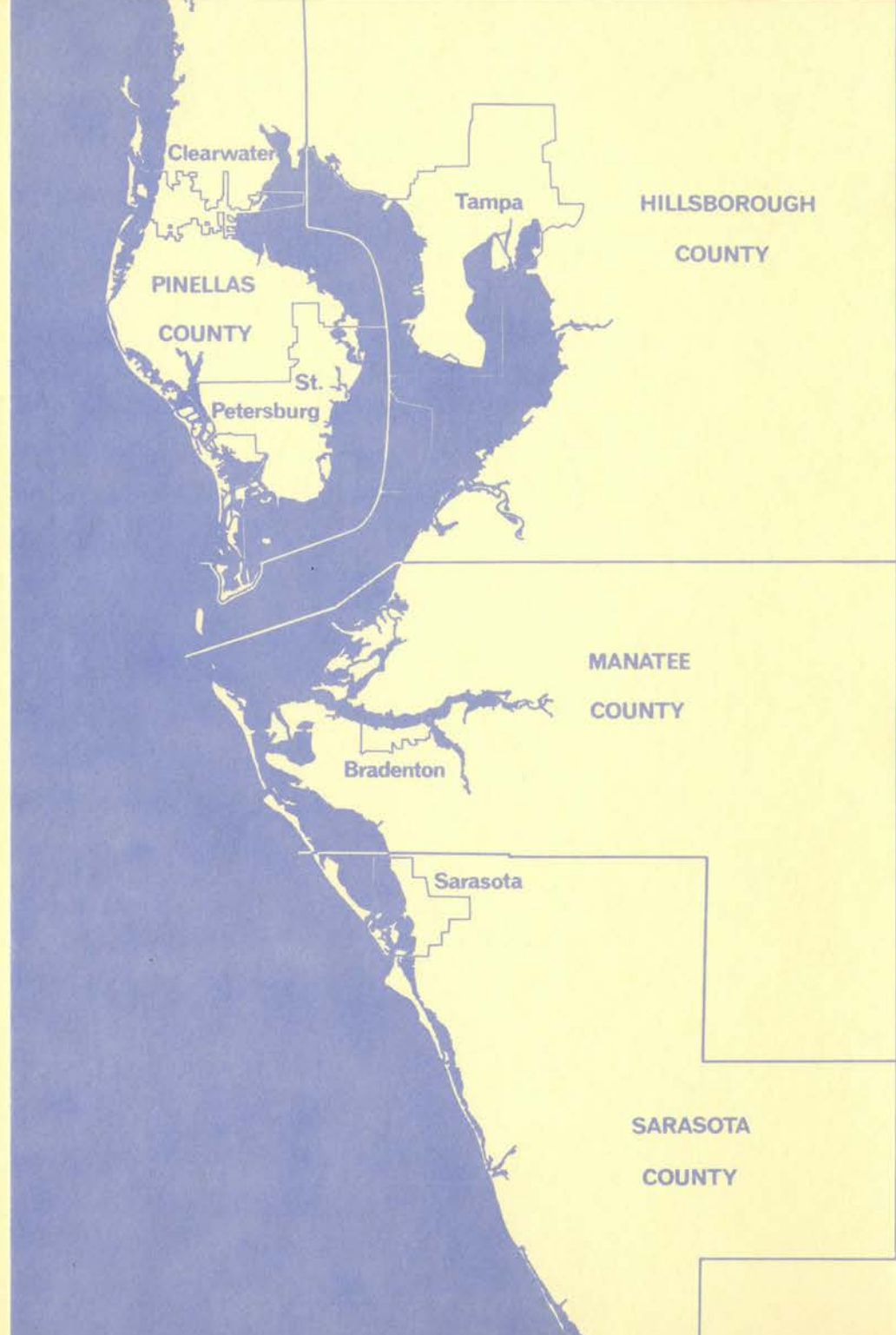
SARASOTA: David Cohen  
D. William Overton

SARASOTA William P. Carey  
Robert Wright

TAMPA: W. Douglas West  
Lloyd Copeland







Clearwater

Tampa

HILLSBOROUGH  
COUNTY

PINELLAS  
COUNTY

St.

Petersburg

MANATEE  
COUNTY

Bradenton

Sarasota

SARASOTA  
COUNTY



- The Council
- Regional Planning
- Accomplishments
- Work Program 1966 - 67
- Work Program 1967 - 68

Tampa Bay Regional Planning Council  
300 - 31st Street, North Suite 339  
St. Petersburg, Florida 33713