

Mapping Environmental Justice in Jacksonville

Project Summary

The project is a digitally interactive map of environmental justice in Jacksonville.

I have gathered research on lawsuits, protests, citizen complaints, cleanups, restoration projects, and more, all in the Jacksonville area.

Map components include: case study title, location, timeline, environmental justice pillar, type of issue, summary, and links to references.

The data is displayed on *BatchGeo* and can be accessed at <https://batchgeo.com/map/ea79b6e381fd1b28f23e92612a7e8d4a>.

Categories

- The environmental justice pillars are **distribution, participation, and recognition**.
- The types of issues are **health, spatial, economic**.
- Any case study that is currently affecting people in the community is **ongoing**, and any case study that is no longer putting people at risk is **historical**.

Outcomes

- Included are 19 case studies and the majority are in the Urban Core neighborhoods.
- 15 case studies are **negatively** affecting the community's health and 4 are **positively** affecting the community's health.
- I will continue to update this map and share it with local environmental organizations.
- I hope to use this map to **inspire other people and organizations** to use digital maps to analyze environmental justice cases and make this information accessible to the public.

Community Impact

My suggestions for the City of Jacksonville:

- ☐ Target the Urban Core neighborhoods
- ☐ Invest in storm resistance and drainage systems
- ☐ Reach out to community members and residents to participate in making environmental decisions

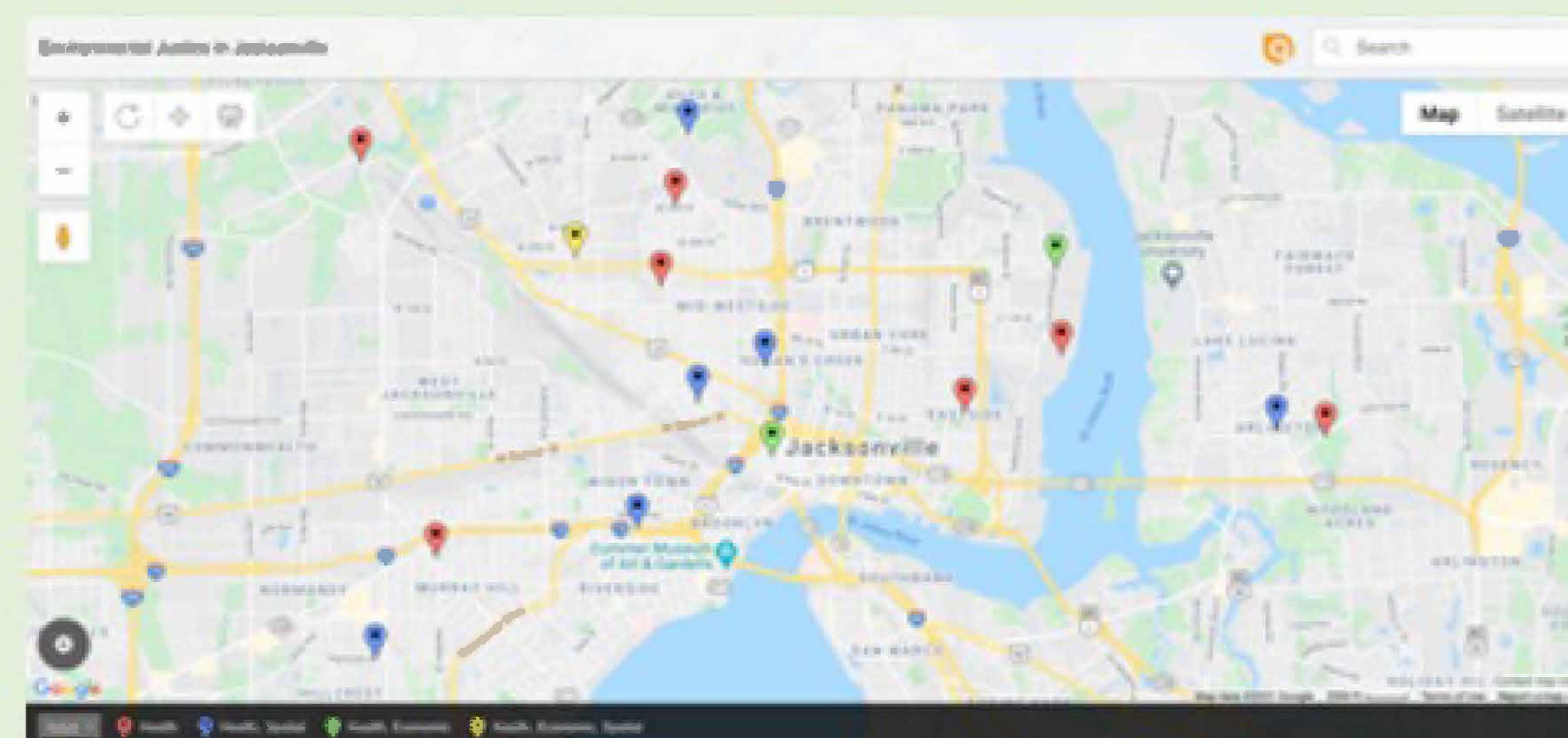
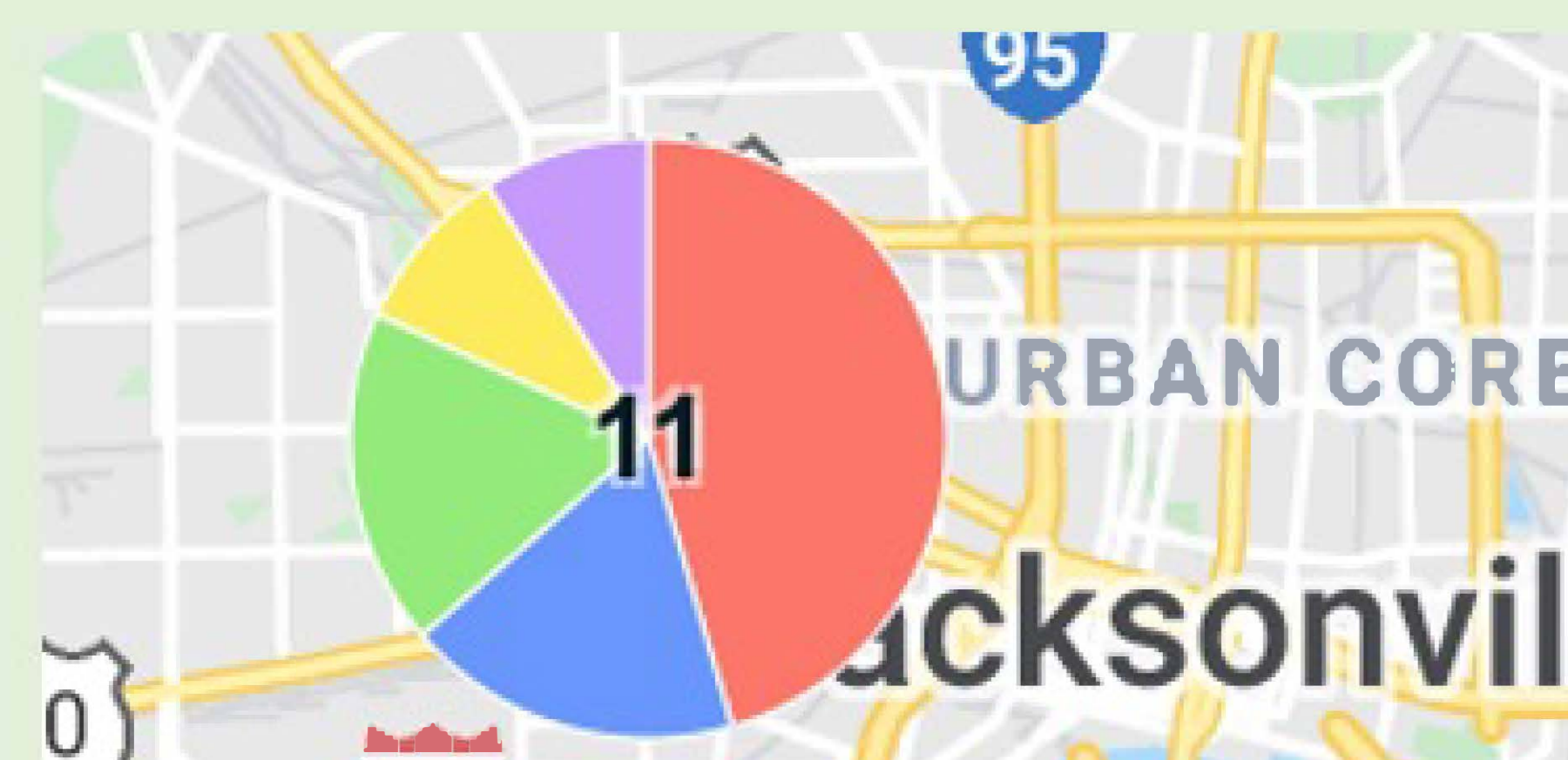
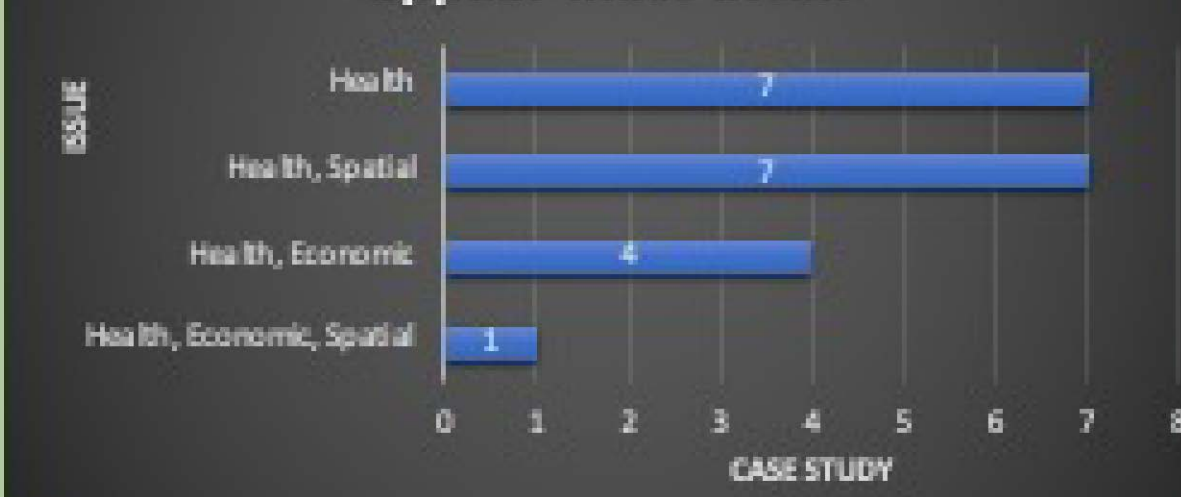
This map allows any person the ability to see what environmental justice issues still exist and who is being affected. It is also a resource that includes historical information, but project contributors can continuously update it and add special features, like pictures and audio files of interviews.

Graphs

Case Study Timelines



Issue: "Health" and "Health, Spatial" appear most often



JAXPORT

2831 Talleyrand Ave, Jacksonville, FL 32206

Timeline: Ongoing

Environmental Justice Pillar: Participation

Issue: Health, Economic

Summary: JAXPORT has plans to dredge the river from 40 to 47 feet. This location, nearby residential areas, is prone to flooding and is in need of many changes to improve the area's resiliency. Community members have high rates of asthma and other respiratory illnesses, so they are hesitant to have increased truck traffic involved in shipping. It is unclear whether the local community has been included in the dialogue surrounding the project.

: <https://www.jacksonville.com/article/20100430/NEWS/801253141>

: <https://www.stjohnsriverkeeper.org/jaxport-avoids-dredging-debate/>

: <https://www.stjohnsriverkeeper.org/mitigation-now/>

: <https://projects.tampabay.com/projects/2017/investigations/jacksonville-never-drains-hurricane/>

Acknowledgements

I would like to thank Dr. Gellers for sharing this project idea with me and for allowing me to create the first environmental justice map of Jacksonville.